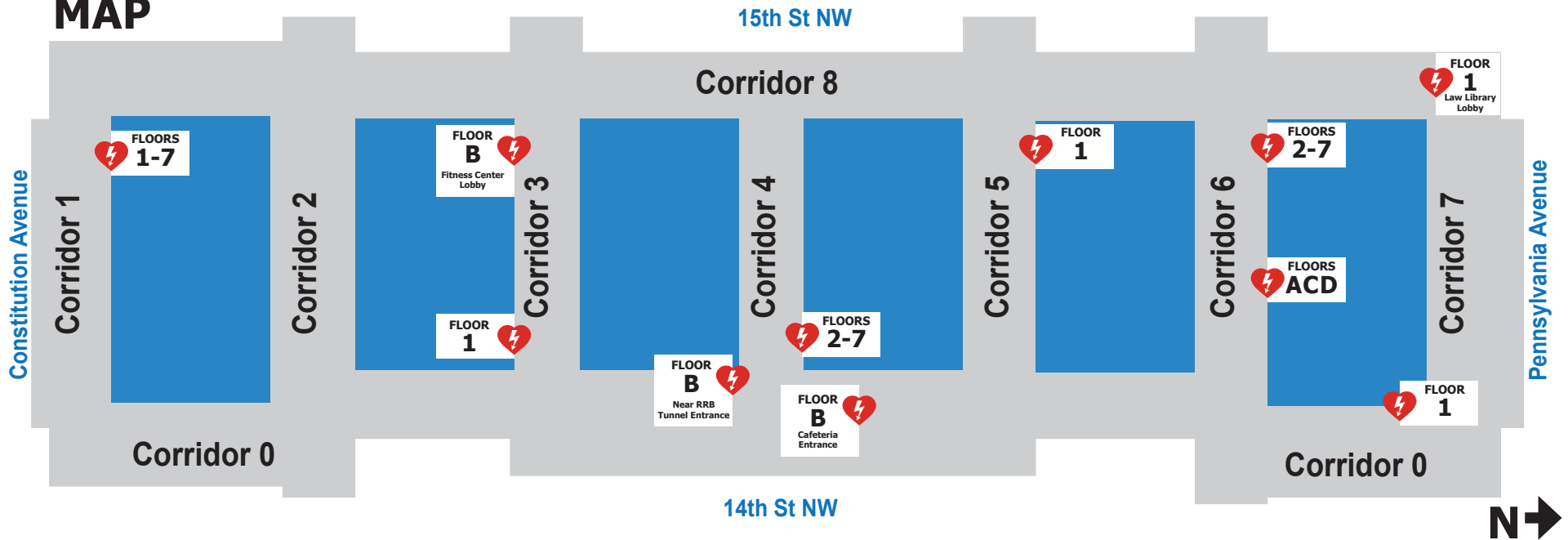


Automated External Defibrillator (AED)

MAP



FLOOR LOCATIONS

FLOORS	CORRIDOR	ADJACENT CORRIDOR	SPACE
A, C, D	6		Swing Space
B	0	4	RRB Tunnel Entry
B	0	5	Cafeteria Entry
B	3	8	Fitness Ctr. Lobby
1	0	7	
1	3	0	
1	5	8	
1	7	8	Law Library Lobby
1-7	1	8	
2-7	4	0	
2-7	6	8	

WHEN DO YOU NEED AN AED?



When a person is unconscious and has no pulse.

First, call OSY X2-2222 (202-482-2222).

Then, locate nearest AED unit and follow instructions provided.

Office of Facilities and Environmental Quality
OSBM-IO@doc.gov | 202-482-1340

Updated July 2024