



***EDA:
Results-driven
Performance***



***United States Department of Commerce
Economic Development Administration***

Fiscal Year 2019

Congressional Budget Request

February 12, 2018

PRIVILEGED

The information contained herein must not be disclosed outside the Bureau until made public by the President or by the Congress.

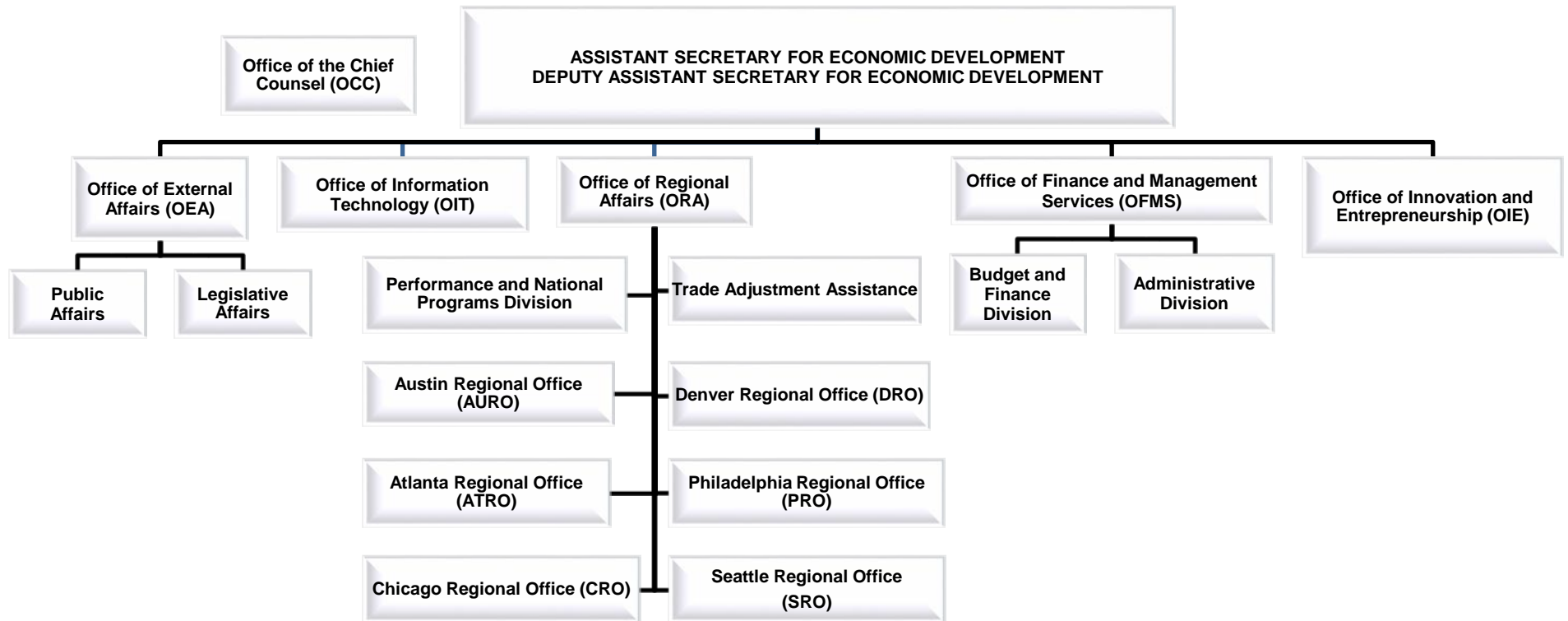
[THIS PAGE INTENTIONALLY LEFT BLANK]

**DEPARTMENT OF COMMERCE
ECONOMIC DEVELOPMENT ADMINISTRATION
Budget Estimates, Fiscal Year 2019
Congressional Submission
Table Of Contents**

<u>Exhibit Number</u>	<u>Exhibit</u>	<u>Page Number</u>
2	Organization Chart	EDA-3
3	Executive Summary	EDA-5
4A	Program Increases / Decreases / Terminations	EDA-7
5	Summary of Resource Requirements	EDA-9
6	Summary of Reimbursable Obligations	EDA-11
7	Summary of Financing	EDA-13
10	Program and Performance: Direct Obligations	EDA-15
12	Justification of Program and Performance (Public Works)	EDA-17
13	Program Change for 2019	EDA-19
10	Program and Performance: Direct Obligations	EDA-21
12	Justification of Program and Performance (Partnership Planning)	EDA-23
13	Program Change for 2019	EDA-25
10	Program and Performance: Direct Obligations	EDA-27
12	Justification of Program and Performance (Technical Assistance)	EDA-29
13	Program Change for 2019	EDA-31
10	Program and Performance: Direct Obligations	EDA-33
12	Justification of Program and Performance (Research and Evaluation)	EDA-35
13	Program Change for 2019	EDA-37
10	Program and Performance: Direct Obligations	EDA-39
12	Justification of Program and Performance (Trade Adjustment Assistance)	EDA-41
13	Program Change for 2019	EDA-43
10	Program and Performance: Direct Obligations	EDA-45
12	Justification of Program and Performance (Economic Adjustment Assistance)	EDA-47
13	Program Change for 2019	EDA-49
10	Program and Performance: Direct Obligations	EDA-51
12	Justification of Program and Performance (Assistance to Coal Communities)	EDA-53
13	Program Change for 2019	EDA-55
10	Program and Performance: Direct Obligations	EDA-57
12	Justification of Program and Performance (Innovative Technologies in Manufacturing Loan Guarantees)	EDA-59
13	Program Change for 2019	EDA-61

<u>Exhibit Number</u>	<u>Exhibit</u>	<u>Page Number</u>
10	Program and Performance: Direct Obligations	EDA-63
12	Justification of Program and Performance (Regional Innovation)	EDA-65
13	Program Change for 2019	EDA-67
16	Summary of Requirements by Object Class	EDA-69
32	Justification Of Proposed Language Changes	EDA-71
33	Appropriation Language And Code Citations: Program Funds	EDA-73
5	Summary of Resource Requirements: Direct Obligations	EDA-75
6	Summary of Reimbursable Obligations	EDA-77
7	Summary of Financing	EDA-79
8	Adjustments-to-Base	EDA-81
10	Program and Performance: Direct Obligations	EDA-83
11	Program and Performance: Reimbursable Obligations	EDA-85
12	Justification of Program and Performance (by Subactivity)	EDA-87
13	Program Change for 2019	EDA-91
14	Program Change Personnel Detail	EDA-95
15	Program Change Detail by Object Class	EDA-97
16	Summary of Requirements by Object Class	EDA-99
32	Justification of Proposed Language Changes	EDA-101
33	Appropriations Language and Code Citation	EDA-103
35	Periodicals, Pamphlets, and Audiovisual Services	EDA-105
36	Average Grade and Salaries	EDA-107
	Annual Performance Plan and Report Backup	EDA-109

Department of Commerce
Economic Development Administration
ORGANIZATION CHART



[THIS PAGE INTENTIONALLY LEFT BLANK]

**Department of Commerce
Economic Development Administration
Budget Estimates, Fiscal Year 2019**

Executive Summary

The Administration's 2019 Budget prioritizes rebuilding the military and making critical investments in the Nation's security. It also identifies the savings and efficiencies needed to keep the Nation on a responsible fiscal path. The Administration has made the necessary tradeoffs and choices inherent in pursuing these goals. This means changing the role and size of the Federal Government and prioritizing the programs that provide a good return for the taxpayer, as well as those that serve the most critical functions, while consolidating or eliminating duplicative, ineffective or less critical programs. Many difficult decisions were necessary to reach the funding level provided in this budget, and the elimination of the Economic Development Administration (EDA) is one of them.

In support of these goals, the EDA FY 2019 budget requests program decreases to provide offsets to rebuild the military and making critical investments in the Nation's security. This budget requests \$14.9 million to cover the costs associated with closing down the agency. In light of this proposal to close down EDA, the Administration is also including in the general provisions for the Department of Commerce, specific language to allow for the defederalization of its Revolving Loan Fund grants. This language is necessary for the orderly close down of EDA's operations. Without the authority, EDA or any successor operating unit within the Department, would have to administer and monitor these grants in perpetuity because the federal interest in this type of grant does not end.

Since EDA's inception 52 years ago, EDA has led the federal economic development agenda by promoting innovation and competitiveness, preparing American regions for growth and success in the worldwide economy. EDA is proud of the investments it has made in economically distressed regions, based on their locally-driven strategies and needs, and the outcomes of those investments which spurred local innovation and entrepreneurship creating and saving jobs and leveraging private investments.

[THIS PAGE INTENTIONALLY LEFT BLANK]

**Department of Commerce
Economic Development Administration
FY 2019 PROGRAM INCREASES / DECREASES / TERMINATIONS**

(Dollar amounts in thousands)
(Largest to Smallest)

Increases

Page No in CJ	Appropriation	Budget Program	Activity/Subactivity	Positions	Budget Authority
	Not Applicable			0	0
Subtotal, Increases				0	0

Decreases

Page No in CJ	Appropriation	Budget Program	Activity/Subactivity	Positions	Budget Authority
EDA-75	Salaries and Expenses	Salaries and Expenses	Operations	-126	(21,321)
Subtotal, Decreases				-126	(21,321)

Terminations

Page No in CJ	Appropriation	Budget Program	Activity/Subactivity	Positions	Budget Authority
EDA-9	Economic Development Assistance Programs	Public Works		0	(95,130)
EDA-9	Economic Development Assistance Programs	Partnership Planning		0	(29,966)
EDA-9	Economic Development Assistance Programs	Technical Assistance		0	(8,562)
EDA-9	Economic Development Assistance Programs	Research and Evaluation		0	(1,427)
EDA-9	Economic Development Assistance Programs	Trade Adjustment Assistance		0	(12,367)
EDA-9	Economic Development Assistance Programs	Economic Adjustment Assistance		0	(33,295)
EDA-9	Economic Development Assistance Programs	Assistance to Coal Communities		0	(28,539)
EDA-9	Economic Development Assistance Programs	Regional Innovation		0	(16,172)
Subtotal, Terminations				0	(225,458)

[THIS PAGE INTENTIONALLY LEFT BLANK]

**Department of Commerce
Economic Development Administration
Economic Development Assistance Programs
SUMMARY OF RESOURCE REQUIREMENTS**

(Dollar amounts in thousands)

	<u>Positions</u>	<u>FTE</u>	<u>Budget Authority</u>	<u>Direct Obligations</u>
Appropriation Available, 2018	0	0	225,458	0
2019 Adjustments to base:				
<i>Plus: Restoration of recoveries/unobligated balances used to offset 20CY appropriation/non-recurring</i>			0	
<i>Plus: Inflationary/Adjustments to base</i>			0	0
<i>Less: Estimated recoveries, 2019</i>			(32,000)	
2019 Base	0	0	193,458	0
<i>Plus: 2019 Program changes</i>	0	0	(193,458)	0
2019 Estimate	0	0	0	0

Comparison by activity / subactivity with totals by activity		2017		2018		2019		2019		Increase/Decrease	
		Actual		Annualized CR		Base		Estimate		over 2019 Base	
		Personnel	Amount	Personnel	Amount	Personnel	Amount	Personnel	Amount	Personnel	Amount
EDA - 17 Public Works	Pos./BA	0	100,000	0	95,130	0	95,130	0	0	0	(95,130)
	FTE/Obl.	0	121,312	0	120,000	0	120,000	0	0	0	(120,000)
EDA - 23 Partnership Planning	Pos./BA	0	31,500	0	29,966	0	29,966	0	0	0	(29,966)
	FTE/Obl.	0	32,161	0	33,000	0	33,000	0	0	0	(33,000)
EDA - 29 Technical Assistance	Pos./BA	0	9,000	0	8,562	0	8,562	0	0	0	(8,562)
	FTE/Obl.	0	10,978	0	10,000	0	10,000	0	0	0	(10,000)
EDA - 35 Research and Evaluation	Pos./BA	0	1,500	0	1,427	0	1,427	0	0	0	(1,427)
	FTE/Obl.	0	2,592	0	1,400	0	1,400	0	0	0	(1,400)
EDA - 41 Trade Adjustment Assistance	Pos./BA	0	13,000	0	12,367	0	12,367	0	0	0	(12,367)
	FTE/Obl.	0	13,309	0	13,000	0	13,000	0	0	0	(13,000)

Comparison by activity / subactivity with totals by activity			2017		2018		2019		2019		Increase/Decrease	
			Actual		Annualized CR		Base		Estimate		over 2019 Base	
			Personnel	Amount	Personnel	Amount	Personnel	Amount	Personnel	Amount	Personnel	Amount
EDA - 47 Economic Adjustment Assistance	Pos./BA	0	35,000	0	33,295	0	33,295	0	0	0	(33,295)	
	FTE/Obl.	0	42,435	0	44,000	0	44,000	0	0	0	(44,000)	
EDA - 53 Assistance to Coal Communities	Pos./BA	0	30,000	0	28,539	0	28,539	0	0	0	(28,539)	
	FTE/Obl.	0	30,657	0	30,000	0	30,000	0	0	0	(30,000)	
EDA - 59 Innovative Technologies in Manufacturing Loan Guarantees	Pos./BA	0	0	0	0	0	0	0	0	0	0	
	FTE/Obl.	0	0	0	0	0	0	0	0	0	0	
EDA - 65 Regional Innovation	Pos./BA	0	17,000	0	16,172	0	16,172	0	0	0	(16,172)	
	FTE/Obl.	0	32,100	0	17,000	0	17,000	0	0	0	(17,000)	
Supplemental Appropriations Act, 2008	Pos./BA	0	0	0	0	0	0	0	0	0	0	
	FTE/Obl.	0	487	0	0	0	0	0	0	0	0	
Consolidated Security, Disaster Assistance, and Continuing Appropriations Act, 2008	Pos./BA	0	0	0	0	0	0	0	0	0	0	
	FTE/Obl.	0	1,712	0	0	0	0	0	0	0	0	
Other Prior Year Category B Disaster Supplementals	Pos./BA	0	0	0	0	0	0	0	0	0	0	
	FTE/Obl.	0	5,637	0	0	0	0	0	0	0	0	
Total	Pos./BA	0	237,000	0	225,458	0	225,458	0	0	0	(225,458)	
	FTE/Obl.	0	293,380	0	268,400	0	268,400	0	0	0	(268,400)	
Adjustments for												
Recoveries			(40,582)		(36,433)		(36,433)		(32,000)		4,433	
Unobligated balance, start of year			(70,894)		(43,950)		(43,950)		(27,441)		16,509	
Unobligated balance transferred			1,146		0		0		0		0	
Unobligated balance, end of year			43,950		27,441		27,441		19,441		(8,000)	
Rescission			10,000		10,000		10,000		40,000		30,000	
Financing from transfers:												
Transfer from other accounts (-)			0		0		0		0		0	
Transfer to other accounts (+)			0		0		0		0		0	
Appropriation			237,000		225,458		225,458		0		(225,458)	

**Department of Commerce
Economic Development Administration
Economic Development Assistance Programs
SUMMARY OF REIMBURSABLE OBLIGATIONS**

(Dollar amounts in thousands)

Comparison by activity		2017		2018		2019		2019		Increase/Decrease	
		Actual		Annualized CR		Base		Estimate		from 2019 Base	
		Personnel	Amount	Personnel	Amount	Personnel	Amount	Personnel	Amount	Personnel	Amount
Public Works	Pos./BA	0	0	0	0	0	0	0	0	0	0
	FTE/Obl.	0	0	0	0	0	0	0	0	0	0
Partnership Planning	Pos./BA	0	0	0	0	0	0	0	0	0	0
	FTE/Obl.	0	0	0	0	0	0	0	0	0	0
Technical Assistance	Pos./BA	0	0	0	0	0	0	0	0	0	0
	FTE/Obl.	0	0	0	0	0	0	0	0	0	0
Research & Evaluation	Pos./BA	0	0	0	0	0	0	0	0	0	0
	FTE/Obl.	0	0	0	0	0	0	0	0	0	0
Trade Adjustment Assistance	Pos./BA	0	0	0	0	0	0	0	0	0	0
	FTE/Obl.	0	0	0	0	0	0	0	0	0	0
Economic Adjustment Assistance	Pos./BA	0	0	0	0	0	0	0	0	0	0
	FTE/Obl.	0	0	0	0	0	0	0	0	0	0
Assistance to Coal Communities	Pos./BA	0	0	0	0	0	0	0	0	0	0
	FTE/Obl.	0	0	0	0	0	0	0	0	0	0
Innovative Technologies in Manufacturing Loan Guarantees	Pos./BA	0	0	0	0	0	0	0	0	0	0
	FTE/Obl.	0	0	0	0	0	0	0	0	0	0
Regional Innovation	Pos./BA	0	0	0	0	0	0	0	0	0	0
	FTE/Obl.	0	0	0	0	0	0	0	0	0	0
Disaster Recovery Assistance (Category B)	Pos./BA	0	0	0	0	0	0	0	0	0	0
	FTE/Obl.	0	0	0	0	0	0	0	0	0	0
Total	Pos./BA	0	0	0	0	0	0	0	0	0	0
	FTE/Obl.	0	0	0	0	0	0	0	0	0	0

[THIS PAGE INTENTIONALLY LEFT BLANK]

**Department of Commerce
Economic Development Administration
Economic Development Assistance Programs**

SUMMARY OF FINANCING

(Dollar amounts in thousands)

	2017 Actual	2018 Annualized CR	2019 Base	2019 Estimate	Increase/Decrease from 2019 Base
Total Obligations	293,380	268,400	268,400	0	(268,400)
Offsetting collections from:					
Federal funds	0	0	0	0	0
Trust funds	0	0	0	0	0
Non-Federal sources	0	0	0	0	0
Recoveries	(40,582)	(36,433)	(36,433)	(32,000)	4,433
Unobligated balance, start of year	(70,894)	(43,950)	(43,950)	(27,441)	16,509
Unobligated balance, transferred	1,146	0	0	0	0
Unobligated balance, end of year	43,950	27,441	27,441	19,441	(8,000)
Rescission	10,000	10,000	10,000	40,000	30,000
Budget Authority	237,000	225,458	225,458	0	(225,458)
Financing:					
Transfer from other accounts (-)	0	0	0	0	0
Transfer to other accounts (+)	0	0	0	0	0
Appropriation	237,000	225,458	225,458	0	(225,458)

[THIS PAGE INTENTIONALLY LEFT BLANK]

**Department of Commerce
Economic Development Administration
PROGRAM AND PERFORMANCE: DIRECT OBLIGATIONS**

(Dollar amounts in thousands)

Activity: Economic Development Assistance Programs
Subactivity: Public Works

Line Item		2017		2018		2019		2019		Increase/Decrease	
		Actual		Annualized CR		Base		Estimate		from 2019 Base	
		Personnel	Amount	Personnel	Amount	Personnel	Amount	Personnel	Amount	Personnel	Amount
Grants	Pos./BA	0	100,000	0	95,130	0	95,130	0	0	0	-95,130
	FTE/Obl	0	121,312	0	120,000	0	120,000	0	0	0	-120,000
Total	Pos./BA	0	100,000	0	95,130	0	95,130	0	0	0	-95,130
	FTE/Obl	0	121,312	0	120,000	0	120,000	0	0	0	-120,000

[THIS PAGE INTENTIONALLY LEFT BLANK]

**Department of Commerce
Economic Development Administration
Economic Development Assistance Programs
JUSTIFICATION OF PROGRAM AND PERFORMANCE**

Activity: Economic Development Assistance Programs
Subactivity: Public Works

Goal Statement

The Administration is not requesting funding for its grant programs including the Public Works program.

Base Program

Through the Public Works Program, EDA made strategic co-investments to help communities build or expand access to the infrastructure assets that are the building blocks of an economy. These assets supported the growth and economic development of distressed regions. The EDA's Public Works Program invested in traditional infrastructure through this program including water and sewer system improvements, industrial parks, business incubator facilities, expansion of port and harbor facilities, skill-training facilities, and the redevelopment of brownfields. In addition, EDA provided investments to help facilitate the transition of distressed communities to become competitive in the worldwide economy. This was accomplished through the development of key public infrastructure such as technology-based facilities; research and development commercialization centers; facilities for workforce development; wet labs; multi-tenant manufacturing facilities; research, business and science parks with fiber optic cable; and telecommunications infrastructure and development facilities.

The program's authorizing statute is the Public Works and Economic Development Act (PWEDA) of 1965, as amended (42 U.S.C. § 3121 et seq.).

Statement of Operating Objectives

N/A

Explanation and Justification

No resources are being requested for this program.

[THIS PAGE INTENTIONALLY LEFT BLANK]

**Department of Commerce
Economic Development Administration
Economic Development Assistance Programs
PROGRAM CHANGES FOR 2019**

(Dollar amounts in thousands)

		2019 Base		2019 Estimate		Increase/Decrease from 2019 Base	
		Personnel	Amount	Personnel	Amount	Personnel	Amount
Public Works	Pos./BA	0	95,130	0	0	0	-95,130
	FTE/Obl.	0	120,000	0	0	0	-120,000

EDA is not requesting any resources for its Public Works Program.

[THIS PAGE INTENTIONALLY LEFT BLANK]

**Department of Commerce
Economic Development Administration
PROGRAM AND PERFORMANCE: DIRECT OBLIGATIONS**

(Dollar amounts in thousands)

Activity: Economic Development Assistance Programs
Subactivity: Partnership Planning

Line Item		2017		2018		2019		2019		Increase/Decrease	
		Actual		Annualized CR		Base		Estimate		from 2019 Base	
		Personnel	Amount	Personnel	Amount	Personnel	Amount	Personnel	Amount	Personnel	Amount
Grants	Pos./BA	0	31,500	0	29,966	0	29,966	0	0	0	-29,966
	FTE/Obl	0	32,161	0	33,000	0	33,000	0	0	0	-33,000
Total	Pos./BA	0	31,500	0	29,966	0	29,966	0	0	0	-29,966
	FTE/Obl	0	32,161	0	33,000	0	33,000	0	0	0	-33,000

[THIS PAGE INTENTIONALLY LEFT BLANK]

**Department of Commerce
Economic Development Administration
Economic Development Assistance Programs
JUSTIFICATION OF PROGRAM AND PERFORMANCE**

Activity: Economic Development Assistance Programs
Subactivity: Partnership Planning

Goal Statement

The Administration is not requesting funding for its grant programs including the Partnership Planning Program.

Base Program

The Partnership Planning Program supported planning projects that helped a community identify regional assets, maximize economic opportunities, and establish strategies for promoting the competitiveness of an entire region. EDA’s Partnership Planning Program provided the resources to help communities develop the bottom-up strategies that guide the identification and prioritization of future development decisions. EDA’s Partnership Planning Program helped support local organizations (Economic Development Districts (EDD), Indian Tribes, and other eligible entities) with their long-term planning efforts, outreach to communities, and development of Comprehensive Economic Development Strategies (CEDS).

The CEDS, which may continue to be utilized by communities after the closure of EDA, is designed to bring together public and private sector stakeholders in the creation of a regional economic roadmap to diversify and strengthen regional economies. The CEDS analyzes the regional economy and serves as a guide for establishing regional goals and objectives, develops and implements a regional plan of action, identifies investment priorities and funding sources, and assigns responsibilities for execution of the strategy. Public and private sector partnerships are critical to the implementation of the integrated elements of a CEDS. As a performance-based plan, the CEDS serves a critical role in a region’s efforts to defend against economic dislocations due to trade impacts, competition and other events that would result in the loss of jobs and private investment. The CEDS can be used as a valuable tool for other federal programs because it outlines a community’s regional strengths, weaknesses and plan for growth.

The program’s authorizing statute is the Public Works and Economic Development Act (PWEDA) of 1965, as amended (42 U.S.C. § 3121 et seq.).

Statement of Operating Objectives

N/A

Explanation and Justification

No resources are being requested for this program.

[THIS PAGE INTENTIONALLY LEFT BLANK]

**Department of Commerce
Economic Development Administration
Economic Development Assistance Programs
PROGRAM CHANGES FOR 2019**

(Dollar amounts in thousands)

		2019 Base		2019 Estimate		Increase/Decrease from 2019 Base	
		Personnel	Amount	Personnel	Amount	Personnel	Amount
Partnership Planning	Pos./BA	0	95,130	0	0	0	-95,130
	FTE/Obl.	0	120,000	0	0	0	-120,000

EDA is not requesting any resources for its Partnership Planning Program.

[THIS PAGE INTENTIONALLY LEFT BLANK]

**Department of Commerce
Economic Development Administration
PROGRAM AND PERFORMANCE: DIRECT OBLIGATIONS**

(Dollar amounts in thousands)

Activity: Economic Development Assistance Programs
Subactivity: Technical Assistance

Line Item		2017		2018		2019		2019		Increase/Decrease	
		Actual	Amount	Annualized CR	Amount	Base	Amount	Estimate	Amount	Personnel	Amount
Grants	Pos./BA	0	9,000	0	8,562	0	8,562	0	0	0	-8,562
	FTE/Obl	0	10,978	0	10,000	0	10,000	0	0	0	-10,000
Total	Pos./BA	0	9,000	0	8,562	0	8,562	0	0	0	-8,562
	FTE/Obl	0	10,978	0	10,000	0	10,000	0	0	0	-10,000

[THIS PAGE INTENTIONALLY LEFT BLANK]

**Department of Commerce
Economic Development Administration
Economic Development Assistance Programs
JUSTIFICATION OF PROGRAM AND PERFORMANCE**

Activity: Economic Development Assistance Programs
Subactivity: Technical Assistance

Goal Statement

The Administration is not requesting funding for its grant programs including the Technical Assistance Program.

BASE JUSTIFICATION

EDA oversaw three technical assistance sub-programs (University Center, Local, and National) that promoted economic development and alleviated unemployment, underemployment and out-migration in distressed regions.

The EDA-supported University Center (UC) sub-program was specifically designed to marshal the resources located within colleges and universities to support job creation and economic growth in regions experiencing economic distress. University Centers were required to devote the majority of their funding to respond to technical assistance requests originating from communities and organizations located in the economically distressed areas of their service regions.

The Local Technical Assistance (TA) sub-program was commonly used to analyze the feasibility of a potential economic development project, such as an industrial park or a high-technology business incubator. Economically distressed communities often have a pre-disposition towards the same type of industry that have historically been employers in the area, while market forces may be moving in another direction. Feasibility studies helped determine whether the market would support a particular activity or site.

The National Technical Assistance (TA) sub-program assisted economic development organizations to create new economic development tools that support efforts to attract private investment to regions and local communities. It sought to provide timely information on best practices in economic development critical to practitioners' efforts to alleviate economic distress and promote economic development. EDA also conducted demonstrations of promising economic development tools and techniques and disseminated the results to state and local organizations as well as urban, rural, and Native American communities. This program identified and funded the collection and dissemination of new knowledge, analysis, and technical information to help communities to assess their economic development opportunities.

The National TA sub-program also supported the dissemination and implementation of research and information to economic development policymakers and practitioners.

The program's authorizing statute is the Public Works and Economic Development Act (PWEDA) of 1965, as amended (42 U.S.C. § 3121 et seq.).

Statement of Operating Objectives

N/A

Explanation and Justification

No resources are being requested for this program.

**Department of Commerce
Economic Development Administration
Economic Development Assistance Programs
PROGRAM CHANGES FOR 2019**

(Dollar amounts in thousands)

		2019 Base		2019 Estimate		Increase/Decrease from 2019 Base	
		Personnel	Amount	Personnel	Amount	Personnel	Amount
Technical Assistance	Pos./BA	0	8,562	0	0	0	-8,562
	FTE/Obl.	0	10,000	0	0	0	-10,000

EDA is not requesting any resources for its Technical Assistance Program.

[THIS PAGE INTENTIONALLY LEFT BLANK]

**Department of Commerce
Economic Development Administration
PROGRAM AND PERFORMANCE: DIRECT OBLIGATIONS**

(Dollar amounts in thousands)

Activity: Economic Development Assistance Programs
Subactivity: Research and Evaluation

Line Item		2017		2018		2019		2019		Increase/Decrease	
		Actual		Annualized CR		Base		Estimate		from 2019 Base	
		Personnel	Amount	Personnel	Amount	Personnel	Amount	Personnel	Amount	Personnel	Amount
Grants	Pos./BA	0	1,500	0	1,427	0	1,427	0	0	0	-1,427
	FTE/Obl	0	2,592	0	1,400	0	1,400	0	0	0	-1,400
Total	Pos./BA	0	1,500	0	1,427	0	1,427	0	0	0	-1,427
	FTE/Obl	0	2,592	0	1,400	0	1,400	0	0	0	-1,400

[THIS PAGE INTENTIONALLY LEFT BLANK]

**Department of Commerce
Economic Development Administration
Economic Development Assistance Programs
JUSTIFICATION OF PROGRAM AND PERFORMANCE**

Activity: Economic Development Assistance Programs
Subactivity: Research and Evaluation

Goal Statement

The Administration is not requesting funding for its grant programs including the Research and Evaluation Program.

Base Justification

EDA's Research and Evaluation funds supported the development of tools, recommendations, and resources to shape investment decisions in the Agency and inform policy makers as well as regional planning decision-making at the local level. Research and Evaluation Program investments provided cutting-edge research and evaluation of EDA's programs, including the identification of best practices, which were disseminated to regional, state, and local practitioners.

EDA's Research and Evaluation investments were designed to identify and disseminate the best thinking and best practices of economic development in the 21st century. Methodologically sound program evaluations helped to identify the most effective ways to increase the return on taxpayer investment, increase private capital investment, and create higher-skill, higher-wage jobs. The Research and Evaluation Program was carried out through grants and cooperative agreements, as well as through studies conducted in-house by EDA research staff.

The program's authorizing statute is the Public Works and Economic Development Act (PWEDA) of 1965, as amended (42 U.S.C. § 3121 et seq.).

Statement of Operating Objectives

N/A

Explanation and Justification

No resources are being requested for this program.

[THIS PAGE INTENTIONALLY LEFT BLANK]

**Department of Commerce
Economic Development Administration
Economic Development Assistance Programs
PROGRAM CHANGES FOR 2019**

(Dollar amounts in thousands)

		2019 Base		2019 Estimate		Increase/Decrease from 2019 Base	
		Personnel	Amount	Personnel	Amount	Personnel	Amount
Research and Evaluation	Pos./BA	0	1,427	0	0	0	-1,427
	FTE/Obl.	0	1,400	0	0	0	-1,400

EDA is not requesting any resources for its Research and Evaluation Program.

[THIS PAGE INTENTIONALLY LEFT BLANK]

**Department of Commerce
Economic Development Administration
PROGRAM AND PERFORMANCE: DIRECT OBLIGATIONS**

(Dollar amounts in thousands)

Activity: Economic Development Assistance Programs
Subactivity: Trade Adjustment Assistance

Line Item		2017		2018		2019		2019		Increase/Decrease	
		Actual		Annualized CR		Base		Estimate		from 2019 Base	
		Personnel	Amount	Personnel	Amount	Personnel	Amount	Personnel	Amount	Personnel	Amount
Grants	Pos./BA	0	13,000	0	12,367	0	12,367	0	0	0	-12,367
	FTE/Obl	0	13,309	0	13,000	0	13,000	0	0	0	-13,000
Total	Pos./BA	0	13,000	0	12,367	0	12,367	0	0	0	-12,367
	FTE/Obl	0	13,309	0	13,000	0	13,000	0	0	0	-13,000

[THIS PAGE INTENTIONALLY LEFT BLANK]

**Department of Commerce
Economic Development Administration
Economic Development Assistance Programs
JUSTIFICATION OF PROGRAM AND PERFORMANCE**

Activity: Economic Development Assistance Programs
Subactivity: Trade Adjustment Assistance

Goal Statement

The Administration is not requesting funding for its grant programs including the Trade Adjustment Assistance for Firms Program.

Base Justification

The mission of the Trade Adjustment Assistance for Firms (TAAF) Program was to help import-impacted U.S. firms regain competitiveness in the global marketplace, thereby helping to retain and create U.S. jobs. The program provided cost-shared direct technical assistance in the development of business recovery plans, which are known as Adjustment Proposals (APs) under Section 252 of the Trade Act, as well as federal matching funds to implement projects outlined in the proposals to expand markets, strengthen operations and increase competitiveness. Firms contributed a matching share to create and implement their recovery plans.

The TAAF Program provided technical assistance to help U.S. firms experiencing a decline in sales and employment, resulting in part from the increase in imports of similar or directly competitive articles, to become more competitive in the global marketplace. The TAAF Program was a trade remedy mechanism which, rather than relying on tariffs, quotas or duties, supported free trade by helping trade import-impacted firms and industries regain their economic competitiveness. EDA funded and worked in partnership with a national network of 11 Trade Adjustment Assistance Centers (TAACs).

EDA's TAAF Program is authorized under chapters 3 and 5 of title II of the Trade Act of 1974, as amended (19 U.S.C. § 2341 et seq.).

Statement of Operating Objectives

N/A

Explanation and Justification

No resources are being requested for this program.

[THIS PAGE INTENTIONALLY LEFT BLANK]

**Department of Commerce
Economic Development Administration
Economic Development Assistance Programs**

CHANGES FOR 2019

(Dollar amounts in thousands)

			2019 Base		2019 Estimate		Increase/Decrease from 2019 Base	
			Personnel	Amount	Personnel	Amount	Personnel	Amount
Trade Adjustment Assistance	Pos./BA		0	12,367	0	0	0	-12,367
	FTE/Obl.		0	13,000	0	0	0	-13,000

EDA is not requesting any resources for its Trade Adjustment Assistance for Firms Program.

[THIS PAGE INTENTIONALLY LEFT BLANK]

**Department of Commerce
Economic Development Administration
PROGRAM AND PERFORMANCE: DIRECT OBLIGATIONS**

(Dollar amounts in thousands)

Activity: Economic Development Assistance Programs
Subactivity: Economic Adjustment Assistance

Line Item		2017		2018		2019		2019		Increase/Decrease	
		Actual		Annualized CR		Base		Estimate		from 2019 Base	
		Personnel	Amount	Personnel	Amount	Personnel	Amount	Personnel	Amount	Personnel	Amount
Grants	Pos./BA	0	35,000	0	33,295	0	33,295	0	0	0	-33,295
	FTE/Obl	0	42,435	0	44,000	0	44,000	0	0	0	-44,000
Total	Pos./BA	0	35,000	0	33,295	0	33,295	0	0	0	-33,295
	FTE/Obl	0	42,435	0	44,000	0	44,000	0	0	0	-44,000

[THIS PAGE INTENTIONALLY LEFT BLANK]

**Department of Commerce
Economic Development Administration
Economic Development Assistance Programs
JUSTIFICATION OF PROGRAM AND PERFORMANCE**

Activity: Economic Development Assistance Programs
Subactivity: Economic Adjustment Assistance

Goal Statement

The Administration is not requesting funding for its grant programs including the Economic Adjustment Assistance (EAA) Program.

Base Justification

Part of EDA's mission was to help distressed communities address problems associated with long-term economic distress, as well as sudden and severe economic dislocations including recovering from the economic impacts of natural disasters, the closure of military installations and other Federal facilities, changing trade patterns, and the depletion of natural resources.

Through the EAA Program, EDA helped local communities design and implement strategies to address evolving economic conditions that were causing or threatened to cause serious structural damage to the underlying economic base or were undermining *locally-developed* development goals. The EAA Program provided the Agency a robust array of resources that could be brought to bear to support construction, technical assistance, and financing projects that helped distressed communities become more competitive and more prosperous. Specifically, the EAA program provided resources to address the needs of communities impacted by globalization, especially communities that needed to develop and implement collaborative regional innovation strategies to transform and diversify their economies and position them competitively. EAA funds could be used to provide support such as designing a transition strategy, constructing or upgrading public infrastructure, conducting feasibility or environmental studies, supporting construction and operations of incubators and business accelerators, capitalizing locally or regionally administered Revolving Loan Funds (RLFs).

EDA requires special authority to close down its RLFs (i.e. defederalize), which are designed to run in perpetuity. As of September 2016, EDA oversees more than 520 RLFs nationwide, with a combined EDA investment of almost \$538 million. EDA's RLF portfolio has a combined capital base of about \$824 million (includes EDA investment plus grantee matching funds plus interest income), of which approximately \$267 million is available for lending.

The following language is proposed in the general provisions for the Department of Commerce to allow for the defederalization of EDA's Revolving Loan Fund grants:

SEC. 543. Section 601(d)(2) of the Public Works and Economic Development Act of 1965, as amended (42 U.S.C. 3211), is amended—

(1) by striking “(2) RELEASE.—” and inserting the following:

“(2) RELEASE.—

“(A) IN GENERAL.—”; and

(2) by adding at the end the following:

“(B) REVOLVING LOAN FUND PROGRAM.—

The Secretary may release, subject to terms and conditions the Secretary determines appropriate, the Federal Government’s interest in connection with a grant under section 209(d) not less than 7 years after final disbursement of the grant, if—

“(i) the recipient has carried out the terms of the award in a satisfactory manner;

“(ii) any proceeds realized from the release of the Federal Government’s interest will be used for one or more activities that continue to carry out the economic development purposes of this Act; and

“(iii) the recipient shall provide adequate assurance to the Secretary that at all times after release of the Federal Government’s interest in connection with the grant, the recipient will be responsible for continued compliance with the requirements of section 602 in the same manner it was responsible prior to release of the Federal Government’s interest and that the recipient’s failure to comply shall result in the Secretary taking appropriate action”.

The EAA Program provided strategic investments to support economic recovery in regions affected by natural disasters, natural resource depletion, mass layoffs, and other severe economic shocks; to assist communities in restructuring and diversifying regional economies buffeted by steep declines in traditional sources of employment such as manufacturing, agriculture, fishing, or logging; and to aid communities suffering from chronic unemployment and underinvestment. EDA also used it to fund investments to respond to communities impacted by military Base Realignments and Closures (BRAC).

The program’s authorizing statute is the EDA’s Public Works and Economic Development Act (PWEDA) of 1965, as amended (42 U.S.C. § 3121 et seq.).

Statement of Operating Objectives

N/A

Explanation and Justification

No resources are being requested for this program.

**Department of Commerce
Economic Development Administration
Economic Development Assistance Programs
PROGRAM CHANGES FOR 2019**

(Dollar amounts in thousands)

		2019 Base		2019 Estimate		Increase/Decrease from 2019 Base	
		Personnel	Amount	Personnel	Amount	Personnel	Amount
Economic Adjustment Assistance	Pos./BA	0	33,295	0	0	0	-33,295
	FTE/Obl.	0	44,000	0	0	0	-44,000

EDA is not requesting any resources for its Economic Adjustment Assistance Program.

[THIS PAGE INTENTIONALLY LEFT BLANK]

**Department of Commerce
Economic Development Administration
PROGRAM AND PERFORMANCE: DIRECT OBLIGATIONS**

(Dollar amounts in thousands)

Activity: Economic Development Assistance Programs
Subactivity: Assistance to Coal Communities

Line Item		2017		2018		2019		2019		Increase/Decrease	
		Actual		Annualized CR		Base		Estimate		from 2019 Base	
		Personnel	Amount	Personnel	Amount	Personnel	Amount	Personnel	Amount	Personnel	Amount
Grants	Pos./BA	0	30,000	0	28,539	0	28,539	0	0	0	-28,539
	FTE/Obl	0	30,657	0	30,000	0	30,000	0	0	0	-30,000
Total	Pos./BA	0	30,000	0	28,539	0	28,539	0	0	0	-28,539
	FTE/Obl	0	30,657	0	30,000	0	30,000	0	0	0	-30,000

[THIS PAGE INTENTIONALLY LEFT BLANK]

**Department of Commerce
Economic Development Administration
Economic Development Assistance Programs
JUSTIFICATION OF PROGRAM AND PERFORMANCE**

Activity: Economic Development Assistance Programs
Subactivity: Assistance to Coal Communities

Goal Statement

The Administration is not requesting funding for its grant programs including the Assistance to Coal Communities Program.

Base Justification

This program competitively awarded grants to coalitions of regionally-driven economic development and workforce development organizations anchored in impacted coal communities. These grants enabled grantees to take deliberate and measured steps to build economic resilience and industry diversification, and promote new job creation opportunities. Eligible activities included helping communities: organize themselves to respond on behalf of affected workers and businesses; strengthen or develop targeted industry clusters; prepare and train the existing workforce for new jobs; and help and execute coordinated economic and workforce development activities based on communities' strategic plans. These activities should result in more competitive and resilient "pipelines" of skilled workers moving into new job opportunities.

This program line was created by the Consolidated and Further Continuing Appropriation Act, 2015 (PL 113-235) and is executed using EDA's current program authorities pursuant to EDA's authorizing statute, the Public Works and Economic Development Act (PWEDA) of 1965, as amended (42 U.S.C. § 3121 *et seq.*).

Statement of Operating Objectives

N/A

Explanation and Justification

No resources are being requested for this program.

[THIS PAGE INTENTIONALLY LEFT BLANK]

**Department of Commerce
Economic Development Administration
Economic Development Assistance Programs
PROGRAM CHANGES FOR 2019**

(Dollar amounts in thousands)

		2019 Base		2019 Estimate		Increase/Decrease from 2019 Base	
		Personnel	Amount	Personnel	Amount	Personnel	Amount
Assistance to Coal Communities	Pos./BA	0	28,539	0	0	0	-28,539
	FTE/Obl.	0	30,000	0	0	0	-30,000

EDA is not requesting any resources for its Assistance to Coal Communities Program.

[THIS PAGE INTENTIONALLY LEFT BLANK]

**Department of Commerce
Economic Development Administration
PROGRAM AND PERFORMANCE: DIRECT OBLIGATIONS**

(Dollar amounts in thousands)

Activity: Economic Development Assistance Programs
Subactivity: Innovative Technologies in Manufacturing Loan Guarantees

Line Item		2017		2018		2019		2019		Increase/Decrease	
		Actual		Annualized CR		Base		Estimate		from 2019 Base	
		Personnel	Amount	Personnel	Amount	Personnel	Amount	Personnel	Amount	Personnel	Amount
Grants	Pos./BA	0	0	0	0	0	0	0	0	0	0
	FTE/Obl	0	0	0	0	0	0	0	0	0	0
Total	Pos./BA	0	0	0	0	0	0	0	0	0	0
	FTE/Obl	0	0	0	0	0	0	0	0	0	0

[THIS PAGE INTENTIONALLY LEFT BLANK]

**Department of Commerce
Economic Development Administration
Economic Development Assistance Programs
JUSTIFICATION OF PROGRAM AND PERFORMANCE**

Activity: Economic Development Assistance Programs
Subactivity: Innovative Technologies in Manufacturing Loan Guarantees

Goal Statement

The Administration is not requesting funding for its grant and other financial assistance programs, including the Innovative Technologies in Manufacturing Loan Guarantees Program.

Base Justification

Innovative Technologies in Manufacturing Loan Guarantees Program was designed to provide financing to small- to medium-sized manufacturers for projects that equip, expand, or establish a manufacturing facility in the United States for the use or production of innovation technologies. This loan guarantee program would also support commercializing an innovative product, process or idea developed by research funded in whole or in part by a grant from the Federal government. Authorized by Congress in 2011, this Program has not developed program infrastructure and implementing regulations, and had not issued any loan guarantees.

The program's authorizing statute is section 26 of the Stevenson-Wydler Technology Innovation Act of 1980, (15 U.S.C. § 3721).

Statement of Operating Objectives

N/A

Explanation and Justification

No resources are being requested for this program.

[THIS PAGE INTENTIONALLY LEFT BLANK]

**Department of Commerce
Economic Development Administration
Economic Development Assistance Programs
PROGRAM CHANGES FOR 2019**

(Dollar amounts in thousands)

		2019 Base		2019 Estimate		Increase/Decrease from 2019 Base	
		Personnel	Amount	Personnel	Amount	Personnel	Amount
Innovative Technologies in	Pos./BA	0	0	0	0	0	0
Manufacturing Loan Guarantees	FTE/Obl.	0	0	0	0	0	0

EDA is not requesting resources for its Innovative Technologies in Manufacturing Loan Guarantees Program.

[THIS PAGE INTENTIONALLY LEFT BLANK]

**Department of Commerce
Economic Development Administration
PROGRAM AND PERFORMANCE: DIRECT OBLIGATIONS**

(Dollar amounts in thousands)

Activity: Economic Development Assistance Programs
Subactivity: Regional Innovation

Line Item		2017		2018		2019		2019		Increase/ (Decrease)	
		Actual	Amount	Annualized CR	Amount	Base	Amount	Estimate	Amount	Personnel	Amount
Grants	Pos./BA	0	17,000	0	16,172	0	16,172	0	0	0	-16,172
	FTE/Obl	0	32,100	0	17,000	0	17,000	0	0	0	-17,000
Total	Pos./BA	0	17,000	0	16,172	0	16,172	0	0	0	-16,172
	FTE/Obl	0	32,100	0	17,000	0	17,000	0	0	0	-17,000

[THIS PAGE INTENTIONALLY LEFT BLANK]

**Department of Commerce
Economic Development Administration
Economic Development Assistance Programs
JUSTIFICATION OF PROGRAM AND PERFORMANCE**

Activity: Economic Development Assistance Programs
Subactivity: Regional Innovation

Goal Statement

The Administration is not requesting funding for its grant programs including the Regional Innovation Program (RIP).

Base Justification

The RIP was a distinct program in EDA’s portfolio that awarded funds to a broad range of communities and entities to develop and strengthen high-growth, innovation-based regional economies. The program aimed to build local capacity for economic growth through strategic investment opportunities that leverage the innovation capacity found in America’s regions by supporting sector- and cluster-based, high-growth entrepreneurship.

The RIP had two components identified through its authorizing legislation: Cluster Grants and the Regional Innovation Research and Information (RIRI) Program. Cluster Grants supported activities relating to the formation and development of regional innovation clusters. The RIRI Program was designed to provide research, technical assistance, performance metrics and data pertaining to regional innovation strategies and clusters. To date, all funding had been allocated to the Cluster Grants.

This program’s authorizing statute is Section 27 of the Stevenson-Wydler Technology Innovation Act of 1980, as amended (13 U.S.C. § 3722).

Statement of Operating Objectives

N/A

Explanation and Justification

No resources are being requested for this program.

[THIS PAGE INTENTIONALLY LEFT BLANK]

**Department of Commerce
Economic Development Administration
Economic Development Assistance Programs**

PROGRAM CHANGES FOR 2019

(Dollar amounts in thousands)

		2019 Base		2019 Estimate		Increase/Decrease from 2019 Base	
		Personnel	Amount	Personnel	Amount	Personnel	Amount
	Pos./BA	0	16,172	0	0	0	-16,172
Regional Innovation	FTE/Obl.	0	17,000	0	0	0	-17,000

EDA is not requesting any resources for its Regional Innovation Program.

[THIS PAGE INTENTIONALLY LEFT BLANK]

**Department of Commerce
Economic Development Administration
Economic Development Assistance Programs
SUMMARY OF REQUIREMENTS BY OBJECT CLASS**

(Dollar amounts in thousands)

Object Class	2017 Actual	2018 Annualized CR	2019 Base	2019 Estimate	Increase/Decrease over 2019 Base
41 Grants, subsidies and contributions	293,380	268,400	268,400	0	(268,400)
99.9 Total Obligations	293,380	268,400	268,400	0	(268,400)
Less prior year recoveries	40,582	36,433	36,433	32,000	(4,433)
Less prior year unobligated balance	70,894	43,950	43,950	27,441	(16,509)
Less unobligated balance tranferred	(1,146)	0	0	0	0
Less unobligated balance, end of year	(43,950)	(27,441)	(27,441)	(19,441)	8,000
Less rescission	(10,000)	(10,000)	(10,000)	(40,000)	(30,000)
Total Budget Authority	237,000	225,458	225,458	0	(225,458)
 Personnel Data					
Full-Time equivalent Employment:					
Full-time permanent	0	0	0	0	0
Other than full-time permanent	0	0	0	0	0
Total	0	0	0	0	0
 Authorized Positions:					
Full-time permanent	0	0	0	0	0
Other than full-time permanent	0	0	0	0	0
Total	0	0	0	0	0

[THIS PAGE INTENTIONALLY LEFT BLANK]

**Department of Commerce
Economic Development Administration
Economic Development Assistance Programs
JUSTIFICATION OF PROPOSED LANGUAGE CHANGES**

FY 2019

This language is proposed for the orderly closedown of the Economic Development Administration and its grants and loans previously awarded.

ECONOMIC DEVELOPMENT ASSISTANCE PROGRAMS

In addition to amounts made available to the Economic Development Administration under the heading "Salaries and Expenses", unobligated balances previously appropriated under this heading, to remain available until expended, for purposes of the closure of the Economic Development Administration, including but not limited to, ongoing administration, oversight and monitoring of grants and loans previously awarded by the Economic Development Administration, whether expended by the Economic Development Administration or a successor operating unit within the Department of Commerce: Provided, That such funds will be available to such successor operating unit in addition to any other amounts that may be appropriated for the necessary expenses of such operating unit from whatever source.

[THIS PAGE INTENTIONALLY LEFT BLANK]

**Department of Commerce
Economic Development Administration
Economic Development Assistance Programs
APPROPRIATION LANGUAGE AND CODE CITATION**

FY 2019

Economic Development Assistance Programs

- 1 For necessary expenses of the economic development assistance programs as provided for by law,

42 U.S.C. 3214(c), 3231

42 U.S.C. 3214(c) - Authorizes the transfer of appropriated funds from other Federal agencies, if such funds are used for the purpose for which (and in accordance with the terms under which) the funds are specifically authorized and appropriated.

42 U.S.C. 3231 - Authorizes funds to be appropriated for economic development assistance programs to carry out 42 U.S.C. 3121 et seq., through fiscal year 2008, to remain available until expended.

- 2 Authorization of appropriations for defense conversion activities,

42 U.S.C. 3232

42 U.S.C. 3232(a) - In addition to amounts made available under section 3231 of this title, there are authorized to be appropriated such sums as are necessary to carry out section 3149(c)(1) of this title, to remain available until expended.

42 U.S.C. 3232(b) - Funds made available under subsection (a) of this section may be used for activities including pilot projects for privatization of, and economic development activities for, closed or realigned military or Department of Energy installations.

- 3 Authorization of appropriations for disaster economic recovery activities,

42. U.S.C. 3233

42. U.S.C. 3233(a) - In addition to amounts made available under section 3231 of this title, there are authorized to be appropriated such sums as are necessary to carry out section 3149(c)(2) of this title, to remain available until expended.

42. U.S.C. 3233(b) - The Federal share of the cost of activities funded with amounts made available under subsection (a) of this section shall be up to 100 percent.

4 Funding for grants for planning and grants for administrative expenses,

42 U.S.C. 3234

Of the amounts made available under section 3231 of this title for each fiscal year, not less than \$27,000,000 shall be made available for grants provided under section 3143 of this title.

5 Provided, that these funds may be used to monitor projects approved pursuant to title I of the Public Works Employment Act of 1976, as amended,

42 U.S.C. 6710

42 U.S.C. 6710 - Authorized appropriations for the administration of the Local Public Works Capital Development and Investment Act of 1976.

6 Title II of the Trade Act of 1974, as amended, and 19 U.S.C. 2345 – Authorizes appropriations to carry out Trade Adjustment Assistance for Firms (TAAF),

Public Law No: 114-27, Trade Preferences Extension Act of 2015. Title IV of that Act, entitled the “Trade Adjustment Assistance Reauthorization Act of 2015” extends the authorization of appropriations for TAAF through fiscal year 2021.

7 The Community Emergency Drought Relief Act of 1977 (including monitoring and close out),

42 U.S.C. 5184 note

42 U.S.C. 5184 note - Authorized appropriations to carry out those provisions of the Community Emergency Drought Relief Act of 1977.

8 For section 27 of the Stevenson-Wydler Technology Innovation Act of 1980 (15 U.S.C. 3722).

**Department of Commerce
Economic Development Administration
Salaries and Expenses
SUMMARY OF RESOURCE REQUIREMENTS**
(Dollar amounts in thousands)

	Positions	FTE	Budget Authority	Direct Obligations
FY 2018 CR Annualized	190	0	38,735	38,735
<i>2019 Adjustments to base:</i>				
<i>Plus: Restoration of recoveries/unobligated balances used to offset 20CY appropriation/non-recurring</i>			0	0
<i>Plus: Inflationary/Adjustments to base</i>			(2,477)	(2,477)
<i>Less: Estimated recoveries, 2019</i>			0	0
2019 Base	190	0	36,258	36,258
<i>Plus: 2019 Program changes</i>	(126)	0	(21,321)	(21,321)
2019 Estimate	64	0	14,937	14,937

Comparison by activity / subactivity with totals by activity		2017		2018		2019		2019		Increase/Decrease	
		Actual		Annualized CR		Base		Estimate		from 2019 Base	
		Personnel	Amount	Personnel	Amount	Personnel	Amount	Personnel	Amount	Personnel	Amount
EDA -87	Operations	Pos./BA	190 40,146	190 38,735	190 36,258	64 14,937	(126) (21,321)				
		FTE/Obl.	184 39,225	184 39,435	184 36,258	58 14,937	(126) (21,321)				
	Total	Pos./BA	190 40,146	190 38,735	190 36,258	64 14,937	(126) (21,321)				
		FTE/Obl.	184 39,225	184 39,435	184 36,258	58 14,937	(126) (21,321)				
Adjustments for:											
	Recoveries		0	0	0	0	0	0	0	0	0
	Unobligated balance, start of year		0	(700)	0	0	0	0	0	0	0
	Unobligated balance transferred		(1,146)	0	0	0	0	0	0	0	0
	Unobligated balance, end of year		700	0	0	0	0	0	0	0	0
	Unobligated balance expiring		221	0	0	0	0	0	0	0	0
Financing from transfers:											
	Transfer from other accounts (-)		0	0	0	0	0	0	0	0	0
	Transfer to other accounts (+)		0	0	0	0	0	0	0	0	0
Appropriation			39,000	38,735	36,258	14,937	(21,321)				

[THIS PAGE INTENTIONALLY LEFT BLANK]

**Department of Commerce
Economic Development Administration
Salaries and Expenses**

SUMMARY OF REIMBURSABLE OBLIGATIONS

(Dollar amounts in thousands)

Comparison by activity:		2017		2018		2019		2019		Increase/Decrease	
		Actual		Annualized CR		Base		Estimate		from 2019 Base	
		Personnel	Amount	Personnel	Amount	Personnel	Amount	Personnel	Amount	Personnel	Amount
Operations	Pos./BA	0	1,819	1	950	1	950	0	0	-1	-950
	FTE/Obl.	0	1,819	0	0	0	0	0	0	0	0
Total	Pos./BA	0	1,819	1	950	1	950	0	0	-1	-950
	FTE/Obl.	0	1,819	0	0	0	0	0	0	0	0

[THIS PAGE INTENTIONALLY LEFT BLANK]

**Department of Commerce
Economic Development Administration
Salaries and Expenses
SUMMARY OF FINANCING**

(Dollar amounts in thousands)

	2017 Actual	2018 Annualized CR	2019 Base	2019 Estimate	Increase/Decrease from 2019 Base
Total Obligations	41,044	39,435	36,258	14,937	(21,321)
Offsetting collections from:					
Federal funds	(1,819)	0	0	0	0
Trust funds	0	0	0	0	0
Non-Federal sources	0	0	0	0	0
Recoveries	0	0	0	0	0
Unobligated balance, start of year	0	(700)	0	0	0
Unobligated balance, transferred	(1,146)	0	0	0	0
Unobligated balance, end of year	700	0	0	0	0
Unobligated balance, expiring	221	0	0	0	0
Budget Authority	39,000	38,735	36,258	14,937	(21,321)
Financing:					
Transfer from other accounts (-)	0	0	0	0	0
Transfer to other accounts (+)	0	0	0	0	0
Appropriation	39,000	38,735	36,258	14,937	(21,321)

[THIS PAGE INTENTIONALLY LEFT BLANK]

**Department of Commerce
Economic Development Administration
Salaries and Expenses
ADJUSTMENTS TO BASE**

(Dollar amounts in thousands)

	<u>FTE</u>	<u>Amount</u>
Transfers of Estimates	0	0
Adjustment	0	0
Financing	0	0
Other Changes		
2018 Pay raise		50
2019 Pay raise	0	0
Full-year cost in 2019 of positions financed for part-year in 2018	0	0
Change in compensable days		43
Civil Service Retirement System (CSRS)		(6)
Federal Employees Retirement System (FERS)		23
Thrift Savings Plan		2
Federal Insurance Contribution Act (FICA) - OASDI		18
Health insurance		19
Employees Compensation Fund		(56)
Travel:		
Mileage		(2)
Per diem		5
Rental payments to GSA		18
Postage		0
Printing and reproduction		0
NARA Storage & Maintenance		5
Other services:		
Working Capital Fund		(2,650)
Grants		0
General Pricing Level Adjustment		55
Subtotal, other changes	0	(2,477)
Total, adjustments to base	0	(2,477)

[THIS PAGE INTENTIONALLY LEFT BLANK]

**Department of Commerce
Economic Development Administration
Salaries and Expenses
PROGRAM AND PERFORMANCE: DIRECT OBLIGATIONS**

(Dollar amounts in thousands)

Activity: Salaries and Expenses
Subactivity: Operations

Line Item	2017		2018		2019		2019		Increase/Decrease	
	Actual		Annualized CR		Base		Estimate		from 2019 Base	
	Personnel	Amount	Personnel	Amount	Personnel	Amount	Personnel	Amount	Personnel	Amount
Operations Pos./BA	190	40,146	190	38,735	190	36,258	64	14,937	-126	-21,321
Operations FTE/Obl	184	39,225	184	39,435	184	36,258	58	14,937	-126	-21,321
Total Pos./BA	190	40,146	190	38,735	190	36,258	64	14,937	-126	-21,321
Total FTE/Obl	184	39,225	184	39,435	184	36,258	58	14,937	-126	-21,321

[THIS PAGE INTENTIONALLY LEFT BLANK]

**Department of Commerce
Economic Development Administration
Salaries and Expenses
PROGRAM AND PERFORMANCE: REIMBURSABLE OBLIGATIONS**

(Dollar amounts in thousands)

Comparison by activity		2017		2018		2019		2019		Increase/Decrease	
		Actual		Annualized CR		Base		Estimate		from 2019 Base	
		FTE	Amount	FTE	Amount	FTE	Amount	FTE	Amount	FTE	Amount
Operations	Pos./BA	0	1,819	1	950	1	950	0	0	-1	-950
	FTE/Obl	0	1,819	0	0	0	0	0	0	0	0
Total	Pos./BA	0	1,819	1	950	1	950	0	0	-1	-950
	FTE/Obl	0	1,819	0	0	0	0	0	0	0	0

[THIS PAGE INTENTIONALLY LEFT BLANK]

**Department of Commerce
Economic Development Administration
Salaries and Expenses**

JUSTIFICATION OF PROGRAM AND PERFORMANCE

Activity: Salaries and Expenses
Subactivity: Operations

Goal Statement

For FY 2019, EDA requests a decrease of \$21.3 million and 126 personnel below the FY 2018 continuing resolution annualized level, for a total of \$14.9 million and 64 positions for the Salaries and Expenses (S&E) account.

Base Program

The Salaries and Expenses appropriation generally supports the orderly closedown of EDA and the on-going administration, monitoring, and close out of grants and loans previously awarded by EDA. These activities will be carried out through a steadily reducing footprint consisting of headquarters located in Washington, DC, and six Regional Offices located in Atlanta, Austin, Chicago, Denver, Philadelphia, and Seattle.

Executive Direction: The Assistant Secretary directs the Bureau's programs and is responsible for the conduct of all closedown activities at EDA's headquarters and Regional Offices, subject to the policies and directives prescribed by the Secretary of Commerce.

The Deputy Assistant Secretary and Chief Operating Officer assists the Assistant Secretary in all matters affecting EDA and performs the duties of the Assistant Secretary during the latter's absence.

Office of the Chief Counsel: The Office of the Chief Counsel (OCC) prepares and reviews legal documents to ensure that the orderly closedown of EDA and on-going administration of previous grants and loans are consistent with applicable legal requirements imposed on Bureau programs by statute, regulation, executive order, OMB circular, or controlling policy document. The Chief Counsel directs and supervises the activities of the OCC, including those of EDA's six Regional Counsels in the field. OCC provides a full range of legal services incident to federal assistance law, such as reviewing the acceptability of title to property, sufficiency of diverse property-related agreements, and post-approval matters, such as resolving complex property issues relating to the use and disposition of project assets.

Office of Information Technology: The Office of Information Technology (OIT) develops and manages strategic information technology (IT) plans, annual IT operating plans and budgets, and IT capital asset plans and budgets. The Chief Information Officer directs and supervises the activities of the IT Office, including system and application development, information security, maintenance, and oversight of day-to-day operations.

The base program budget includes costs for providing information technology and computer system support for EDA, including those necessary for the on-going administration, monitoring, and close out of previous grants and loans awarded by EDA. This support includes the development, information security, maintenance, installation, operation, and support for all major information systems, networks, data bases, computers and office automation tools used in the Bureau by its executives, managers, and employees as EDA closes down.

The base program budget also establishes maintenance and support of the local computer networks that connect personal computers, printers, other devices and file shares, in and among the EDA offices (headquarters, the regional offices, and the remote Economic Development Representatives offices). The network provides the electronic mail system, support for other applications, and linkages to the external network that provides Internet services. The technical expertise and support costs necessary for the establishment, enhancement, and maintenance of the EDA public and internal Web sites that provide services to the government and to the public are also included in the base program costs.

Office of Finance and Management Services: The Chief Financial Officer/Chief Administration Officer (CFO/CAO) is the senior official for financial and administrative management within EDA. As such, the CFO/CAO is responsible for managing EDA's budget execution, managing financial and accounting activities, directs EDA's efforts related to preparation of financial statements and the annual financial audit, and coordinating and evaluating internal management control systems. The CFO/CAO is also responsible for providing administrative support services for EDA headquarters and oversight of these services at the Regional Offices, for those services not already provided at the Departmental level. These service areas include acquisition management, human capital management, facilities, real and personal property, records management, and other support activities.

The Administration Division provides a full range of non-financial administrative services, unless otherwise provided at the Department level, for EDA headquarters and oversight of these services at the Regional Offices. The Division provides records and property management, human capital management, procurement management, security oversight, loan management, audit oversight and resolution management, continuity of operations planning, and other support activities.

The Budget and Finance Division, in concert with bureau and Departmental officials, develops, prepares, and executes the annual EDA budget. The Division is responsible for the fiscal aspects of EDA programs, including programs entrusted to other Federal agencies, by monitoring fiscal controls for program and administrative expenses including accounting and financial statement preparation, allotment of funds, operating budgets, staffing limitations, and analysis of reports and resource proposals, consistent with the requirements of the Anti-Deficiency Act.

Office of External Affairs: The Director of External Affairs coordinates EDA's public affairs, legislative affairs and executive secretariat activities, and acts as point of contact for members of Congress, Congressional staff, other Federal agencies, state and local governments, the media, and the general public. The Division provides appropriate and comprehensive bureau information necessary to respond to Secretarial, Congressional, intergovernmental, other Federal bureau, and public requests related to the closedown of EDA, and prepares and processes controlled correspondence relating to grants and other bureau business.

The Public Affairs Division staff interacts with the public on behalf of the Bureau, and is responsible for the form, appearance, and content of all materials and information provided to EDA stakeholders, partners, customers, and the general public.

The Legislative Affairs Division coordinates all activities relating to Bureau relations and interactions with members of Congress, Congressional staff, other federal agencies, state and local elected officials, and other governmental and non-governmental organizations through all manner of written and verbal communication.

Office of Regional Affairs: The Deputy Assistant Secretary for Regional Affairs oversees program operations in the six regional offices, the Performance and National Programs Division, Trade Adjustment Assistance Division, Economic Development Integration, Operations, Policy and Compliance Division and the Innovative Technologies in Manufacturing (ITM) Loan Guarantee Program. As part of this responsibility, the Deputy Assistant Secretary for Regional Affairs ensures a bureau-wide focus on closing down EDA effectively; and the development and implementation of

adequate internal controls to ensure EDA exercises adequate fiduciary oversight of its programs as it closes down. The Office of Regional Affairs develops and maintains program guidance, policies, directives, and operating procedures to ensure efficient administration of EDA's financial assistance programs as the bureau closes down.

The Performance and National Programs Division measures EDA program performance with an eye to improving internal controls and promoting best practices that will result in efficient closedown of EDA. The Performance and National Programs staff is also responsible for oversight, monitoring and close out of research and national technical assistance grants as the bureau closes down. They will also handle all close out performance reporting to the Office of Management and Budget, the Department, Congress and other stakeholders.

The Trade Adjustment Assistance Division is responsible for oversight, monitoring and close out of grants to Trade Adjustment Assistance Centers (TAACs) across the nation which provide technical assistance to manufacturing firms to help them increase their global competitiveness.

The six Regional Offices include the six Regional Directors and their supporting operational, technical, and administrative personnel. Regional Directors are responsible for the closedown of EDA's programs within specific geographic regions, the management of regional resources, and the monitoring and servicing of previously funded projects. The Regional Offices are staffed with Regional Counsels who provide the legal reviews required to administer and closedown EDA investments. The Regional staffs monitor and service approved projects at the local level.

Office of Innovation and Entrepreneurship: The Office of Innovation and Entrepreneurship (OIE) will monitor and service previously funded EDA grants that focused on promoting and supporting high-growth entrepreneurship and accelerating commercialization of federally funded research. OIE will ensure that these grants are closed out in a timely manner consistent with EDA's overall shutdown plan.

Statement of Operating Objectives

Support the orderly closedown of EDA and the on-going administration, monitoring, and close out of grants and loans previously awarded by EDA.

Explanation and Justification

The EDA worked directly with local economic development officials to support their bottom-up, regionally-owned economic development initiatives. Linking EDA's investments to a community's strategic economic development plan enables the federal government to better leverage public and private sector investments to achieve economic development goals. Economic development is about creating the conditions for sustained economic growth and improved quality of life and prosperity for our citizens by expanding the capacity of individuals, firms, and communities to maximize the use of their talents and skills to support innovation, lower transaction costs, and responsibly produce and trade valuable goods and services.

The way in which EDA had such a dramatic impact all across the country is through its Comprehensive Economic Development Strategy planning requirements. Economic development planning through the Comprehensive Economic Development Strategies (CEDs) is not only a cornerstone of EDA's programs, but successfully serves as a means to engage the community and region in building the regional capacity to ultimately create an environment for regional economic prosperity. EDA's successful model of economic development included the following key elements: focusing on regional economic ecosystems and bottom-up strategies; and leveraging regional assets to the fullest extent - businesses, existing and emerging industry clusters, supply chains, technology, infrastructure, institutions of higher learning, and human talent.

EDA's programs were designed to provide a full range of tools and resources that can help communities build the capacity to capitalize on their full economic potential—whether by addressing an immediate critical infrastructure need, assisting with the development of a regional strategic plan, or

helping a community connect to the worldwide marketplace. To build long-term capacity for sustained economic growth, EDA invested in partnership with our local communities to build strategic economic development assets which support long-term growth and competitiveness. These partnerships had a laser focus: catalyze private investment; leverage resources to support the establishment and growth of globally competitive businesses; as well as strengthen innovation, manufacturing supply chains, an employer-driven, skilled workforce, exports, and foreign direct investment.

**Department of Commerce
Economic Development Administration
Salaries and Expenses**

PROGRAM DECREASES FOR 2019

(Dollar amounts in thousands)

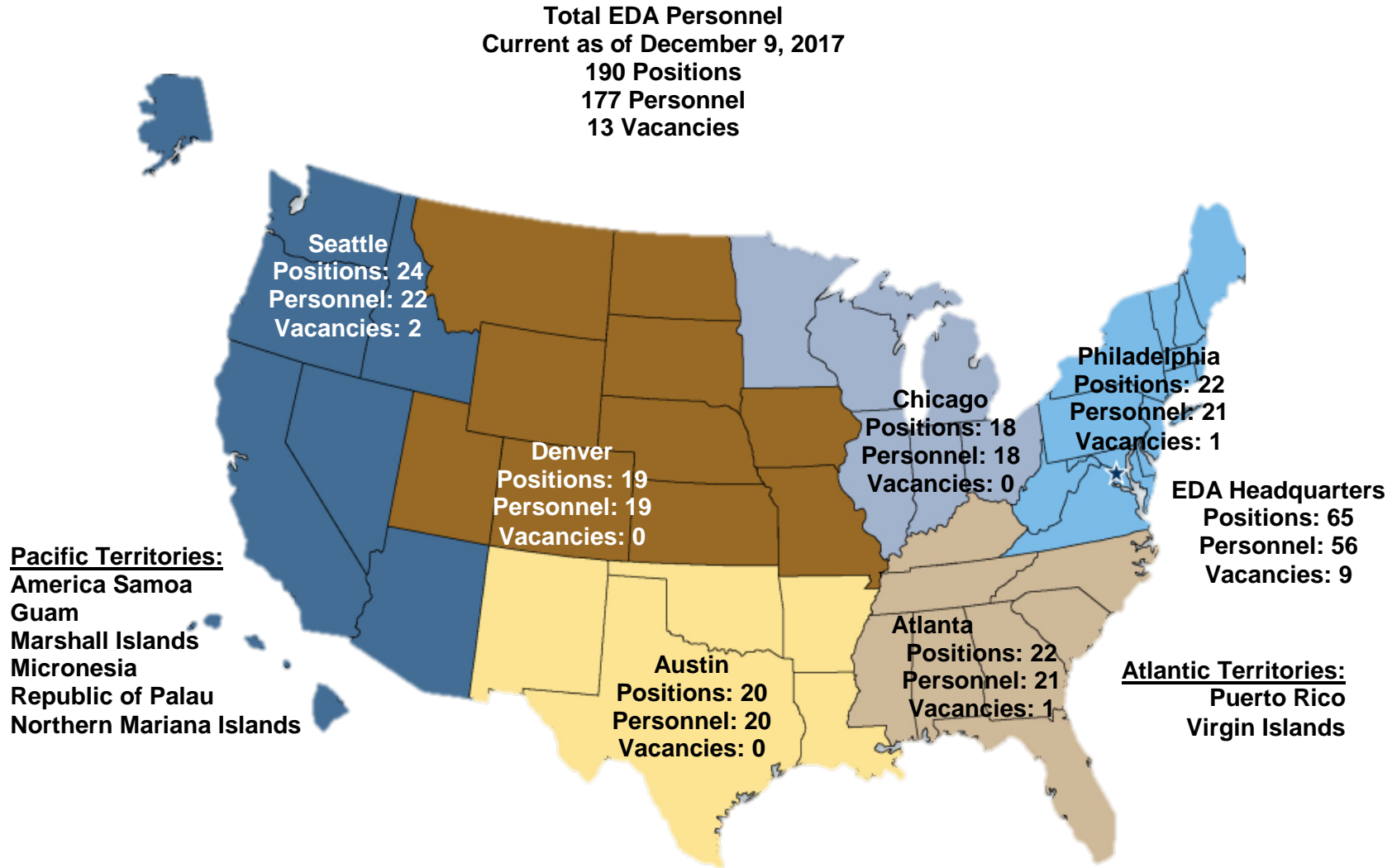
		2019 Base		2019 Estimate		Increase/Decrease from 2019 Base	
		Personnel	Amount	Personnel	Amount	Personnel	Amount
		Elimination of EDA	Pos./BA	190	36,258	64	14,937
	FTE/Obl.	184	36,258	58	14,937	-126	-21,321

Eliminating EDA (-126 FTE, -\$21,321) – This request allows for the orderly closure of EDA and ongoing grant monitoring, management, and close out activities. The amounts provided are intended to cover the following costs:

- Personnel costs, including severance payments, lump sum leave, salaries for essential personnel during the closure, human resources support for conducting the closure, and any legal costs.
- Real property, to cover either early termination fees or the full cost of the lease if necessary.
- Miscellaneous costs associated with closing down the agency, including records management, responsible disposal of IT equipment, furniture removal, and any other costs required for the orderly closure of the agency.

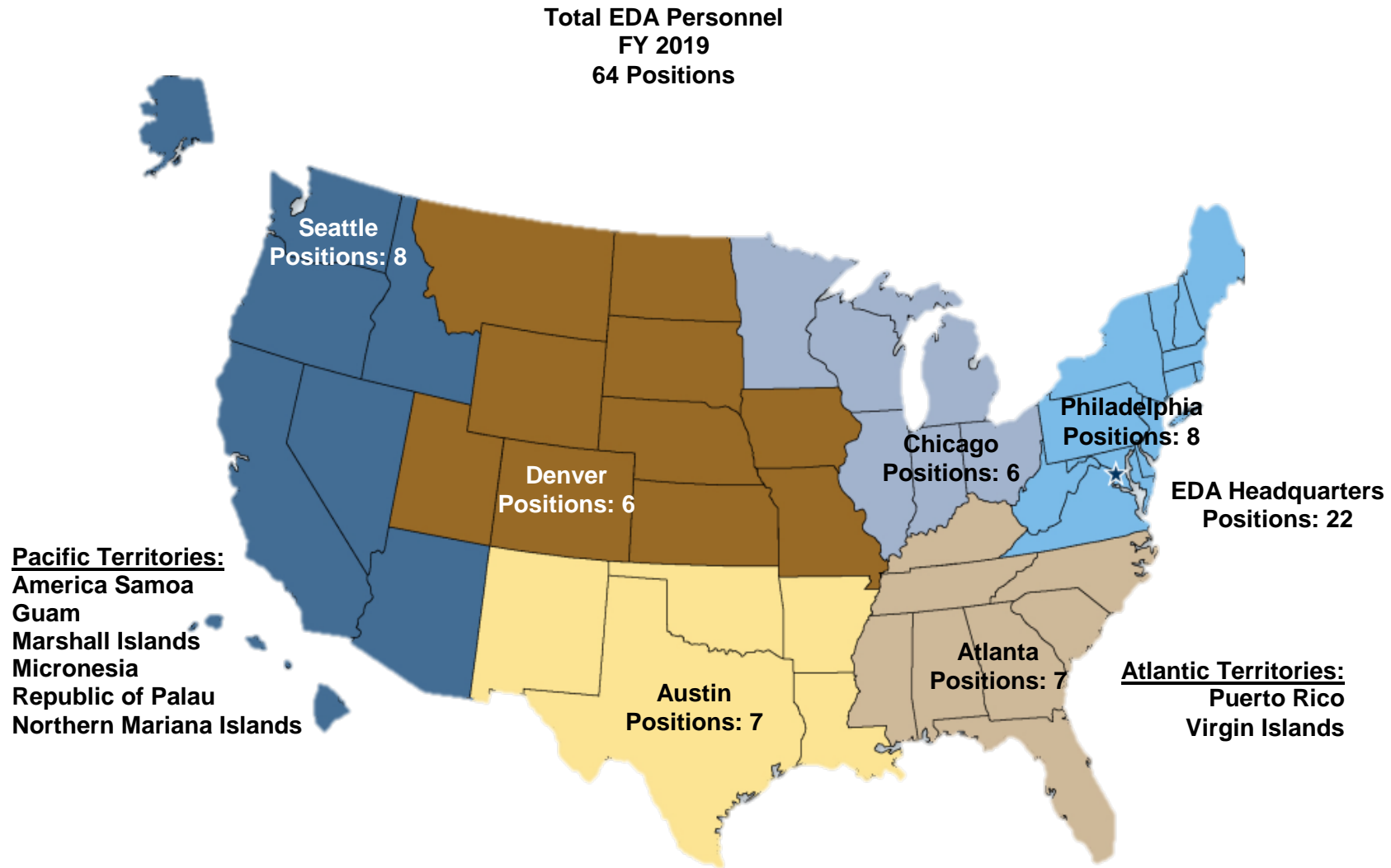
The close down plan includes the reduction of staff through involuntary separation and the transfer to another federal agency the monitoring and servicing of open grants and loans until their close out date. EDA estimates it will take six years to close the 2,387 open grants and loans remaining open as of November 2017. There will be continued costs to the organization to monitor and service EDA’s grants and loans until they are all closed. Those costs will decrease over time as the number of open grants and loans decreases. After the grants are closed, there is post-close-out work that will need to occur through the useful life of the projects, often up to 20 years. Additional monitoring and final disposition work is required for years after the closeout of a grant to ensure the grantees continue to use the facility for its intended purpose and to release the government interest in the property (e.g., mortgages) at the expiration of the useful life. This monitoring will also need to be performed by the federal grant making organization designated to assume EDA’s grant and management functions.

Figure 1
 EDA current staffing as of 9 December 2017



(NOTE: Funded vacant Headquarters political positions (7) are not included.)

Figure 2
EDA current staffing for FY 2019



[THIS PAGE INTENTIONALLY LEFT BLANK]

**Department of Commerce
Economic Development Administration
Salaries and Expenses
PROGRAM CHANGE PERSONNEL DETAIL**

Activity: Business Development
 Subactivity: Business Development
 Program Change: Staff Reduction

Title	Grade	Number	Annual Salary	Total Salaries
Various	Various	(126)	99,109.7	(12,487,823)
Total		(126)		(12,487,823)
Less lapse	25.00%	0		0
Total full-time permanent (FTE)		(126)		(12,487,823)
2018 Pay Adjustment (1.9%)				(177,951)
				(12,665,775)
 Personnel Data				
Full-time Equivalent Employment				
Full-time permanent		(126)		
Other than full-time permanent		0		
Total		(126)		
 Authorized Positions:				
Full-time permanent		(126)		
Other than full-time permanent		0		
Total		(126)		

[THIS PAGE INTENTIONALLY LEFT BLANK]

**Department of Commerce
Economic Development Administration
Salaries and Expenses**

PROGRAM CHANGE DETAIL BY OBJECT CLASS

(Direct Obligations amounts in thousands)

Activity: Operations
Subactivity: Operations

	<u>Object Class</u>	<u>2019 Increase/Decrease</u>
11.1	Full-time permanent (Compensation)	(12,674)
11.3	Other than full-time permanent	0
11.5	Other personnel compensation	779
11.9	Total personnel compensation	(11,895)
12.1	Civilian personnel benefits	(3,529)
21	Travel and transportation of persons	(801)
22	Transportation of things	(7)
23	Rent, communications, and utilities	
23.1	Rental payments to GSA	(2,175)
23.2	Rental payments to others	(269)
23.3	Communications, utilities and miscellaneous charges	(256)
24	Printing and reproduction	(9)
25	Other contractual services	
25.2	Other services from non-Federal sources	(1,819)
25.3	Other goods and services from Federal sources	(520)
25.7	Operations and maintenance of equipment	0
26	Supplies and materials	(39)
31	Equipment	0
43	Interest and Dividends	0
44	Refunds	0
99.9	Total obligations	(21,321)

[THIS PAGE INTENTIONALLY LEFT BLANK]

**Department of Commerce
Economic Development Administration
Salaries and Expenses**

SUMMARY OF REQUIREMENTS BY OBJECT CLASS

(Dollar amounts in thousands)

Object Class	2017 Actual	2018 Annualized CR	2019 Base	2019 Estimate	Increase/Decrease from 2019 Base
11.1 Full-time permanent	19,110	19,110	19,203	6,519	(12,683)
11.5 Other personnel compensation	338	338	338	1,117	779
11.9 Total personnel compensation	19,448	19,448	19,541	7,636	(11,904)
12.1 Civilian personnel benefits	6,256	5,992	5,991	2,462	(3,529)
21 Travel and transportation of persons	1,063	1,063	1,066	265	(801)
22 Transportation of things	12	12	12	5	(7)
23 Rent, communications and utilities					
23.1 Rental payments to GSA	2,672	2,672	2,690	515	(2,175)
23.2 Rental payments to others	331	331	334	64	(269)
23.3 Communications, utilities and misc. charges	416	416	416	159	(256)
24.0 Printing and reproduction	10	10	10	1	(9)
25 Other contractual services					
25.2 Other services from non-Federal sources	2,773	2,773	2,819	1,007	(1,811)
25.3 Other goods and services from Federal sources	5,912	5,912	3,272	2,752	(520)
25.7 Operations and maintenance of equipment	0	0	0	0	0
26 Supplies and materials	107	107	108	69	(39)
31 Equipment	0	0	0	0	0
99.9 Total Obligations	39,000	38,735	36,258	14,937	(21,321)
Less prior year recoveries	0	0	0	0	0
Less prior year unobligated balance	0	0	0	0	0
Total Budget Authority	39,000	38,735	36,258	14,937	(21,321)

Object Class	2017 Actual	2018 Annualized CR	2019 Base	2019 Estimate	Increase/Decrease from 2019 Base
Personnel Data					
Full-Time equivalent Employment:					
Full-time permanent	190	190	190	64	(126)
Other than full-time permanent	0	0	0	0	0
Total	190	190	190	64	(126)
Authorized Positions:					
Full-time permanent	184	184	184	58	(126)
Other than full-time permanent	0	0	0	0	0
Total	184	184	184	58	(126)

**Department of Commerce
Economic Development Administration
Salaries and Expenses**

JUSTIFICATION OF PROPOSED LANGUAGE CHANGES

FY 2019

This language is proposed for the orderly closedown of the Economic Development Administration and its grants and loans previously awarded.

SALARIES AND EXPENSES

For necessary expenses of the closure of the Economic Development Administration, including, but not limited to, ongoing administration, oversight and monitoring of grants and loans previously awarded by the Economic Development Administration, \$14,937,000.

[THIS PAGE INTENTIONALLY LEFT BLANK]

**Department of Commerce
Economic Development Administration
Salaries and Expenses
APPROPRIATION LANGUAGE AND CODE CITATIONS**

FY 2019

Salaries and Expenses

1 For necessary expenses of administering the economic development assistance programs as provided for by law,

42 U.S.C. 3214(c), 3231

42 U.S.C. 3214(c) - Authorizes the transfer of appropriated funds from other Federal agencies, if such funds are used for the purpose for which (and in accordance with the terms under which) the funds are specifically authorized and appropriated.

42 U.S.C. 3231 - Authorizes funds to be appropriated for economic development assistance programs to carry out 42 U.S.C. 3121 et seq., through fiscal year 2008, to remain available until expended.

2 Authorization of appropriations for defense conversion activities,

42 U.S.C. 3232

42 U.S.C. 3232(a) - In addition to amounts made available under section 3231 of this title, there are authorized to be appropriated such sums as are necessary to carry out section 3149(c)(1) of this title, to remain available until expended.

42 U.S.C. 3232(b) - Funds made available under subsection (a) of this section may be used for activities including pilot projects for privatization of, and economic development activities for, closed or realigned military or Department of Energy installations.

3 Authorization of appropriations for disaster economic recovery activities,

42. U.S.C. 3233

42. U.S.C. 3233(a) - In addition to amounts made available under section 3231 of this title, there are authorized to be appropriated such sums as are necessary to carry out section 3149(c)(2) of this title, to remain available until expended.

42. U.S.C. 3233(b) - The Federal share of the cost of activities funded with amounts made available under subsection (a) of this section shall be up to 100 percent.

4 Funding for grants for planning and grants for administrative expenses,

42 U.S.C. 3234

Of the amounts made available under section 3231 of this title for each fiscal year, not less than \$27,000,000 shall be made available for grants provided under section 3143 of this title.

5 Provided, that these funds may be used to monitor projects approved pursuant to title I of the Public Works Employment Act of 1976, as amended,

42 U.S.C. 6710

42 U.S.C. 6710 - Authorized appropriations for the administration of the Local Public Works Capital Development and Investment Act of 1976.

6 Title II of the Trade Act of 1974, as amended, and

19 U.S.C. 2345 - Authorizes appropriations to carry out Trade Adjustment Assistance for Firms (TAAF).

Public Law No: 114-27, Trade Preferences Extension Act of 2015. Title IV of that Act, entitled the "Trade Adjustment Assistance Reauthorization Act of 2015" extends the authorization of appropriations for TAAF through fiscal year 2021.

7 The Community Emergency Drought Relief Act of 1977 (including monitoring and close out),

42 U.S.C. 5184 note

42 U.S.C. 5184 note - Authorized appropriations to carry out those provisions of the Community Emergency Drought Relief Act of 1977.

8 For section 27 of the Stevenson-Wydler Technology Innovation Act of 1980 (15 U.S.C. 3722).

**Department of Commerce
Economic Development Administration
Salaries and Expenses**

PERIODICALS, PAMPHLETS, AND AUDIOVISUAL PRODUCTS

	2016 Actuals	2017 Actual	2018 Annualized CR	2019 Estimate
Pamphlets	11.0	10.0	10.2	1.0
Total	11.0	10.0	10.2	1.0

Economic Development Administration (EDA) publications include the EDA Annual Report and a booklet to educate the Economic Development Districts, local and State government, stakeholders on their grant and loan responsibilities as EDA closes down.

[THIS PAGE INTENTIONALLY LEFT BLANK]

**Department of Commerce
Economic Development Administration
Salaries and Expenses
AVERAGE GRADE AND SALARIES**

	2017 Actual	2018 Annualized CR	2019 Estimate
Average ES Grade			
Average GS Grade	13	13.1	13.2
Average GS Salary	119.7	125.8	127.0

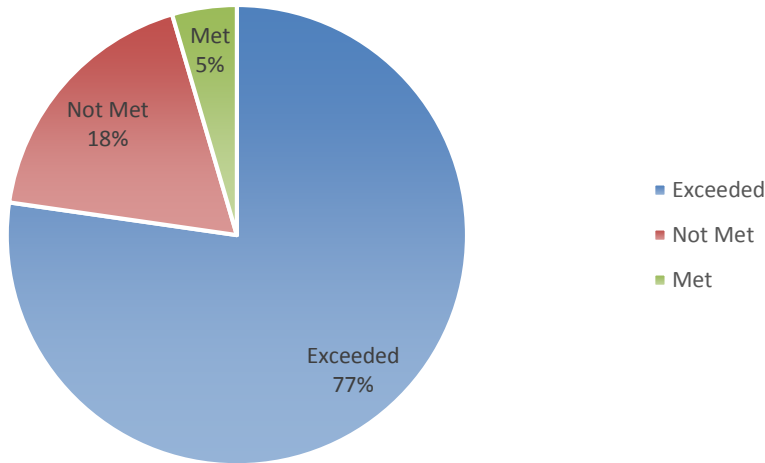
[THIS PAGE INTENTIONALLY LEFT BLANK]

FY 2019 ANNUAL PERFORMANCE PLAN / FY 2017 ANNUAL PERFORMANCE REPORT
(Economic Development Administration)

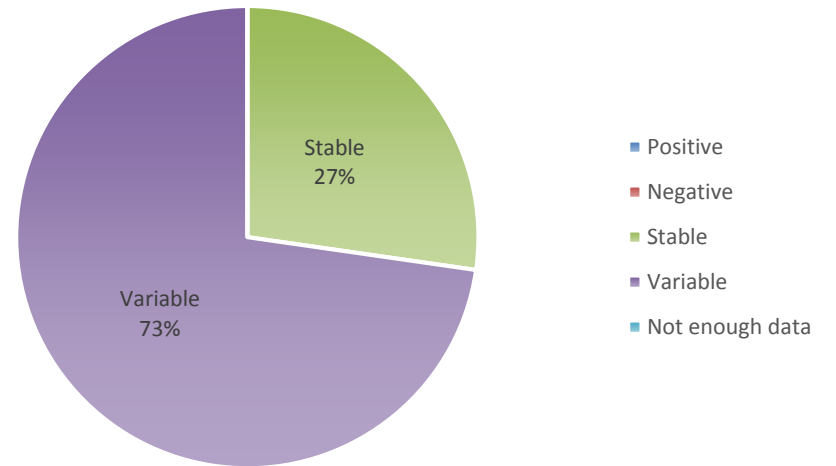
Performance Indicator Information

Summary of Indicator Performance

Status of FY 2017 Indicators



Actual Trends of Indicators



- Of EDA's 22 total FY 2017 Strategic Plan and GPRA Goals 1 & 2 indicators, 17 were Exceeded (77%), 1 was Met (5%), and 4 were Not Met (18%).
- Of 22 indicators, 22 had trends.
- Of EDA's 22 total FY 2017 Strategic Plan and GPRA Goals 1 & 2 indicators, 6 (27%) are Stable and 16 (73%) are Variable.

Summary of FY 2017 Indicator Performance

Indicator Name	Target	Actual	Status	Trend
Jobs Created/Retained - 9 year totals	31,280	27,029	Not Met	Varying
Jobs Created/Retained - 6 year totals	13,392	18,114	Exceeded	Varying
Jobs Created/Retained - 3 year totals	4,037	5,510	Exceeded	Varying
Private Investment Leveraged - 9 year totals (in millions)	\$1,223	\$4,233	Exceeded	Varying
Private Investment Leveraged - 6 year totals (in millions)	\$561	\$199	Not Met	Varying
Private Investment Leveraged - 3 year totals (in millions)	\$176	\$793	Exceeded	Varying
Percentage of Economic Development District (EDD) and Indian Tribes implementing economic development projects from the Comprehensive Economic Development Strategy (CEDS) that lead to private investment and jobs.	95.0%	73.4%	Not Met	Stable
Percentage of sub-state jurisdiction members actively participating in the Economic Development District (EDD) program.	89.0%	91.9%	Exceeded	Stable
Percentage of University Center Clients Taking Action as a Result of the Assistance Facilitated by the University Center (UC).	75.0%	93.7%	Exceeded	Stable
Percentage of Those Actions Taken by University Center (UC) Clients that Achieved the Expected Results.	83.0%	89.4%	Exceeded	Stable
Percentage of Trade Adjustment Assistance Center (TAAC) clients taking action as a result of the assistance facilitated by the TAAC.	90.0%	81.4%	Met	Stable
Percentage of those actions taken by TAAC clients that achieved the expected results.	95.0%	96.7%	Exceeded	Stable
Number of grants that support place-based export strategies	53	76	Exceeded	Varying
Dollar amount of grants that support place-based export strategies	\$61.1	\$85.1	Exceeded	Varying
Recipient-estimated number of jobs generated as a result of grants that support inward investment	3,907	9,766	Exceeded	Varying
Recipient-estimated dollar amount of private investment generated as a result of grants that support inward investment	\$1,300.0	\$4,295.5	Exceeded	Varying
Recipient-estimated number of jobs generated as a result of infrastructure for industry-driven skills training	4,506	6,024	Exceeded	Varying
Recipient-estimated dollar amount of private investment generated as a result of infrastructure for industry-driven skills training	\$157.5	\$70.4	Not Met	Varying
Number of grants that support innovation-based capacity building activities	209	354	Exceeded	Varying
Dollar amount of grants that support innovation-based capacity-building activities	\$100.0	\$168.4	Exceeded	Varying
Number of grants that support resiliency in communities and regions	270	407	Exceeded	Varying
Dollar amount of grants that support resiliency in communities and regions	\$71.2	\$97.1	Exceeded	Varying

Detailed Indicator Plans and Performance

Current / Recurring Indicators

Indicator	Jobs Created/Retained - 9 year totals							
Category	Supporting (Non-Strategic Plan)							
Type	Output							
Description	The formula-driven calculation projects investment data at 3, 6, and 9 year intervals from the investment award. The formula is based on a study done by Rutgers University, which compiled and analyzed the performance of EDA construction investments after 9 years. This approach was reviewed and validated by third-party analysis conducted by Grant Thornton in 2008. Based on this formula and a review of EDA's historical results, EDA estimates that 40% of the 9-year projection would be realized after 3 years, 75% after 6 years, and 100% after 9 years.							
	FY 2012	FY 2013	FY 2014	FY 2015	FY 2016	FY 2017	FY 2018	FY 2019
Target	45,800	44,853	36,386	35,097	33,141	31,280	55,915	31,667
Actual	12,675	33,088	33,822	57,907	21,252	27,029		
Status	Not Met	Not Met	Met	Exceeded	Not Met	Not Met		
Trend	Variable							
Explanation (if not met in FY 2017)	EDA strives to encourage local economic development organizations to align their grant applications with DOC's Strategic Plan priorities; however, EDA grants support locally-driven economic development efforts. As a result, despite EDA leading a wide variety of prioritization, training, and outreach efforts to encourage alignment, in any given year the quantity or impact of local economic development organization grants pertaining to a given DOC Strategic Plan priority are subject to fluctuate relative to targeted expectations. These fluctuations are primarily due to local economic circumstances.							
Actions to be taken / Future Plans	None							
Adjustments to targets	Note that EDA's targets are calculated as the best estimate of future performance, based on prior performance and the most up-to-date data available. For a variety of reasons, including dynamic local economic circumstances, programmatic initiatives, and ongoing target calibration, the calculated targets are subject to fluctuate from one year to the next.							
Notes	None							
Information Gaps	None							

Indicator	Jobs Created/Retained - 6 year totals							
Category	Supporting (Non-Strategic Plan)							
Type	Output							

Description	The formula-driven calculation projects investment data at 3, 6, and 9 year intervals from the investment award. The formula is based on a study done by Rutgers University, which compiled and analyzed the performance of EDA construction investments after 9 years. This approach was reviewed and validated by third-party analysis conducted by Grant Thornton in 2008. Based on this formula and a review of EDA's historical results, EDA estimates that 40% of the 9-year projection would be realized after 3 years, 75% after 6 years, and 100% after 9 years.							
	FY 2012	FY 2013	FY 2014	FY 2015	FY 2016	FY 2017	FY 2018	FY 2019
Target	17,548	16,570	15,640	27,958	15,834	13,392	12,348	9,082
Actual	36,046	12,685	12,486	19,526	24,101	18,114		
Status	Exceeded	Not Met	Not Met	Not Met	Exceeded	Exceeded		
Trend	Variable							
Explanation (if not met in FY 2017)	Not applicable							
Actions to be taken / Future Plans	None							
Adjustments to targets	Note that EDA's targets are calculated as the best estimate of future performance, based on prior performance and the most up-to-date data available. For a variety of reasons, including dynamic local economic circumstances, programmatic initiatives, and ongoing target calibration, the calculated targets are subject to fluctuate from one year to the next.							
Notes	None							
Information Gaps	None							

Indicator	Jobs Created/Retained - 3 year totals							
Category	Supporting (Non-Strategic Plan)							
Type	Output							
Description	The formula-driven calculation projects investment data at 3, 6, and 9 year intervals from the investment award. The formula is based on a study done by Rutgers University, which compiled and analyzed the performance of EDA construction investments after 9 years. This approach was reviewed and validated by third-party analysis conducted by Grant Thornton in 2008. Based on this formula and a review of EDA's historical results, EDA estimates that 40% of the 9-year projection would be realized after 3 years, 75% after 6 years, and 100% after 9 years.							
	FY 2012	FY 2013	FY 2014	FY 2015	FY 2016	FY 2017	FY 2018	FY 2019
Target	11,183	6,333	5,357	4,939	3,633	4,037	7,322	7,779
Actual	6,040	13,576	6,538	12,151	4,109	5,510		
Status	Not Met	Exceeded	Exceeded	Exceeded	Exceeded	Exceeded		

Trend	Variable
Explanation (if not met in FY 2017)	Not applicable
Actions to be taken / Future Plans	None
Adjustments to targets	None
Notes	None
Information Gaps	None

Indicator	Private Investment Leveraged - 9 year totals (in millions)							
Category	Supporting (Non-Strategic Plan)							
Type	Output							
Description	The formula-driven calculation projects investment data at 3, 6, and 9 year intervals from the investment award. The formula is based on a study done by Rutgers University, which compiled and analyzed the performance of EDA construction investments after 9 years. This approach was reviewed and validated by third-party analysis conducted by Grant Thornton in 2008. Based on this formula and a review of EDA's historical results, EDA estimates that 40% of the 9-year projection would be realized after 3 years, 75% after 6 years, and 100% after 9 years.							
	FY 2012	FY 2013	FY 2014	FY 2015	FY 2016	FY 2017	FY 2018	FY 2019
Target (\$M)	\$1,620	\$1,637	\$1,349	\$1,324	\$1,293	\$1,223	\$2,186	\$1,303
Actual (\$M)	\$1,593	\$3,466	\$2,958	\$3,711	\$2,783	\$4,233		
Status	Met	Exceeded	Exceeded	Exceeded	Exceeded	Exceeded		
Trend	Variable							
Explanation (if not met in FY 2017)	Not applicable							
Actions to be taken / Future Plans	None							
Adjustments to targets	None							
Notes	For FY2017, this performance indicator includes the dollar amount of private investment measured in Strategic Objective 1.3 performance indicator "Recipient-estimated dollar amount of private investment generated as a result of grants that support inward investment" and Strategic Objective 2.3 performance indicator "Recipient-estimated dollar amount of private investment generated as a result of infrastructure for industry-driven skills training." See Non Recurring Indicators section below.							
Information Gaps	None							

Indicator	Private Investment Leveraged - 6 year totals (in millions)							
Category	Supporting (Non-Strategic Plan)							

Type	Output							
Description	The formula-driven calculation projects investment data at 3, 6, and 9 year intervals from the investment award. The formula is based on a study done by Rutgers University, which compiled and analyzed the performance of EDA construction investments after 9 years. This approach was reviewed and validated by third-party analysis conducted by Grant Thornton in 2008. Based on this formula and a review of EDA's historical results, EDA estimates that 40% of the 9-year projection would be realized after 3 years, 75% after 6 years, and 100% after 9 years.							
	FY 2012	FY 2013	FY 2014	FY 2015	FY 2016	FY 2017	FY 2018	FY 2019
Target (\$M)	\$662	\$647	\$612	\$1,093	\$652	\$561	\$525	\$391
Actual (\$M)	\$1,617	\$2,402	\$2,063	\$1,744	\$2,118	\$199		
Status	Exceeded	Exceeded	Exceeded	Exceeded	Exceeded	Not Met		
Trend	Variable							
Explanation (if not met in FY 2017)	EDA strives to encourage local economic development organizations to align their grant applications with DOC's Strategic Plan priorities; however, EDA grants support locally-driven economic development efforts. As a result, despite EDA leading a wide variety of prioritization, training, and outreach efforts to encourage alignment, in any given year the quantity or impact of local economic development organization grants pertaining to a given DOC Strategic Plan priority are subject to fluctuate relative to targeted expectations. These fluctuations are primarily due to local economic circumstances.							
Actions to be taken / Future Plans	None							
Adjustments to targets	None							
Notes	For FY2017, this performance indicator includes the dollar amount of private investment measured in Strategic Objective 1.3 performance indicator "Recipient-estimated dollar amount of private investment generated as a result of grants that support inward investment" and Strategic Objective 2.3 performance indicator "Recipient-estimated dollar amount of private investment generated as a result of infrastructure for industry-driven skills training." See Non Recurring Indicators section below.							
Information Gaps	None							

Indicator	Private Investment Leveraged - 3 year totals (in millions)
Category	Supporting (Non-Strategic Plan)
Type	Output

Description	The formula-driven calculation projects investment data at 3, 6, and 9 year intervals from the investment award. The formula is based on a study done by Rutgers University, which compiled and analyzed the performance of EDA construction investments after 9 years. This approach was reviewed and validated by third-party analysis conducted by Grant Thornton in 2008. Based on this formula and a review of EDA's historical results, EDA estimates that 40% of the 9-year projection would be realized after 3 years, 75% after 6 years, and 100% after 9 years.							
	FY 2012	FY 2013	FY 2014	FY 2015	FY 2016	FY 2017	FY 2018	FY 2019
Target (\$M)	\$437	\$261	\$224	\$210	\$156	\$176	\$323	\$346
Actual (\$M)	\$837	\$1,076	\$951	\$2,075	\$407	\$793		
Status	Exceeded	Exceeded	Exceeded	Exceeded	Exceeded	Exceeded		
Trend	Variable							
Explanation (if not met in FY 2017)	Not applicable							
Actions to be taken / Future Plans	None							
Adjustments to targets	None							
Notes	For FY2017, this performance indicator includes the dollar amount of private investment measured in Strategic Objective 1.3 performance indicator "Recipient-estimated dollar amount of private investment generated as a result of grants that support inward investment" and Strategic Objective 2.3 performance indicator "Recipient-estimated dollar amount of private investment generated as a result of infrastructure for industry-driven skills training." See Non Recurring Indicators section below.							
Information Gaps	None							

Indicator	Percentage of Economic Development District (EDD) and Indian Tribes implementing economic development projects from the Comprehensive Economic Development Strategy (CEDS) that lead to private investment and jobs.							
Category	Supporting (Non-Strategic Plan)							
Type	Output							
Description	This measure provides an indication of whether the CEDS process is market based and whether EDA is helping to create an environment conducive to the creation and retention of higher skill, higher wage jobs. Research conducted on FY 2002 data established a baseline measure for subsequent years.							
	FY 2012	FY 2013	FY 2014	FY 2015	FY 2016	FY 2017	FY 2018	FY 2019
Target	95.0%	95.0%	95.0%	95.0%	95.0%	95.0%	95.0%	95.0%
Actual	90.0%	89.2%	92.4%	84.0%	80.0%	73.4%		
Status	Met	Met	Met	Not Met	Not Met	Not Met		
Trend	Stable							

Explanation (if not met in FY 2017)	EDA strives to encourage local economic development organizations to align their grant applications with DOC's Strategic Plan priorities; however, EDA grants support locally-driven economic development efforts. As a result, despite EDA leading a wide variety of prioritization, training, and outreach efforts to encourage alignment, in any given year the quantity or impact of local economic development organization grants pertaining to a given DOC Strategic Plan priority are subject to fluctuate relative to targeted expectations. These fluctuations are primarily due to local economic circumstances.
Actions to be taken / Future Plans	None
Adjustments to targets	None
Notes	None
Information Gaps	None

Indicator	Percentage of sub-state jurisdiction members actively participating in the Economic Development District (EDD) program.							
Category	Supporting (Non-Strategic Plan)							
Type	Output							
Description	EDDs generally consist of three or more counties that are considered member jurisdictions. Sub-state jurisdiction participation indicates the District's responsiveness to the area it serves and shows that the services it provides are of value. Active participation was defined as either attendance at meetings or financial support of the EDD during the reporting period. Sub-state jurisdiction members are independent units of government (cities, towns, villages, counties, etc.) and eligible entities substantially associated with economic development, as set forth by the District's by laws or alternate enabling document.							
	FY 2012	FY 2013	FY 2014	FY 2015	FY 2016	FY 2017	FY 2018	FY 2019
Target	89.0%	89.0%	89.0%	89.0%	89.0%	89.0%	89.0%	89.0%
Actual	87.0%	83.7%	80.3%	85.3%	86.2%	91.9%		
Status	Met	Met	Met	Met	Met	Exceeded		
Trend	Stable							
Explanation (if not met in FY 2017)	Not applicable							
Actions to be taken / Future Plans	None							
Adjustments to targets	None							
Notes	None							
Information Gaps	None							

Indicator	Percentage of University Center Clients Taking Action as a Result of the Assistance Facilitated by the University Center (UC).							
Category	Supporting (Non-Strategic Plan)							
Type	Output							
Description	This measure determines the perceived value added by the UCs to their clients. EDA funds UCs to provide technical assistance and specialized services (for example, feasibility studies, marketing research, economic analysis, environmental services, and technology transfer) to local officials and communities. This assistance improves the community's capacity to plan and manage successful development projects. UCs develop client profiles and report findings to EDA, which evaluates the performance of each center once every 3 years and verifies the data. "Taking action as a result of the assistance facilitated" means to implement an aspect of the technical assistance provided by the UC in one of several areas: economic development initiatives and training session development; linkages to crucial resources; economic development planning; project management; community investment package development; geographic information system services; strategic partnering to public or private sector entities; increased organizational capacity; feasibility plans; marketing studies; technology transfer; new company, product, or patent development; and other services.							
	FY 2012	FY 2013	FY 2014	FY 2015	FY 2016	FY 2017	FY 2018	FY 2019
Target	75.0%	75.0%	75.0%	75.0%	75.0%	75.0%	75.0%	75.0%
Actual	70.0%	65.8%	73.2%	79.0%	77.2%	93.7%		
Status	Met	Not Met	Met	Exceeded	Exceeded	Exceeded		
Trend	Stable							
Explanation (if not met in FY 2017)	Not applicable							
Actions to be taken / Future Plans	None							
Adjustments to targets	None							
Notes	None							
Information Gaps	None							

Indicator	Percentage of Those Actions Taken by University Center (UC) Clients that Achieved the Expected Results.							
Category	Supporting (Non-Strategic Plan)							
Type	Output							
Description	This measure is a follow up to the previous measure: "Percentage of UC clients taking action as a result of the assistance facilitated by the UC." This measure determines if the assistance provided by the UC is market based and results in desired outcomes. UCs develop client profiles and report to EDA, which will evaluate and verify the performance of each UC once every three years.							
	FY 2012	FY 2013	FY 2014	FY 2015	FY 2016	FY 2017	FY 2018	FY 2019
Target	80.0%	80.0%	80.0%	83.0%	83.0%	83.0%	83.0%	83.0%

Actual	82.0%	90.1%	91.7%	82.1%	90%	89.4%		
Status	Exceeded	Exceeded	Exceeded	Met	Exceeded	Exceeded		
Trend	Stable							
Explanation (if not met in FY 2017)	Not applicable							
Actions to be taken / Future Plans	None							
Adjustments to targets	None							
Notes	None							
Information Gaps	None							

Indicator	Percentage of Trade Adjustment Assistance Center (TAAC) clients taking action as a result of the assistance facilitated by the TAAC.							
Category	Supporting (Non-Strategic Plan)							
Type	Output							
Description	This measure determines the value of assistance provided by TAAC to its clients. Eleven EDA funded TAACs work with U.S. firms and industries that have been adversely impacted as a result of increased imports of similar or competitive goods to identify specific actions to improve each firm's competitive position in world markets. "Taking action as a result of the assistance facilitated" means to implement an aspect of the Trade Adjustment Assistance provided by the TAAC. The TAACs provide three main types of assistance to firms: help in preparing petitions for certification (which must be approved by EDA in order for the firm to receive technical assistance), analysis of the firm's strengths and weaknesses and development of an adjustment proposal, and in depth assistance for implementation of the recovery strategy as set forth in the adjustment proposal.							
	FY 2012	FY 2013	FY 2014	FY 2015	FY 2016	FY 2017	FY 2018	FY 2019
Target	90.0%	90.0%	90.0%	90.0%	90.0%	90.0%	90.0%	90.0%
Actual	85.0%	75.9%	77.8%	68.5%	75.7%	81.4%		
Status	Met	Not Met	Not Met	Not Met	Not Met	Met		
Trend	Stable							
Explanation (if not met in FY 2017)	Not applicable							
Actions to be taken / Future Plans	None							
Adjustments to targets	None							
Notes	None							
Information Gaps	None							

Indicator	Percentage of those actions taken by TAAC clients that achieved the expected results.							
Category	Supporting (Non-Strategic Plan)							

Type	Output							
Description	This is a follow up to the previous measure: "Percentage of TAAC clients taking action as a result of the assistance facilitated by the TAAC." This measure will determine if the assistance facilitated by the TAACs is market based and results in desired outcomes. The centers conduct client surveys and report findings to EDA.							
	FY 2012	FY 2013	FY 2014	FY 2015	FY 2016	FY 2017	FY 2018	FY 2019
Target	95.0%	95.0%	95.0%	95.0%	95.0%	95.0%	95.0%	95.0%
Actual	100.0%	100.0%	100.0%	99.5%	97.1%	96.7%		
Status	Exceeded	Exceeded	Exceeded	Exceeded	Exceeded	Exceeded		
Trend	Stable							
Explanation (if not met in FY 2017)	Not applicable							
Actions to be taken / Future Plans	None							
Adjustments to targets	None							
Notes	None							
Information Gaps	None							

Other Indicators

None

Non Recurring Indicators

Indicator	Amount of grants that support place-based export strategies							
Category	Supporting (Strategic Plan)							
Type	Input							
Description	This performance indicator measures the number of EDA grants which support place-based export strategies							
	FY 2012	FY 2013	FY 2014	FY 2015	FY 2016	FY 2017	FY 2018	FY 2019
Target			35	59	43	53	NA	NA
Actual			66	48	59	76		
Status			Exceeded	Not Met	Exceeded	Exceeded		
Trend	Variable							
Explanation (if not met in FY 2017)	Not applicable							
Actions to be taken / Future Plans	None							

Adjustments to targets	Note that EDA's targets are calculated as the best estimate of future performance, based on prior performance and the most up-to-date data available. For a variety of reasons, including dynamic local economic circumstances, programmatic initiatives, and ongoing target calibration, the calculated targets are subject to fluctuate from one year to the next.
Notes	None
Information Gaps	None

Indicator	Dollar amount of grants that support place-based export strategies							
Category	Supporting (Strategic Plan)							
Type	Input							
Description	This performance indicator measures the dollar amount of EDA grants which support place-based export strategies							
	FY 2012	FY 2013	FY 2014	FY 2015	FY 2016	FY 2017	FY 2018	FY 2019
Target (\$M)			\$30.0	\$53.4	\$59.2	\$61.0	NA	NA
Actual (\$M)			\$59.3	\$65.8	\$67.8	\$85.1		
Status			Exceeded	Exceeded	Exceeded	Exceeded		
Trend	Variable							
Explanation (if not met in FY 2017)	Not applicable							
Actions to be taken / Future Plans	None							
Adjustments to targets	Note that EDA's targets are calculated as the best estimate of future performance, based on prior performance and the most up-to-date data available. For a variety of reasons, including dynamic local economic circumstances, programmatic initiatives, and ongoing target calibration, the calculated targets are subject to fluctuate from one year to the next.							
Notes	None							
Information Gaps	None							

Indicator	Recipient-estimated number of jobs generated as a result of grants that support inward investment							
Category	Key							
Type	Output							
Description	This performance indicator measures the recipient-estimated number of jobs generated as a result of EDA grants which support foreign direct investment							

	FY 2012	FY 2013	FY 2014	FY 2015	FY 2016	FY 2017	FY 2018	FY 2019
Target			4,020	4,516	6,809	3,907	NA	NA
Actual			5,018	7,566	4,341	9,766		
Status			Exceeded	Exceeded	Not Met	Exceeded		
Trend	Variable							
Explanation (if not met in FY 2017)	Not applicable							
Actions to be taken / Future Plans	None							
Adjustments to targets	Note that EDA's targets are calculated as the best estimate of future performance, based on prior performance and the most up-to-date data available. For a variety of reasons, including dynamic local economic circumstances, programmatic initiatives, and ongoing target calibration, the calculated targets are subject to fluctuate from one year to the next.							
Notes	None							
Information Gaps	None							

Indicator	Recipient-estimated dollar amount of private investment generated as a result of grants that support inward investment							
Category	Key							
Type	Output							
Description	This performance indicator measures the recipient-estimated dollar amount of EDA grants which support foreign direct investment							
	FY 2012	FY 2013	FY 2014	FY 2015	FY 2016	FY 2017	FY 2018	FY 2019
Target (\$M)			\$176.0	\$2,600.0	\$1,100.0	\$1,300.0	NA	NA
Actual (\$M)			\$2,800.0	\$1,264.0	\$1,400.0	\$4,295.47		
Status			Exceeded	Not Met	Exceeded	Exceeded		
Trend	Variable							
Explanation (if not met in FY 2017)	Not applicable							
Actions to be taken / Future Plans	None							
Adjustments to targets	Note that EDA's targets are calculated as the best estimate of future performance, based on prior performance and the most up-to-date data available. For a variety of reasons, including dynamic local economic circumstances, programmatic initiatives, and ongoing target calibration, the calculated targets are subject to fluctuate from one year to the next.							
Notes	None							
Information Gaps	None							

Indicator	Recipient-estimated number of jobs generated as a result of infrastructure for industry-driven skills training							
Category	Supporting (Strategic Plan)							
Type	Output							
Description	This performance indicator measures the recipient-estimated number of jobs generated as a result of EDA grants supporting infrastructure for industry-driven skills training							
	FY 2012	FY 2013	FY 2014	FY 2015	FY 2016	FY 2017	FY 2018	FY 2019
Target			3,500	2,588	8,822	4,506	NA	NA
Actual			2,876	9,802	5,007	6,024		
Status			Not Met	Exceeded	Not Met	Exceeded		
Trend	Variable							
Explanation (if not met in FY 2017)	Not applicable							
Actions to be taken / Future Plans	None							
Adjustments to targets	Note that EDA's targets are calculated as the best estimate of future performance, based on prior performance and the most up-to-date data available. For a variety of reasons, including dynamic local economic circumstances, programmatic initiatives, and ongoing target calibration, the calculated targets are subject to fluctuate from one year to the next.							
Notes	None							
Information Gaps	None							

Indicator	Recipient-estimated dollar amount of private investment generated as a result of infrastructure for industry-driven skills training							
Category	Supporting (Strategic Plan)							
Type	Output							
Description	This performance indicator measures the recipient-estimated dollar amount of private investment generated as a result of EDA grants supporting infrastructure for industry-driven skills training							
	FY 2012	FY 2013	FY 2014	FY 2015	FY 2016	FY 2017	FY 2018	FY 2019
Target (\$M)			\$155.0	\$484.9	\$534.1	\$157.4	NA	NA
Actual (\$M)			\$538.7	\$593.4	\$174.9	\$70.39		
Status			Exceeded	Exceeded	Not Met	Not Met		
Trend	Variable							
Explanation (if not met in FY 2017)	EDA strives to encourage local economic development organizations to align their grant applications with DOC's Strategic Plan priorities; however, EDA grants support locally-driven economic development efforts. As a result, despite EDA leading a wide variety of prioritization, training, and outreach efforts to encourage alignment, in any given year the quantity or impact of local economic development organization grants pertaining to a given DOC Strategic Plan priority are subject to fluctuate relative to targeted							

	expectations. These fluctuations are primarily due to local economic circumstances. There were either fewer competitive, impactful regionally-driven economic development projects that supported this priority or EDA received projects that were more impactful/beneficial and addressed any of the many other DOC/EDA priorities.
Actions to be taken / Future Plans	None
Adjustments to targets	Note that EDA's targets are calculated as the best estimate of future performance, based on prior performance and the most up-to-date data available. For a variety of reasons, including dynamic local economic circumstances, programmatic initiatives, and ongoing target calibration, the calculated targets are subject to fluctuate from one year to the next. The decrease in the target amount from FY 2016 to FY 2017 is due to the decrease in actual amounts in FY 2016.
Notes	None
Information Gaps	None

Indicator	Number of grants that support innovation-based capacity-building activities							
Category	Key							
Type	Input							
Description	This performance indicator measures the number of EDA grants supporting innovation-based capacity-building activities							
	FY 2012	FY 2013	FY 2014	FY 2015	FY 2016	FY 2017	FY 2018	FY 2019
Target			200	169	173	209	NA	NA
Actual			188	192	232	354		
Status			Met	Exceeded	Exceeded	Exceeded		
Trend	Variable							
Explanation (if not met in FY 2017)	Not applicable							
Actions to be taken / Future Plans	None							
Adjustments to targets	None							
Notes	None							
Information Gaps	None							

Indicator	Dollar amount of grants that support innovation-based capacity-building activities							
Category	Key							
Type	Input							

Description	This performance indicator measures the dollar amount of EDA grants supporting innovation-based capacity-building activities							
	FY 2012	FY 2013	FY 2014	FY 2015	FY 2016	FY 2017	FY 2018	FY 2019
Target (\$M)			\$95.0	\$101.2	\$107.6	\$100.0	NA	NA
Actual (\$M)			\$112.4	\$119.5	\$111.1	\$168.36		
Status			Exceeded	Exceeded	Exceeded	Exceeded		
Trend	Variable							
Explanation (if not met in FY 2017)	Not applicable							
Actions to be taken / Future Plans	None							
Adjustments to targets	None							
Notes	None							
Information Gaps	None							

Indicator	Number of grants that support resiliency in communities and regions							
Category	Supporting (Strategic Plan)							
Type	Input							
Description	This performance indicator measures the number of EDA grants supporting resiliency in communities and regions							
	FY 2012	FY 2013	FY 2014	FY 2015	FY 2016	FY 2017	FY 2018	FY 2019
Target			12	97	192	270	NA	NA
Actual			108	213	300	407		
Status			Exceeded	Exceeded	Exceeded	Exceeded		
Trend	Variable							
Explanation (if not met in FY 2017)	Not applicable							
Actions to be taken / Future Plans	None							
Adjustments to targets	Note that EDA's targets are calculated as the best estimate of future performance, based on prior performance and the most up-to-date data available. For a variety of reasons, including dynamic local economic circumstances, programmatic initiatives, and ongoing target calibration, the calculated targets are subject to fluctuate from one year to the next.							
Notes	None							
Information Gaps	None							

Indicator	Dollar amount of grants that support resiliency in communities and regions							
Category	Supporting (Strategic Plan)							
Type	Input							
Description	This performance indicator measures the dollar amount of EDA grants supporting resiliency in communities and regions							
	FY 2012	FY 2013	FY 2014	FY 2015	FY 2016	FY 2017	FY 2018	FY 2019
Target (\$M)			\$14.0	\$47.4	\$57.4	\$71.3	NA	NA
Actual (\$M)			\$52.6	\$63.7	\$79.2	\$97.08		
Status			Exceeded	Exceeded	Exceeded	Exceeded		
Trend	Variable							
Explanation (if not met in FY 2017)	Not applicable							
Actions to be taken / Future Plans	None							
Adjustments to targets	None							
Notes	None							
Information Gaps	None							

Proposed New Indicators

Indicator	Number of economic development grants made to communities and regions to help build the capacity to support the manufacturing-related activities and needs of businesses.							
Category	Supporting (Strategic Plan)							
Type	Input							
Description	This performance indicator measures the number of EDA grants made to communities and regions to help build the capacity to support the manufacturing-related activities and needs of businesses.							
	FY 2017	FY 2018	FY 2019					
Target	NA	98	0					
Actual	109	NA	NA					
Status	NA	NA	NA					
Trend	TBD							
Explanation (if not met in FY 2017)	Not applicable							
Actions to be taken / Future Plans	None							

Adjustments to targets	<p>EDA is not requesting grant funding for FY 2019 and will conduct the orderly closure of its operations. As such, EDA has not established performance targets for FY 2019.</p> <p>Note that EDA's targets are calculated as the best estimate of future performance, based on prior performance and the most up-to-date data available. For a variety of reasons, including dynamic local economic circumstances, programmatic initiatives, and ongoing target calibration, the calculated targets are subject to fluctuate from one year to the next.</p> <p>The indicator above was developed in accordance with the proposed FY2018-22 Strategic Plan and will be measured for the first time in FY2018. The target for FY2018 was determined based on actual results from FY2017</p>
Notes	None
Information Gaps	None

Indicator	Dollar amount of economic development grants made to communities and regions to help build the capacity to support the manufacturing-related activities and needs of businesses.						
Category	Supporting (Strategic Plan)						
Type	Input						
Description	This performance indicator measures dollar amount of EDA grants made to communities and regions to help build the capacity to support the manufacturing-related activities and needs of businesses.						
	FY 2017	FY 2018	FY 2019				
Target (\$M)	NA	\$87.6	\$0.0				
Actual (\$M)	\$97.3	NA	NA				
Status	NA	NA	NA				
Trend	TBD						
Explanation (if not met in FY 2017)	Not applicable						
Actions to be taken / Future Plans	None						
Adjustments to targets	<p>EDA is not requesting grant funding for FY 2019 and will conduct the orderly closure of its operations. As such, EDA has not established performance targets for FY 2019.</p> <p>Note that EDA's targets are calculated as the best estimate of future performance, based on prior performance and the most up-to-date data available. For a variety of reasons, including dynamic local economic circumstances, programmatic initiatives, and ongoing target calibration, the calculated targets are subject to fluctuate from one year to the next.</p>						

	The indicator above was developed in accordance with the proposed FY2018-22 Strategic Plan and will be measured for the first time in FY2018. The target for FY2018 was determined based on actual results from FY2017
Notes	None
Information Gaps	None

Indicator	Number of economic development grants made to communities and regions to help build the capacity to support the innovation-related activities and needs of businesses.							
Category	Supporting (Strategic Plan)							
Type	Input							
Description	This performance indicator measures the number of EDA grants made to communities and regions to help build the capacity to support the innovation-related activities and needs of businesses							
	FY 2017	FY 2018	FY 2019					
Target	NA	323	0					
Actual	359	NA	NA					
Status	NA							
Trend	TBD							
Explanation (if not met in FY 2017)	Not applicable							
Actions to be taken / Future Plans	None							
Adjustments to targets	<p>EDA is not requesting grant funding for FY 2019 and will conduct the orderly closure of its operations. As such, EDA has not established performance targets for 2019.</p> <p>Note that EDA's targets are calculated as the best estimate of future performance, based on prior performance and the most up-to-date data available. For a variety of reasons, including dynamic local economic circumstances, programmatic initiatives, and ongoing target calibration, the calculated targets are subject to fluctuate from one year to the next.</p> <p>The indicator above was developed in accordance with the proposed FY2018-22 Strategic Plan and will be measured for the first time in FY2018. The target for FY2018 was determined based on actual results from FY2017</p>							
Notes	None							
Information Gaps	None							

Indicator	Dollar amount of economic development grants made to communities and regions to help build the capacity to support the innovation-related activities and needs of businesses.							
Category	Supporting (Strategic Plan)							
Type	Input							
Description	This performance indicator measures the dollar amount of EDA grants made to communities and regions to help build the capacity to support the innovation-related activities and needs of businesses							
	FY 2017	FY 2018	FY 2019					
Target (\$M)	NA	\$151.2	\$0.0					
Actual (\$M)	\$168.0	NA	NA					
Status	NA	NA	NA					
Trend	TBD							
Explanation (if not met in FY 2017)	Not applicable							
Actions to be taken / Future Plans	None							
Adjustments to targets	<p>EDA is not requesting grant funding for FY 2019 and will conduct the orderly closure of its operations. As such, EDA has not established performance targets for 2019.</p> <p>Note that EDA's targets are calculated as the best estimate of future performance, based on prior performance and the most up-to-date data available. For a variety of reasons, including dynamic local economic circumstances, programmatic initiatives, and ongoing target calibration, the calculated targets are subject to fluctuate from one year to the next.</p> <p>The indicator above was developed in accordance with the proposed FY2018-22 Strategic Plan and will be measured for the first time in FY2018. The target for FY2018 was determined based on actual results from FY2017.</p>							
Notes	None							
Information Gaps	None							

Indicator	Number of economic development grants made to communities and regions to help build the capacity to support the export-related activities and needs of businesses.							
Category	Supporting (Strategic Plan)							
Type	Input							
Description	This performance indicator measures the number of EDA grants made to made to communities and regions to help build the capacity to support the export-related activities and needs of businesses.							
	FY 2017	FY 2018	FY 2019					
Target	NA	68	0					

Actual	76	NA	NA					
Status	NA	NA	NA					
Trend	TBD							
Explanation (if not met in FY 2017)	Not applicable							
Actions to be taken / Future Plans	None							
Adjustments to targets	<p>EDA is not requesting grant funding for FY 2019 and will conduct the orderly closure of its operations. As such, EDA has not established performance targets for FY 2019.</p> <p>Note that EDA's targets are calculated as the best estimate of future performance, based on prior performance and the most up-to-date data available. For a variety of reasons, including dynamic local economic circumstances, programmatic initiatives, and ongoing target calibration, the calculated targets are subject to fluctuate from one year to the next.</p> <p>The indicator above was developed in accordance with the proposed FY2018-22 Strategic Plan and will be measured for the first time in FY2018. The target for FY2018 was determined based on actual results from FY2017.</p>							
Notes	None							
Information Gaps	None							

Indicator	Dollar amount of economic development grants made to communities and regions to help build the capacity to support the export-related activities and needs of businesses.							
Category	Supporting (Strategic Plan)							
Type	Input							
Description	This performance indicator measures the dollar amount of EDA grants made to made to communities and regions to help build the capacity to support the export-related activities and needs of businesses.							
	FY 2017	FY 2018	FY 2019					
Target	NA	\$ 76.6	0					
Actual	\$85.1	NA	NA					
Status	NA	NA	NA					
Trend	TBD							
Explanation (if not met in FY 2017)	Not applicable							
Actions to be taken / Future Plans	None							
Adjustments to targets	EDA is not requesting grant funding for FY 2019 and will conduct the orderly closure of its operations. As such, EDA has not established performance targets for FY 2019.							

	<p>Note that EDA's targets are calculated as the best estimate of future performance, based on prior performance and the most up-to-date data available. For a variety of reasons, including dynamic local economic circumstances, programmatic initiatives, and ongoing target calibration, the calculated targets are subject to fluctuate from one year to the next.</p> <p>The indicator above was developed in accordance with the proposed FY2018-22 Strategic Plan and will be measured for the first time in FY2018. The target for FY2018 was determined based on actual results from FY2017.</p>
Notes	None
Information Gaps	None

Indicator	Number of economic development grants made to communities and regions to help build the capacity to attract FDI.						
Category	Supporting (Strategic Plan)						
Type	Input						
Description	This performance indicator measures the number of EDA grants which help communities and regions be better positioned for FDI.						
	FY 2017	FY 2018	FY 2019				
Target	NA	31	0				
Actual	34	NA	NA				
Status	NA	NA	NA				
Trend	TBD						
Explanation (if not met in FY 2017)	Not applicable						
Actions to be taken / Future Plans	None						
Adjustments to targets	<p>EDA is not requesting grant funding for FY 2019 and will conduct the orderly closure of its operations. As such, EDA has not established performance targets for FY 2019.</p> <p>Note that EDA's targets are calculated as the best estimate of future performance, based on prior performance and the most up-to-date data available. For a variety of reasons, including dynamic local economic circumstances, programmatic initiatives, and ongoing target calibration, the calculated targets are subject to fluctuate from one year to the next.</p> <p>The indicator above was developed in accordance with the proposed FY2018-22 Strategic Plan and will be measured for the first time in FY2018. The target for FY2018 was determined based on actual results from FY2017</p>						

Notes	None
Information Gaps	None

Indicator	Dollar amount of economic development grants made to communities and regions to help build the capacity to attract FDI.							
Category	Supporting (Strategic Plan)							
Type	Input							
Description	This performance indicator measures the dollar amount of EDA grants which help communities and regions be better positioned for FDI.							
	FY 2017	FY 2018	FY 2019					
Target (\$M)	NA	\$34.5	\$0.0					
Actual (\$M)	\$38.4	NA	NA					
Status	NA	NA	NA					
Trend	TBD							
Explanation (if not met in FY 2017)	Not applicable							
Actions to be taken / Future Plans	None							
Adjustments to targets	<p>EDA is not requesting grant funding for FY 2019 and will conduct the orderly closure of its operations. As such, EDA has not established performance targets for FY 2019.</p> <p>Note that EDA's targets are calculated as the best estimate of future performance, based on prior performance and the most up-to-date data available. For a variety of reasons, including dynamic local economic circumstances, programmatic initiatives, and ongoing target calibration, the calculated targets are subject to fluctuate from one year to the next.</p> <p>The indicator above was developed in accordance with the proposed FY2018-22 Strategic Plan and will be measured for the first time in FY2018. The target for FY2018 was determined based on actual results from FY2017.</p>							
Notes	None							
Information Gaps	None							