



BUSINESS
APPLICATIONS
SOLUTION

One Commerce

Business Applications Solution (BAS) Program - Table Talk November 2020

**UNITED STATES DEPARTMENT OF COMMERCE
OFFICE OF FINANCIAL MANAGEMENT**

November 2020



AGENDA



01

Core Applications - Global Design Outcomes and Next Steps

02

Enterprise Data Warehouse - Global Design Outcomes and Next Steps

03

Risk Management – Your Role

04

Pulse Check

Expected
Structure.
Unexpected
Flexibility.



BAS PROGRAM TABLE TALK

PRESENTERS



Andy Blumenthal
BAS Deputy PM



Angela Hang
AFS EDW Lead



Dwight Whitted
AFS EDW Team Member



Mary Beth Torpey
AFS Functional Core Financials Lead



Rakesh Ramen
BAS Risk Lead



Core Applications - Global Design Outcomes and Next Steps



BAS TABLE TALK – CORE APPLICATIONS

GLOBAL DESIGN OUTCOMES TO DRIVE COMMON SOLUTION



86

KEY DESIGN DECISIONS

- Confirmed **86** KDDs by workstream
- Identified differences among bureaus as part of workshops
- **CS Impact:** KDDs will drive CS business process recommendations which will be reviewed during Sprints.

1642

REQUIREMENTS

- Used **1642** requirements as baseline for GD
- Reviewed post-workshop to prepare for CS
- Identified a small subset (89) as requiring additional confirmation as part of CS
- **CS Impact:** At the end of each Sprint, we will review impacted requirements and submit through requirements review process.

96

BACKLOG

- From workshops, compiled a list of items to review during Common Solution
- **CS Impact:** Review any open backlog questions during Sprint sessions and drive deep dive discussions

101

EXIT CRITERIA

- Identified additional CS topics
- Established initial list of data calls to support configuration validations
- Identified **101** non-functional questions and pain points to support future discussions
- **CS Impact:** Leverage details from Exit Criteria to shape Deep Dives





BAS TABLE TALK – CORE APPLICATIONS

COMMON SOLUTION WINS TO DATE



Wonderful partnership and collaboration across different teams

Confirmed BAS Account Code Structure

DOC Ledger structure review – the foundation of the core financials

Real Property for April deployment kickstart – 9 sessions in October alone!

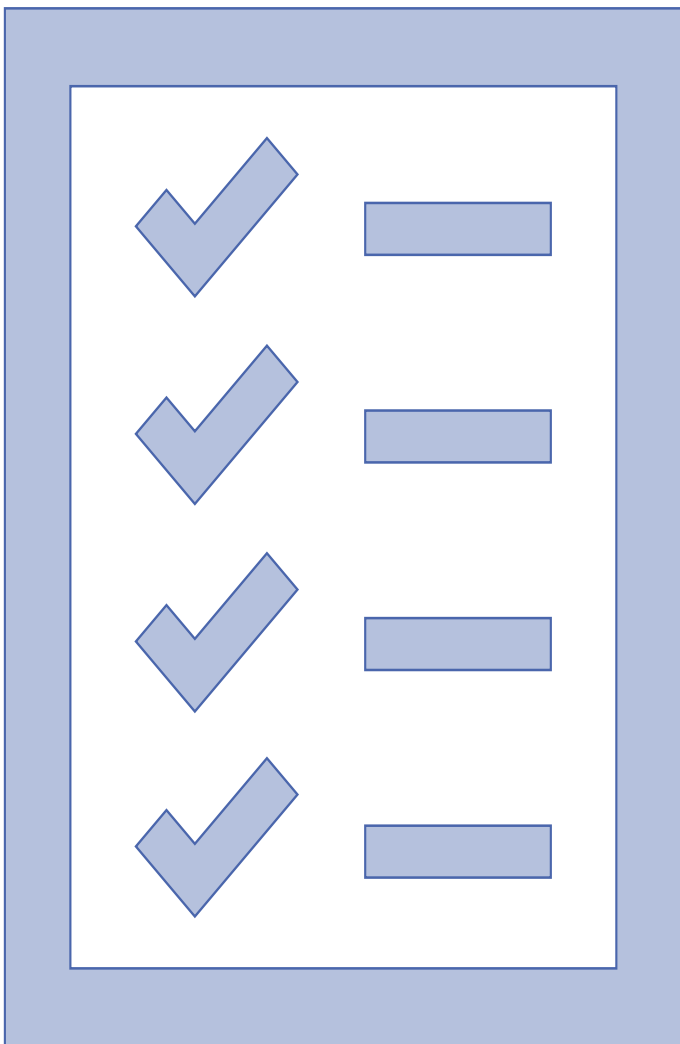
Deep dive into Advanced Acquisition Planning – tackling complex policy decisions from Month 1

20+ Deep Dive Sessions across Core Applications



BAS TABLE TALK – CORE APPLICATIONS

OBSERVATIONS, QUESTIONS, MISPERCEPTIONS, AND PAIN POINTS



- Bureau experts provide great insights into the DOC way of doing business.
- December will bring us back together to show the Configuration Validation Sessions – we will walk through business processes and transactions together. This will help us see the previous concepts discussed in Sprint 1 in the system.
- Your excitement is wonderful – we are tracking your questions and asks to support future phases e.g. training. We share those with the other work streams like the Organizational Change Management team.



BAS TABLE TALK – CORE APPLICATIONS



CS SPRINTS PER APPLICATION

SPRINT 1 FY2021 Q1

PLANNED OUTCOMES

PRISM	<ul style="list-style-type: none">Advanced Acquisition, Requisitions	<ul style="list-style-type: none">Confirmed template requirements to support Advanced Acquisition PlanningStandardized Requisition Numbering for all bureaus
EBS	<ul style="list-style-type: none">AP: Invoices, Approval Hierarchies,AR: Reimbursables, BillingGL: Ledger Overview, ACS, CVRPA: Cost Allocation, BAS Data Standardization, Object Classes, Labor Costs	<ul style="list-style-type: none">Approval Hierarchies for transactionsReimbursable and Billing Process (Pre G-Invoicing)Confirmed One LedgerDefined Account Code StructureStandardized Object Class approachCost Allocation Methodology
SF	<ul style="list-style-type: none">Real Property: Acquisition, Utilization, Finance Treatment, Disposals, Reporting / Interfaces	<ul style="list-style-type: none">FRPM to SF Real Property business process mappingRequired reports to support RPApril 2021 Go-Live Expectations
INT	<ul style="list-style-type: none">SAMPRISM – EBSSunflower – EBS	<ul style="list-style-type: none">SAM StandardizationPRISM to EBS data validations and financial impactTo-be process for Sunflower Financial Treatment



BAS TABLE TALK – CORE APPLICATIONS

WORKING TOGETHER TO ACHIEVE COMMON SOLUTION SUCCESS



OCTOBER

- Begin discussions related to policy and procedures impact
- Participate in the deep dive discussions to align configurations and business process to DOC policy requirements
- Confirm CS configurations with dedicated workshops to review policy and DOC requirements
- Perform and review initial configuration
- Discuss, review, and validate initial configuration settings and values

NOVEMBER

- Respond to data calls for Configuration Validation Sessions
- Identify process improvements and potential workarounds
- Prepare business process scenarios for system validation session / purposes to mimic real business cases
- Identify system configuration integration points
- Discuss, review, and validate transaction flow with SMEs
- Discuss and provide direction for configuration options
- Assess system roles and responsibilities and access
- Document To-Be Business Process

DECEMBER

- Work with business community members to resolve Sprint Sessions parking lot items
- Review recommended business processes during Configuration Validation Sessions
- Conduct Configuration Validation Sessions based on CS configurations and confirmed business process flows
- Perform walkthrough of system transaction flow
- Provide configuration options and alternatives to meet requirements
- Discuss and agree on configuration options
- Update Requirements Traceability Matrix

DEEP DIVE

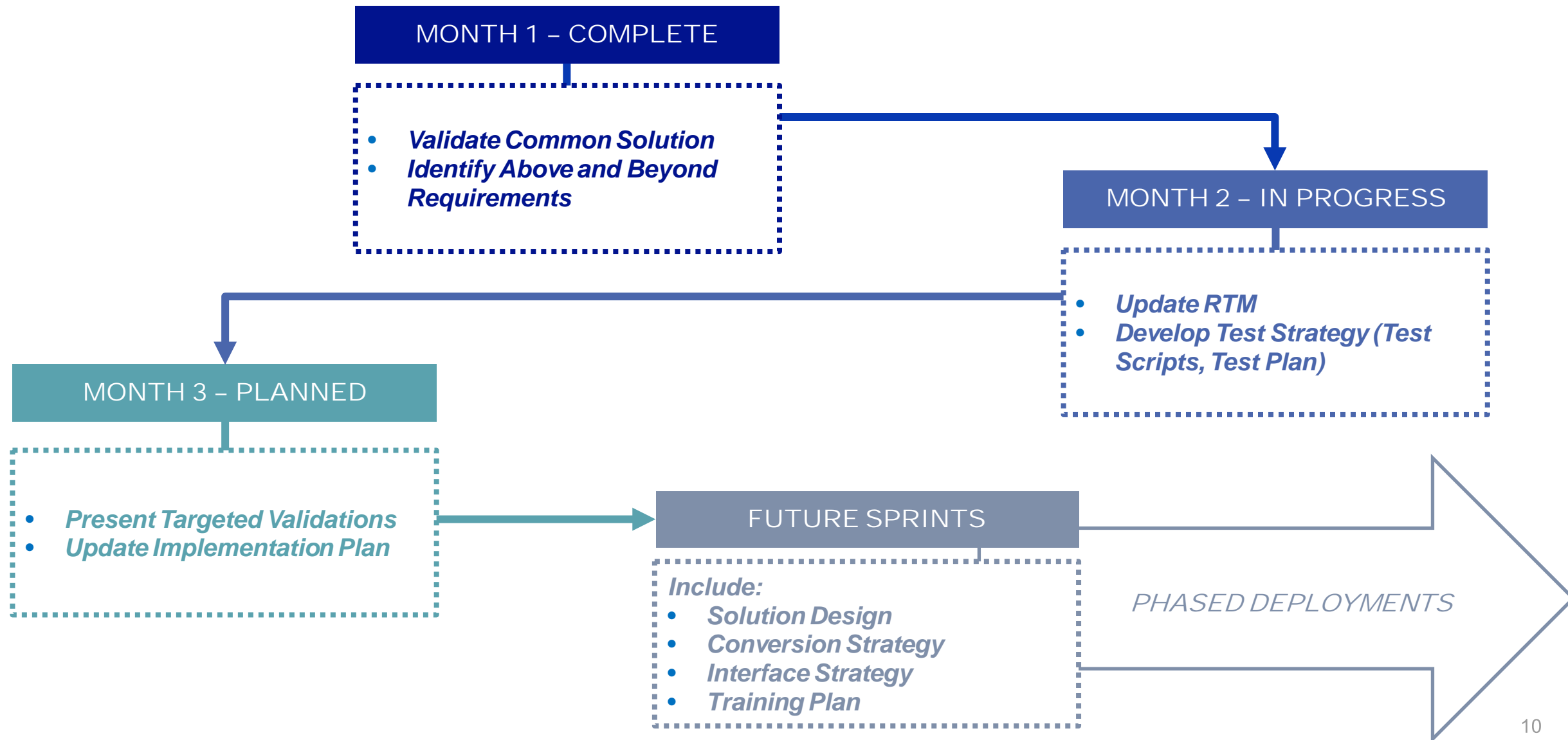
DATA CALLS

VALIDATION



BAS TABLE TALK – CORE APPLICATIONS

COMMON SOLUTION DELIVERABLE PROGRESS





Enterprise Data Warehouse - Global Design Outcomes and Next Steps



BAS TABLE TALK - EDW

GLOBAL DESIGN OUTCOMES



Objective

Provide the Department, Bureaus, Line/Lab/Program offices the tools and capabilities needed to manage their business, anchored on operating consistently as an enterprise.

- **Single standardized instance of enterprise data warehouse** - one-stop-shop for data needs – for use across the Department, Bureaus, Line/Lab/Program Offices as common ground for data and insights
- **Robust reporting tool that empowers users to build reports/dashboards the way they need it** – e.g. copy & customize, drill to detail, export, creation of team workspaces.



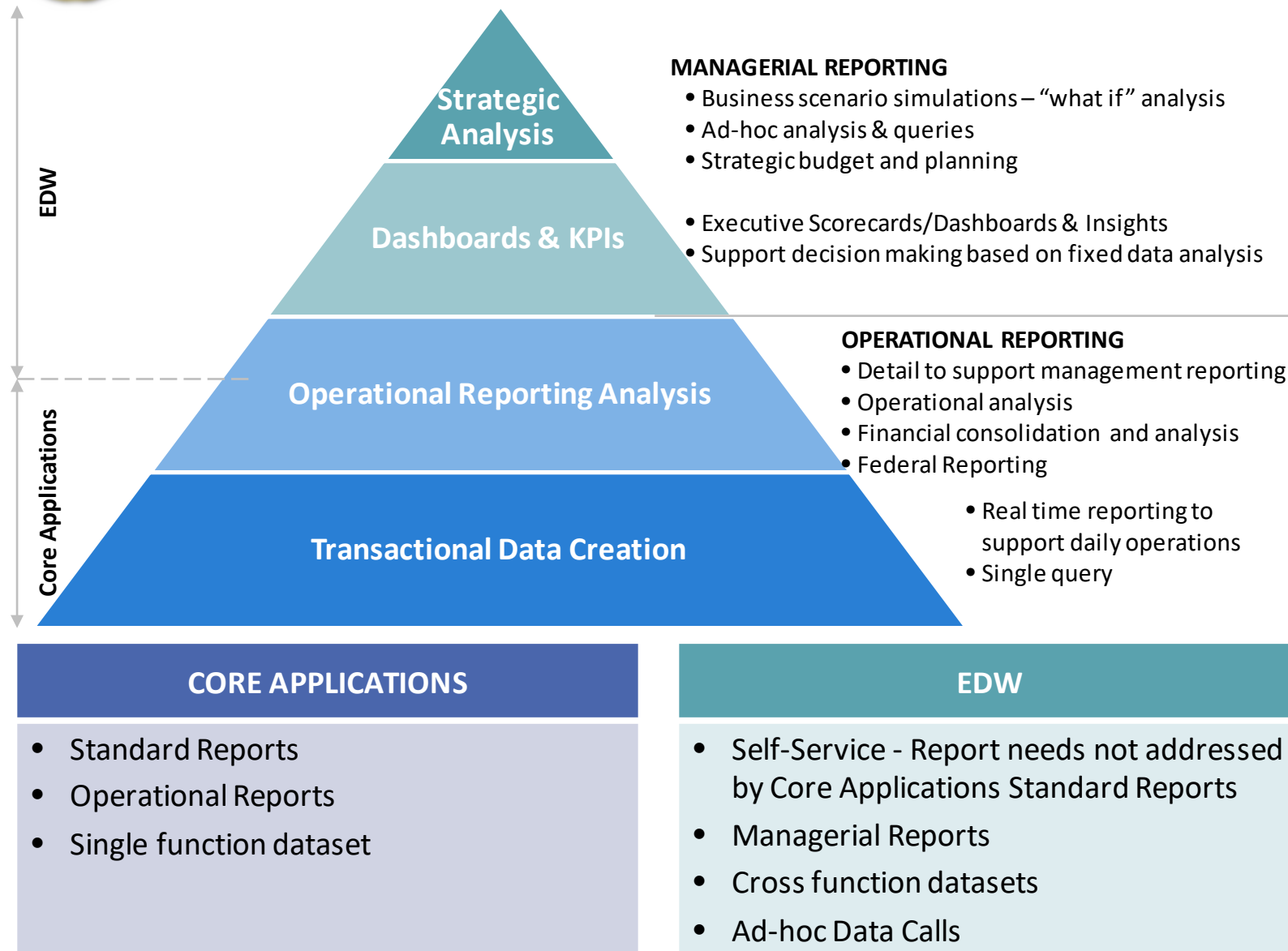
End-User Focus

- **BAS core applications offer a robust suite of operational reports** – learn about these throughout Common Solution. Additional reporting needs – operational, cross-business function, managerial – can be developed with EDW ad-hoc reporting capability. **BAS EDW will develop the data foundation** (data processes, integrated reporting tables, pre-joined datasets in the BI tool) **to support ad-hoc reporting.**
- **To drive towards operating as an enterprise, create “community focus” BI Marts organized by business function** (e.g. Finance, Budget, HR). BAS will work with each group to **identify Power Users and provide them training in how to develop and publish reports for their community.**
- The BAS program will also be developing priority **advanced analytics features** that require more complex logic and development.



BAS TABLE TALK - EDW

BAS REPORTING ARCHITECTURE



BAS Core Applications offer robust suite of reports to handle day-to-day reporting needs. Learn about these operational reports throughout Common Solution sessions.

BAS EDW will provide self-service reporting capability to support development of any other operational reporting needs. Use cases are geared towards cross-function managerial reporting and analytics.

Single entry point and single sign-on for all BAS apps through the BAS Portal.



BAS TABLE TALK - EDW

GLOBAL DESIGN OUTCOMES



Data Sources

- Prioritizing data feeds that meet cross-business function reporting objectives. Additional feeds can be added post-BAS implementation, based on need and value.
- **Early deployment of first half of data sets in FY22 Q1 to work through network connectivity and ATO.**



Retiring Current Systems

- Current financial/acquisitions/property systems data will be copied into the EDW Data Lake.
- Reviewing current reporting applications for functionality that support cross-function enterprise missions, to adopt into BAS EDW (e.g. MARS).



Architecture

- Designed for continued development of advanced BI and analytics capabilities in the future.
- Vendor hosted and managed. Fit-for-purpose tech stack – add/remove services as needed. Scale up/down on demand.



Security

- XDR for continuous security monitoring and vulnerability detection. Annual ATO review of security posture.



BAS TABLE TALK - EDW

SCOPE & SCHEDULE



	FY21 (Go-Live 10/1/21)	FY22 (Go-Live 10/1/22)	FY23 (Go-Live 10/1/23)	FY24 (Go-Live 10/1/24)	NOT IN SCOPE		
DATA	Inbound Data Ingest & Transformation into Integrated Data Model (starting from point of Go-Live; no historical data load):				<ul style="list-style-type: none">• Inbound data ingest & transformation from data sources not identified for EDW during program planning.• Conversion of current system data beyond standard core applications conversion (open transactions only)• Outbound data service to other systems for purposes redundant with BAS enterprise objectives (e.g. budget planning)• Data entry to create / update operational or reference data (e.g. updating Table of Organization)• 100% replication of current reporting systems (functionality specific to a program may persist)		
	Travel: <ul style="list-style-type: none">• E2 MIS• mLINQ	HR/Payroll: <ul style="list-style-type: none">• NFC• WebTA	Grants <ul style="list-style-type: none">• Grants Online• OPCS	<ul style="list-style-type: none">• BAS Financial• BAS Acquisition• BAS Property		<ul style="list-style-type: none">• Grants: GMIS• USPTO	
	Copy full history of Current System data into the Data Lake (data copy starts 10/1; 8 – 12 weeks pending data volume and network):						
	<ul style="list-style-type: none">• FRPM	<ul style="list-style-type: none">• NOAA CBS• NOAA C.Suite	<ul style="list-style-type: none">• NIST CBS• NIST C.Suite• OS ES C.Suite	<ul style="list-style-type: none">• Census CBS• Census C.Suite• Legacy Sunflower			
	Outbound BAS Data Service (e.g. EBS integration or EDW extract of financial data) to support out of scope functionality (e.g. custom data entry projection tool dependent on financial data)						
		<ul style="list-style-type: none">• MARS (NOAA)	<ul style="list-style-type: none">• (NIST TBD)	<ul style="list-style-type: none">• (Census TBD)			
BI REPORTING	Data universes for Community Powered BI Marts (Ad-hoc Reporting):						
		<ul style="list-style-type: none">• Program Manager• Finance• Budget• Acquisitions	<ul style="list-style-type: none">• Grants• HR• Property• Travel				
	Advanced Analytics Features						
			<ul style="list-style-type: none">• Acquisitions / Agreements 360 Dashboard	<ul style="list-style-type: none">• Spend Planning• Budget & Position Planning			
ARCHITECTURE & SECURITY							
	<ul style="list-style-type: none">• AIP Infrastructure: AWS• Security: Controls & ATO	<ul style="list-style-type: none">• AIP Infrastructure: Tableau• Security: Controls & ATO					

15

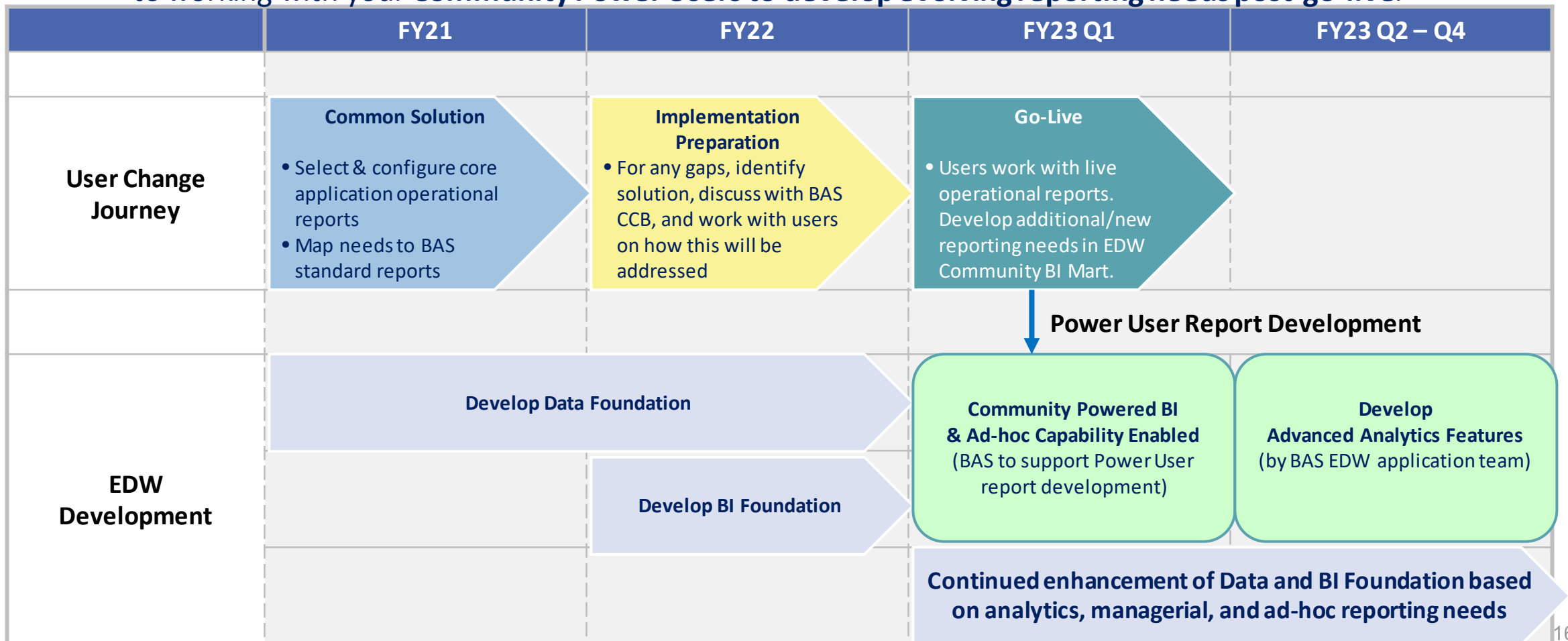


BAS TABLE TALK - EDW

REPORTING CHANGE JOURNEY



The following shows the journey from **learning about BAS operational reports during Common Solution**, to working with you on **how to address additional reporting needs during Implementation Preparation**, to working with your **Community Power Users to develop evolving reporting needs post-go-live**.





Risk Management – Your Role



BAS RISK MANAGEMENT

KEY DEFINITIONS



Risk – Potential for loss, harm, or missed opportunity due to uncertainty

Issue – A risk that has been realized

Risk Statement – Concise statement using IF... THEN...



Risk/Issue Owner – Individual responsible for tracking and monitoring risk/issue

Trigger Date – Date when risk becomes an issue or date issue must be resolved to minimize further negative impacts to the project

Response Plans – Actions needed to mitigate the risk or resolve an issue

Risk Management Plan – Document with the processes, tools etc. needed to implement risk management at DOC

Risk/Issue Registers – Repository to gather and track risks and issues

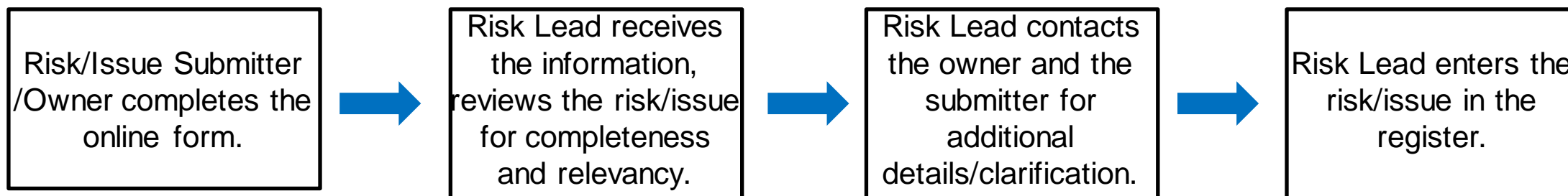


BAS RISK MANAGEMENT

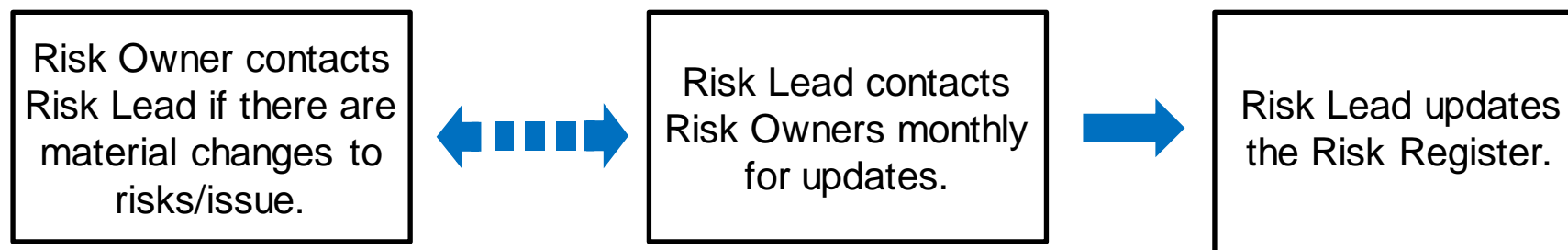
RISK SUBMISSION AND UPDATE PROCESS



Risk/Issue Submission Process



Risk/Issue Update Process



- Critical risks
- Risks with upcoming trigger dates



BAS RISK MANAGEMENT

RISK CATEGORIES



Risks are currently spread across all categories.

Risk Category	# Risks (10/23/2020)
Budget	3
Enterprise Data Warehouse	1
Functional – Core Apps	18
Integration	2
Migration (includes data conversion, testing, Go-Live)	14
Organization Change Management	9
Program Management (includes resources, schedule, scope, reporting)	23
Security	5
Technical (includes hosting, infrastructure, networking etc.)	13

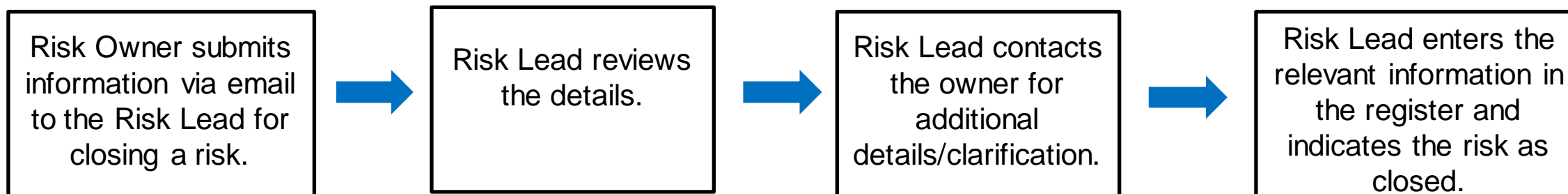


BAS RISK MANAGEMENT

RISK CLOSURE PROCESS



Risk/Issue Closure Process





BAS RISK MANAGEMENT

ROLES AND RESPONSIBILITIES



Risk Owners

Accountable for the risk and its impacts, including implementation and performance of the risk response plan

Escalates risk if existing mitigation is not effective or if decisions or additional resources etc. are needed to manage the risk

Provides updates to the risk and participates in regularly scheduled risk meetings

Risk Lead

Facilitates the risk management process, assists with identifying risks, logs the risks/issues in the register, and facilitates the risk meetings

Provides guidance and technical assistance to BAS risk owners so they have sufficient knowledge and resources to manage their risks

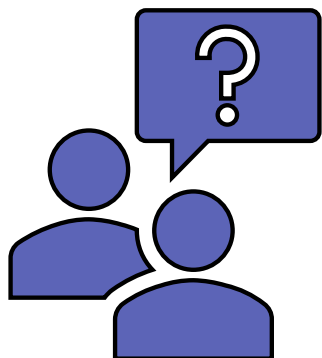
Connects stakeholders and builds support for implementing an evidence-based approach to BAS Risk Management





BAS RISK MANAGEMENT

SOME COMMONLY ASKED QUESTIONS



- Why is it important for me to submit a risk?
- Is the Risk Submitter the same as the Risk Owner?
- If I identify a Training Risk, what category would I put it in?
- What's the best way for me to find out if a risk I want to submit has already been submitted?
- If a risk turns into an issue, does it automatically move to the most serious risk in the Risk Register (red in the heat map)?



BAS RISK MANAGEMENT

RISK MANAGEMENT ON THE BAS WEBSITE



<https://www.commerce.gov/ofm/bas-homepage/business-applications-solution-bas>



The screenshot shows the homepage of the Business Applications Solution (BAS) program. At the top, there is a header with the Department of Commerce seal, the text "Office of Financial Management", and a search bar. Below the header is a navigation menu with links: ABOUT OFM, OFFICES, BAS HOMEPAGE, PUBLICATIONS, PAYMENT INTEGRITY, and FEEDBACK. The main content area features a sidebar on the left with a list of links: Overview, About Us, Announcements, News, Events, BAS Program Endorsements, Questions About BAS, Tools and Resources, BAS YouTube Channel, Risk Management, and Contact Us. The "Risk Management" link is highlighted with a red dashed border. The main content area displays the title "Business Applications Solution (BAS)" and a welcome message: "Welcome to the BAS Program!". Below this, there is a paragraph describing the BAS program as a U.S. Department of Commerce (DOC) modernization initiative to deploy an integrated suite of financial and business management applications in support of our mission. Another paragraph states that the Secretary of Commerce identified BAS as one of the top Departmental priorities, with objectives including implementing and integrating a suite of commercial off-the-shelf (COTS) business systems, enterprise data warehouse (EDW) and business intelligence (BI) reporting solution, and system interfaces in a hosted environment. The BAS Program will continue the ongoing emphasis on achieving organizational excellence and outstanding customer service for the Department.

Because this is an open website, you may be asked to sign in for security purposes.



BAS PROGRAM TABLE TALK

NEXT EVENT



Town Hall -

- **Program Status Update**
- **January 25, 2021 (NOAA and NIST)**
- **January 26, 2021 (Census and HCHB)**



BAS PROGRAM – TABLE TALK

HAVE A QUESTION ABOUT THE BAS PROGRAM?



Several ways to get your question answered:

- Use the chat window for this event.
- Type your question in the Menti.com survey – last question.
- ***NEW*** Use the “Submit a BAS Question” feature in the “[Questions about BAS](#)” section of the website.



BAS PROGRAM UPDATE

WE NEED YOUR INPUT



We'd like your input using Menti.com (authorized by DOC for use at these events).

- **Sign in using your computer, phone, or other electronic device.**
www.menti.com
- **Enter the passcode when prompted.**
82 87 51 7 (NOAA and NIST)
25 58 76 9 (Census and HCHB)
- **Answer the question that appears – all responses are anonymous.**