



BUSINESS APPLICATIONS SOLUTION (BAS) PROGRAM CENSUS TABLE TALK

UNITED STATES DEPARTMENT OF COMMERCE, OFFICE OF FINANCIAL MANAGEMENT





BAS PROGRAM: CENSUS TABLE TALK AGENDA

- BAS Overview
- BAS Solution Set
- BAS Implementation Schedule
- Global Design Approach
- Global Design Workshop Schedules
- Integration Approach
- Opportunities to Get Involved
- Q & A

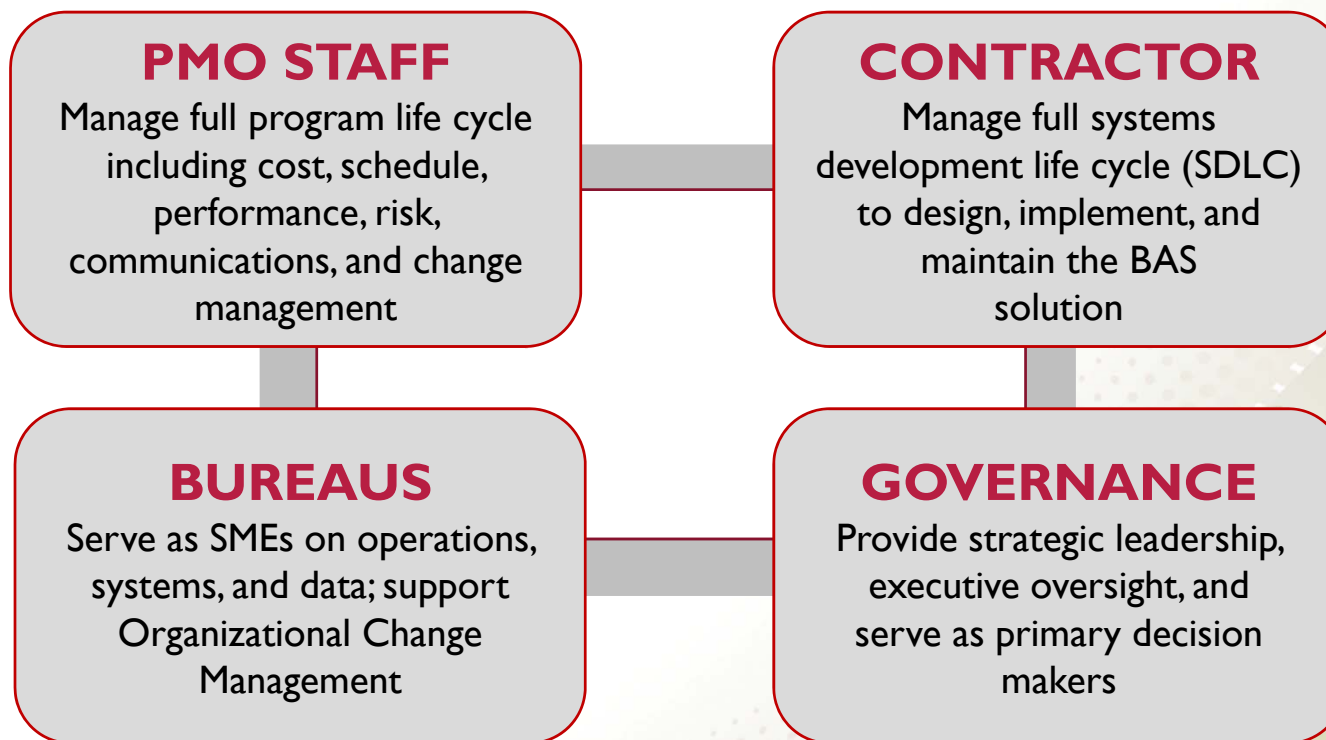


BAS PROGRAM: WHAT IS BAS?

- Implementation and **integration of a suite of commercial off-the-shelf (COTS) business systems, enterprise data warehouse (EDW) and business intelligence (BI) reporting solution, and system interfaces in a hosted environment.**
- **Goals:**
 - Single Instance, Single Configuration of Essential Mission Support Systems
 - Enterprise wide, standard data warehouse
 - Modernized Financial, Procurement, and Asset Management Systems
 - Modernized Data Platform



BAS PROGRAM: WHO IS INVOLVED?





BAS PROGRAM: SOLUTION SET

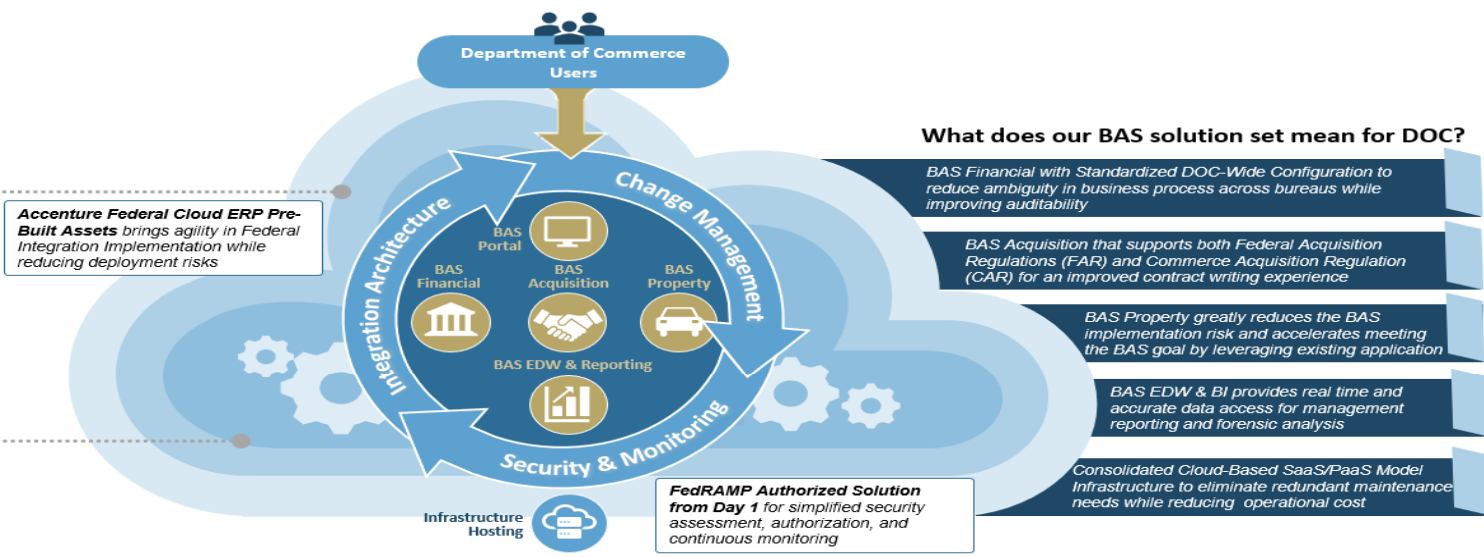
Integrated Business Application Solution (BAS) Overview

Federal Integration Accenture Assets

- Treasury Payments (IPAC, PAM, DoNotPay)
- Credit Cards (Citibank Purchase, Travel, Fleet)
- Payroll (NFC)
- Treasury Reporting (GTAS, CTA, FedDebt)
- ETS2 Travel (Carlson Wagonlit)
- Award (SAM, FPDS, FBO FedConnect)

DOC Integration

- Property (GSAXcess, Fleet Fuel Purchase, HR AutoDiscovery)
- Grant (Grants Online, GMIS)
- Bureau Specific Feeder Systems (NOAA, NIST, Census)



BAS Portal

Application Links	Widgets
Knowledge Base	
Helpdesk Service Requests	

BAS Financial

Acquire to Dispose	Order to Cash
Procure to Pay	
Plan to Report	

BAS Acquisition

Pre-Award
Award
Post-Award

BAS Property

Personal Property
Real Property
Fleet Management

BAS EDW

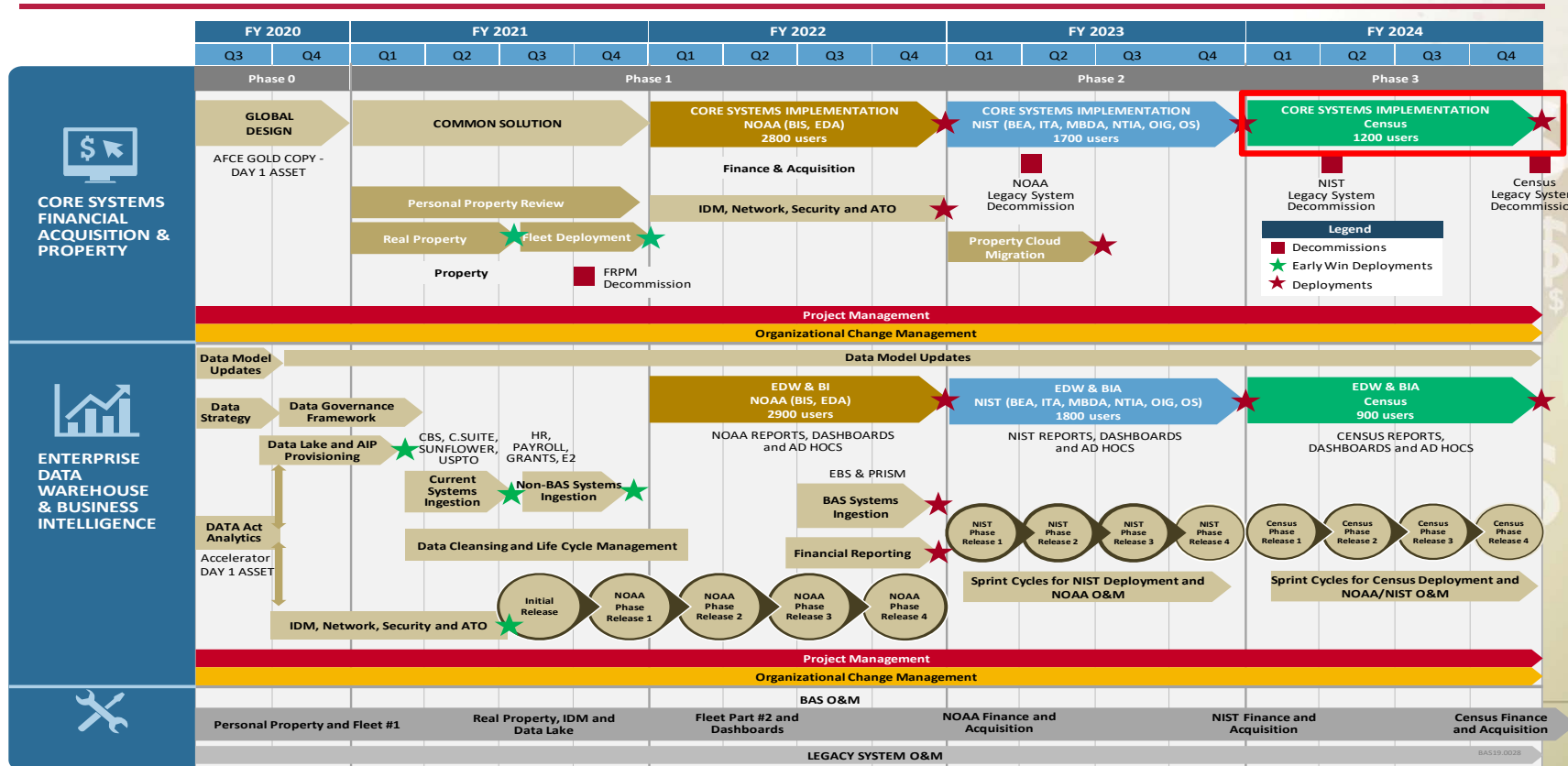
Reporting Analytics	Data Lake Data Science
Business Intelligence Enterprise Data Warehouse	
DATA Act Analytics	

Infrastructure Hosting

Unison SaaS	ServiceNow SaaS
Accenture Federal Cloud ERP SaaS	
Accenture Insights Platform PaaS	

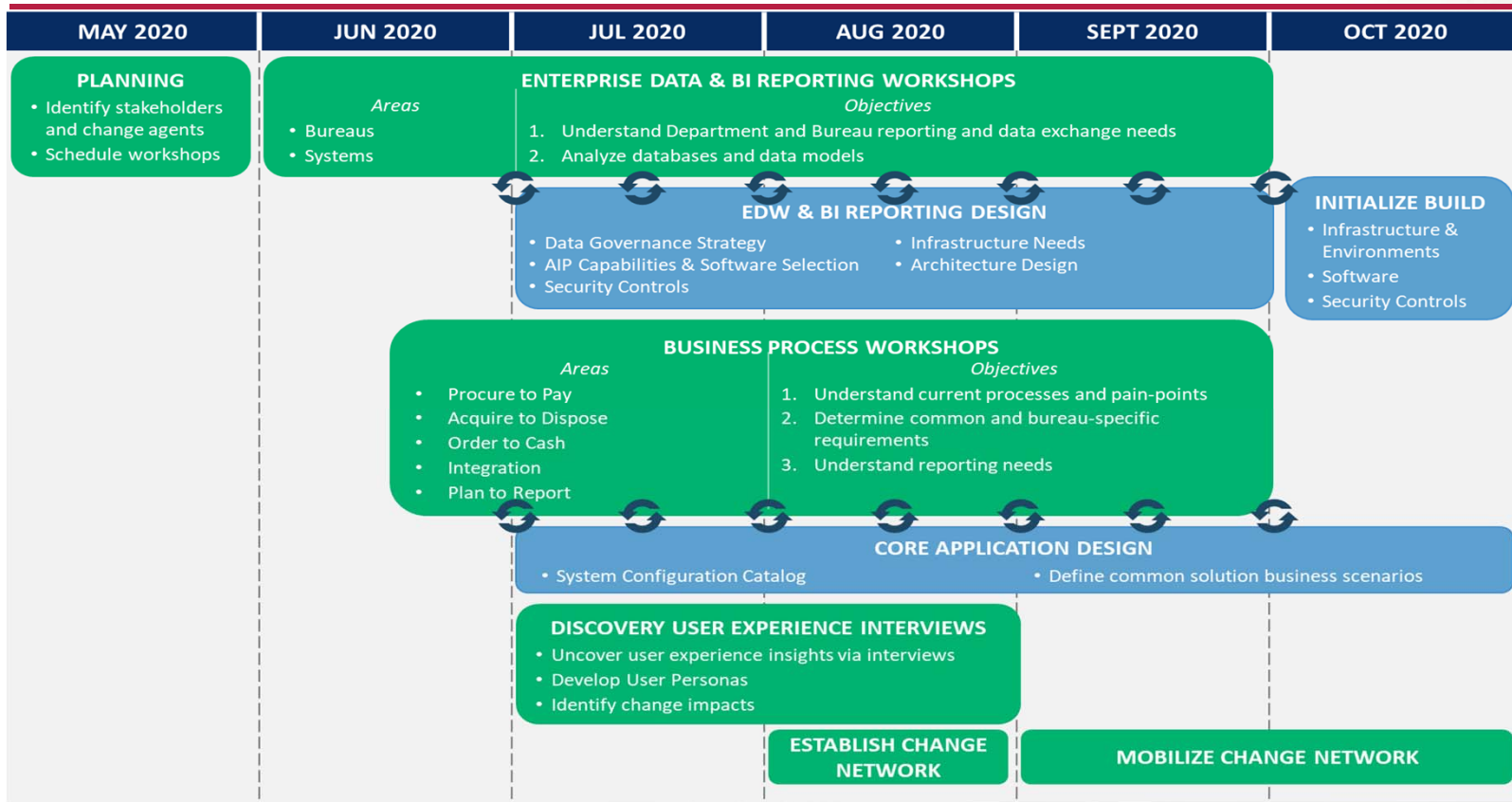


BAS PROGRAM: IMPLEMENTATION SCHEDULE





BAS PROGRAM: GLOBAL DESIGN APPROACH



DOC Stakeholder engagement

Dev Team Actions



BAS PROGRAM: ENTERPRISE DATA WAREHOUSE (EDW) & BI REPORTING WORKSHOP SCHEDULE

CURRENT TIMELINE	Census End User and Source System Solutions
<p>JUNE and JULY ----- Workshops with end users from each Dept/Bureau to understand reporting needs, gaps/pain points</p>	<p style="text-align: center;">Census June 25</p> <p style="text-align: center;">Follow-up sessions planned to gather additional information during the period</p>

CURRENT TIMELINE	Activity
AUGUST	Finalize focus sessions
	Requirements analysis and prepare capability demos
SEPTEMBER	Architecture, Interface and Application design
	Capability Demos



BAS PROGRAM: GLOBAL DESIGN BUSINESS PROCESS WORKSHOP SCHEDULE

WORKSHOP #	DATE	PROCESS AREA	MODULES
1	16-Jun	Procure to Pay	PRISM
2	26-Jun	Procure to Pay	PRISM
3	7-Jul	Procure to Pay	Oracle: Purchasing, Payables, Payments
4	14-Jul	Procure to Pay	Oracle EBS: Projects, Project Costing
5	21-Jul	Acquire to Dispose	Sunflower
6	28-Jul	Acquire to Dispose	Sunflower
7	4-Aug	Order to Cash	Oracle EBS: Project Billing, Receivables
8	11-Aug	Plan to Report	Oracle EBS: General Ledger
9	18-Aug	Plan to Report	Oracle EBS: Federal Administrator
10	25-Aug	Plan to Report	Oracle EBS: Federal Administrator

Census representatives will participate in all sessions based on workshop objective



BAS PROGRAM: INTEGRATION APPROACH

- Agile iterative process
- Leverage delivered capabilities
- Focus on business needs
- Transform instead of replicate

As-Is CBS and Other System Integration	To-Be BAS Integration
Custom System Architecture	Standard Enterprise Architecture
In-House development model <ul style="list-style-type: none">• Longer time to delivery• High cost of maintenance	Managed service model <ul style="list-style-type: none">• Shorter time to delivery• Low cost of maintenance



BAS PROGRAM: INTEGRATION ALIGNMENT TO IMPLEMENTATION PHASES

➤ **Common Solution Phase**

➤ **Common Federal Integrations**

- Utilize module configuration and standard framework
- Focus on Federal external systems

➤ **Common DOC Integrations**

- Utilize standard framework and integration accelerators
- Focus on DOC internal systems

➤ **NOAA, NIST, and Census Implementation Phases - Bureau Specific Integrations**

- Utilize standard framework and extension as needed
- Focus on Bureau specific systems



BAS PROGRAM: HOW TO GET INVOLVED

➤ **Questions/Concerns/Feedback? Want to be involved?**

Contact BAS Project:

- BASProject@doc.gov

➤ **Need more information? Visit us online at:**

- <https://www.commerce.gov/ofm/bas-homepage/business-applications-solution-bas>



BAS PROGRAM: CENSUS ENGAGEMENT EVENTS

Global Design and Common Solution Events

EVENT	PURPOSE	TIMEFRAME	AUDIENCE
EDW Workshops	Determine data and reporting capabilities needed for the enterprise data warehouse	June – August 2020 Census – June 25 follow-ups planned	Census reps based on workshop objective
Business Process Workshops	Decision making around new enterprise standard business processes and applications for Financial, Acquisitions, and Property management	June – August 2020	Census reps based on workshop objective
EVENT	PURPOSE	FREQUENCY	AUDIENCE
Census Town Halls	Program introduction, Program status updates First Census Town Hall – August 6, 2020	1.5 hours - Every 4 months	Open to all Census staff
Census Table Talks	Topic specific	1 hour - Every 5-6 weeks	Open to all Census staff



BAS PROGRAM: FUTURE CENSUS TABLE TALK TOPICS

➤ **Organizational Change Management - August**

- **Communications**
- **Training**
- **Business process re-engineering**

➤ **IT focus – October**

- **Security**
- **SaaS solution**
- **Future hosting platform**



BAS PROGRAM: WHAT QUESTIONS DO YOU HAVE?





BAS PROGRAM: WE NEED YOUR INPUT

- **Go to**

www.menti.com
- **Enter the passcode**
29 89 29
- **Will take only a few minutes to provide valuable feedback to us**
- **All responses are anonymous**