



232 EXCLUSION PORTAL: Public Data Extract Guide

TABLE OF CONTENTS

Extracting Data From the 232 Exclusions Portal	2
Step 1: Download the Data.....	2
Step 2: Load Data into Excel	2
Step 3: Handling Data larger than Excel's Row Limit	7
Step 4: Refreshing the Data.....	11

EXTRACTING DATA FROM THE 232 EXCLUSIONS PORTAL

The following instructions explain how to import the data from the 232 Exclusions Portal into Excel.

These instructions replace previous guidance in the 232 Exclusions Portal guide. The instructions below outline how to extract data from the Portal. Note: Additional methods may be used, this is just a starting point for all parties.

STEP 1: DOWNLOAD THE DATA

1a. Navigate to <https://232app.azurewebsites.net/data/BIS232Data.zip>. This will prompt a .zip file to download.

1b. Once downloaded, extract the contents of the .zip file by right-clicking on the file and selecting 'Extract'. This should be a number of .txt files. Save these file on your computer.

STEP 2: LOAD DATA INTO EXCEL

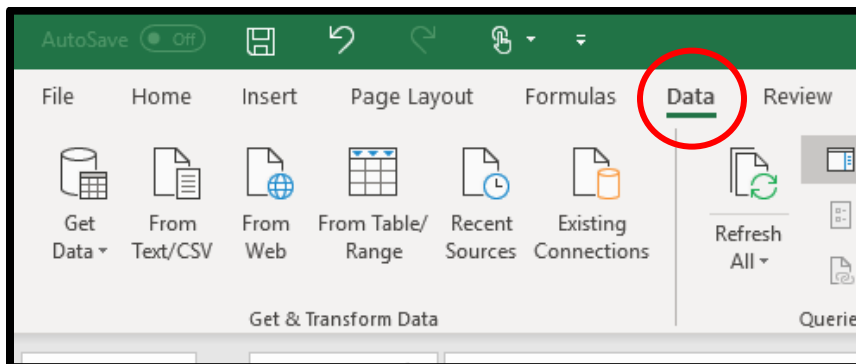
Note: this method should be utilized for the following .txt files:

ERProductStandards	ERSourceCountries	ERToughnessJoules	ERToughnessShear
ERToughnessTemperature		ExclusionRequests	ObjectionFilings
ObjectionRebuttals	OFProductStrength	OFReasonForObjection_ManufacturingLocations	
OFReasonForObjection_ProductionLocations		OFReasonForObjection_ProductionSubstituteLocations	
OFReasonForObjection_SubstituteLocations		OFToughnessJoules	OFToughnessShear
OFToughnessTemperature	Surrebuttals		

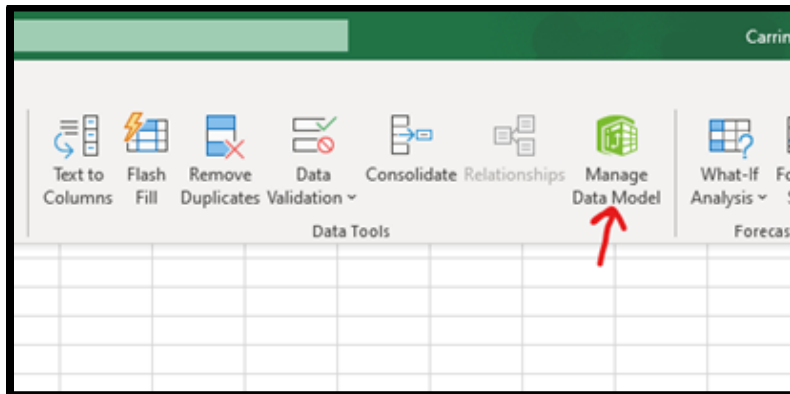
To extract data from the remaining files, please proceed to Step 3.

2a. Open Excel.

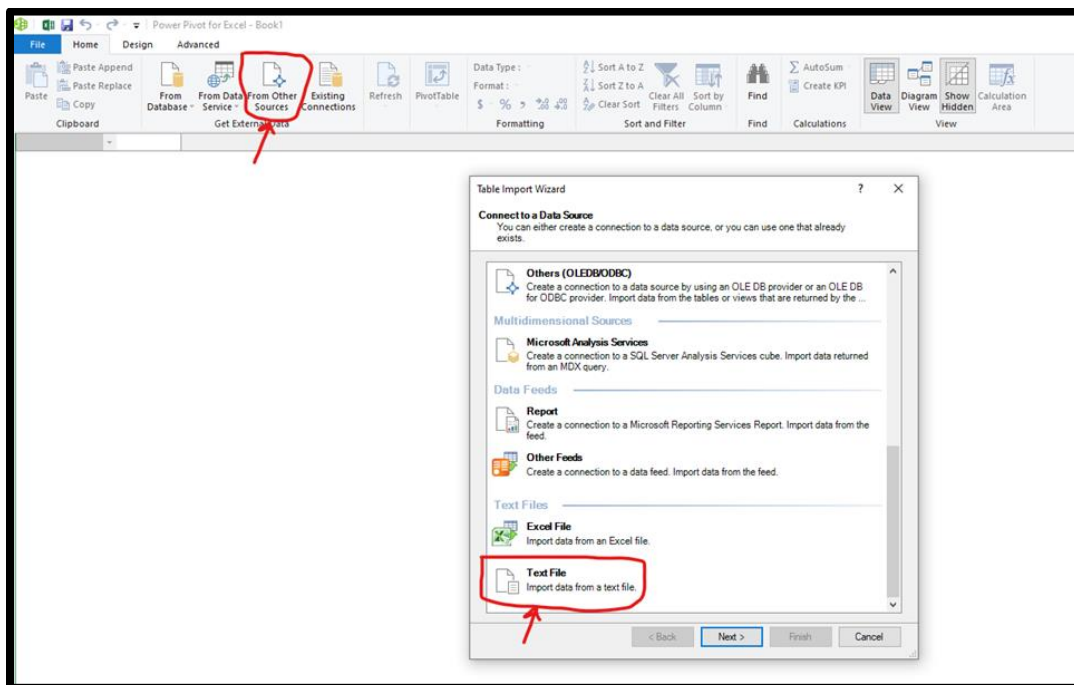
2b. Select the 'Data' tab.



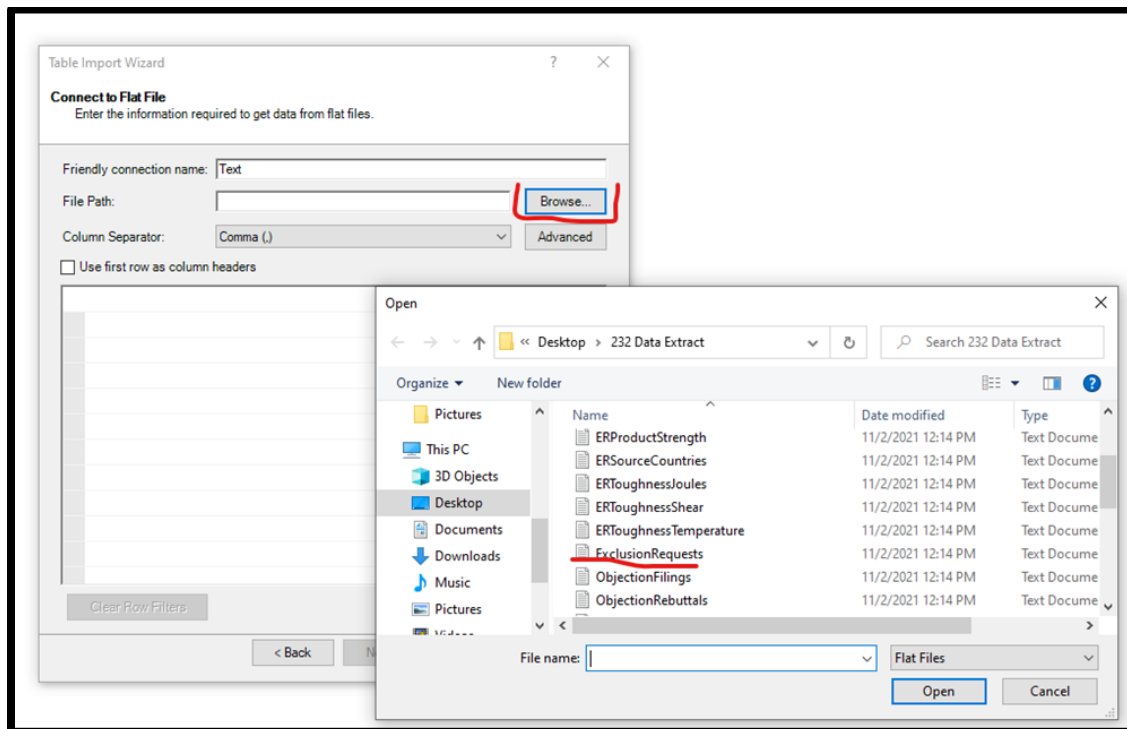
2c. Select 'Manage Data Model'. For first time users, you'll have to select "OK" on the Confirmation pop-up.



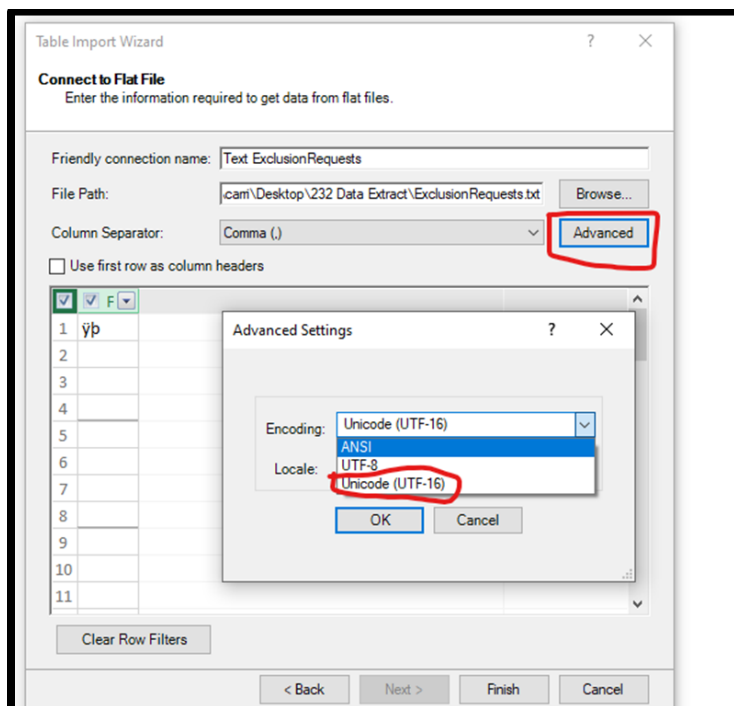
2d. Click on "From Other Sources" and then from the pop-up, scroll down to select "Text File", and then "Next".



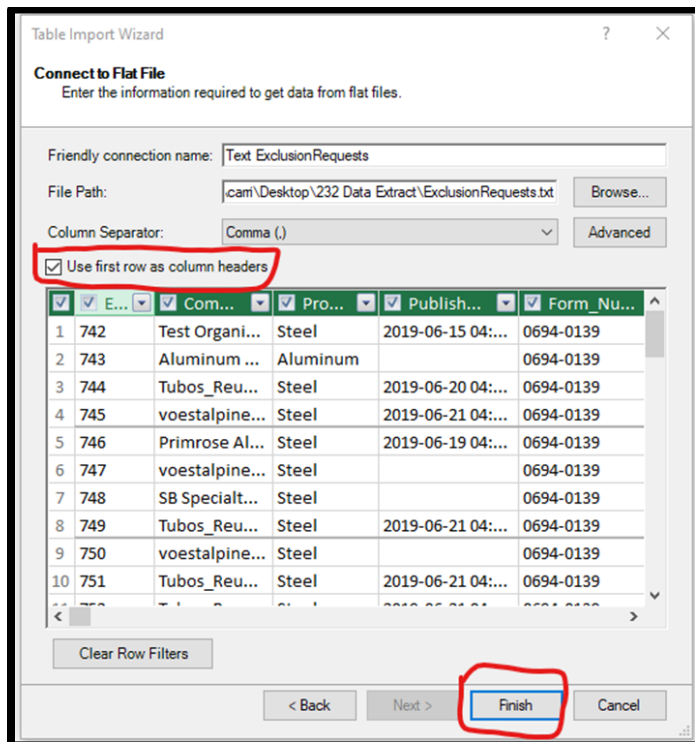
2e. Click on the “Browse” button and navigate to the folder where you extracted the files. Then select the “ExclusionRequests” file and hit “Open”.



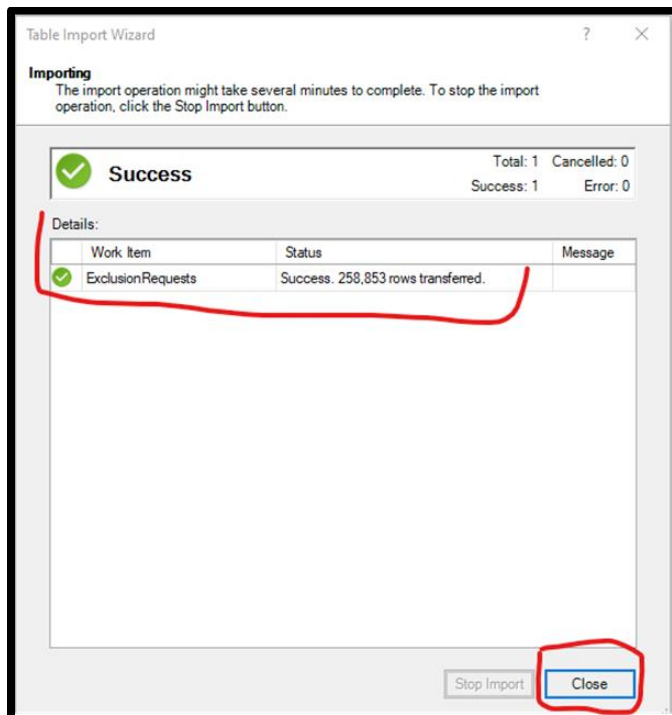
2f. Click on the “Advanced” button and then select “Unicode (UTF-16)” for the “Encoding” and then click on “OK”.



2g. Check the “Use First row as column headers” box, and after the data loads, click on the “Finish” button.

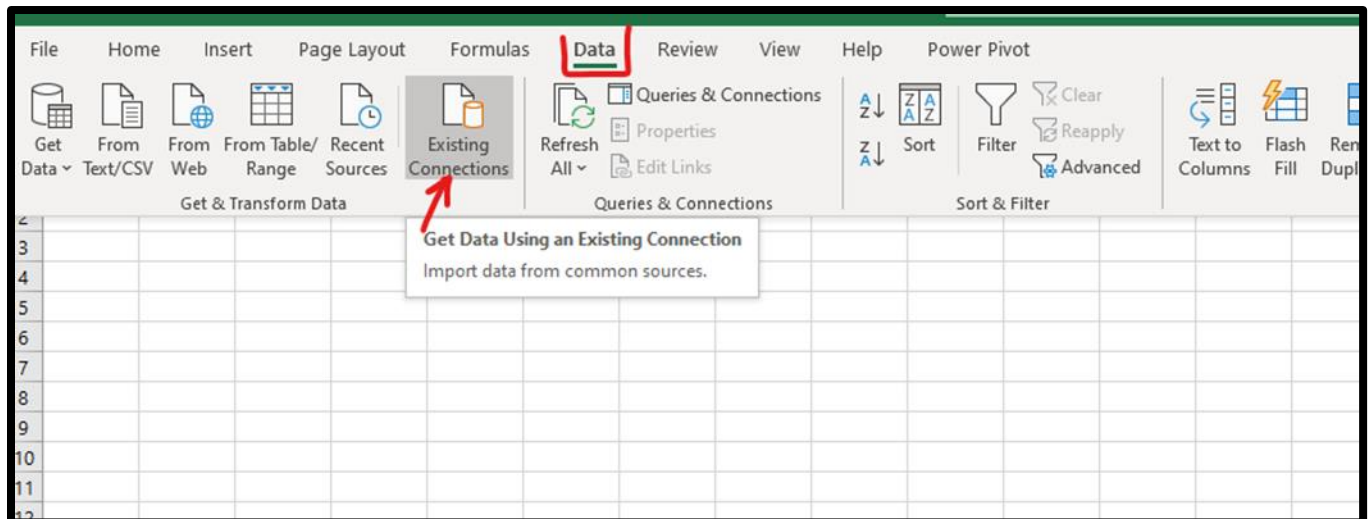


2f. Once the data successfully loads click on the “Close” button.

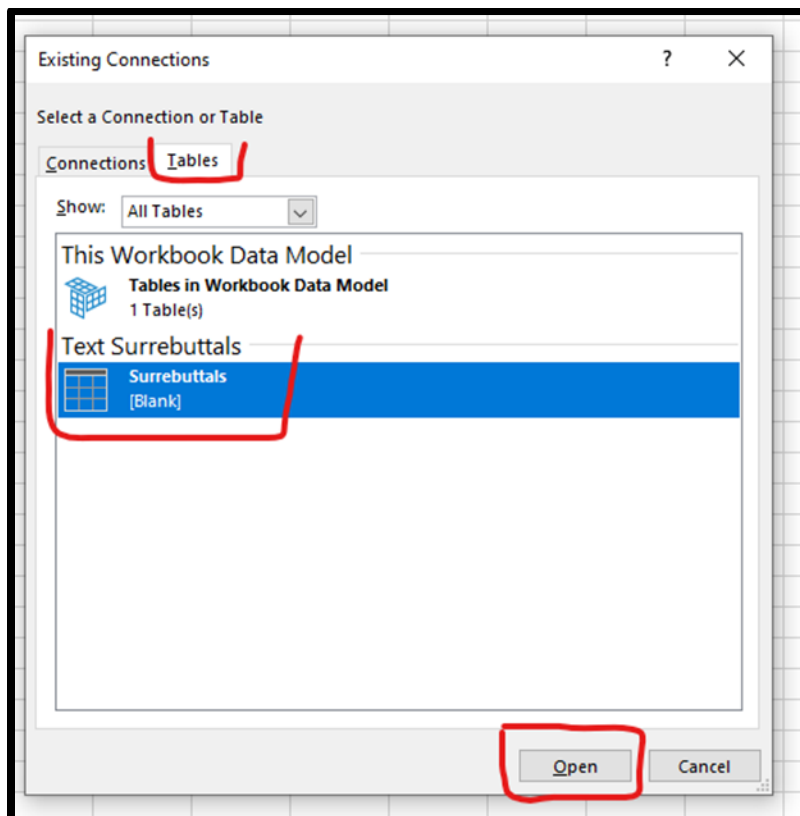


2g. Save the file at a specific location on your PC. Note that the Excel worksheet will seem blank.

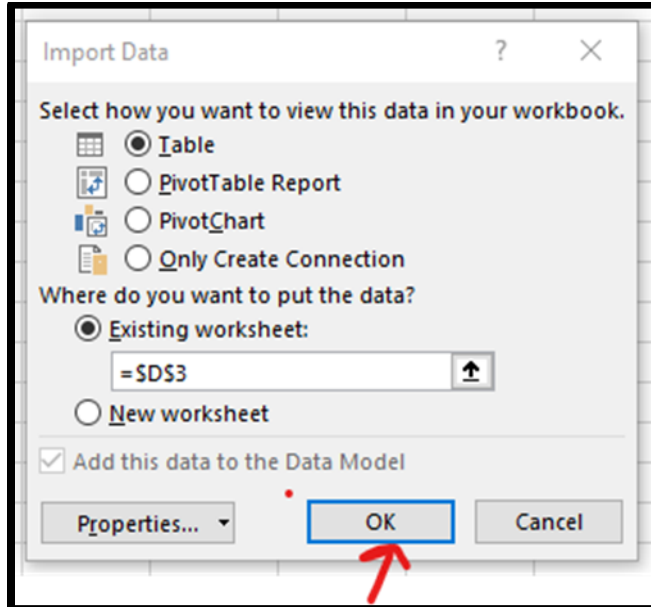
2h. Click on “Data” and then click on “Existing Connections” on the blank worksheet or locate the copy you saved on your PC



2i. On the pop-up, click on “Tables”, then select the file you saved and click on the “Open” button.



2j. On the Import data pop-up, click on the “OK” button.



2k. Click on the “Save” button.

The data has now been loaded into Excel. This contains most of the data from the Exclusion Request form. This process can be repeated for any above the above noted .txt files from the BIS232Data folder.

Please note some of these files contain more rows than can be loaded into Excel directly.

For additional information on manipulating these files, please see Step 3.

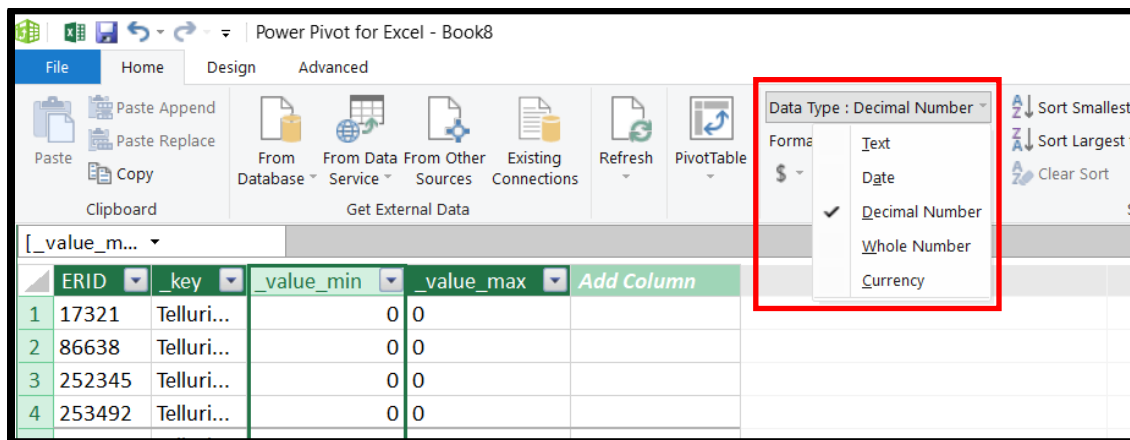
STEP 3: HANDLING DATA LARGER THAN EXCEL’S ROW LIMIT

Note: this method should be utilized for the following .txt files:

ERChemicalComposition	ERProductClassification	ERProductDimensions
ERProductProcessing_Processes	ERProductProcessing_ProcessesPercentage	
ERProductStrength	OFChemicalComposition	OFProductDimensions
OFProductProcessing_Processes	OFProductProcessing_ProcessesPercentage	

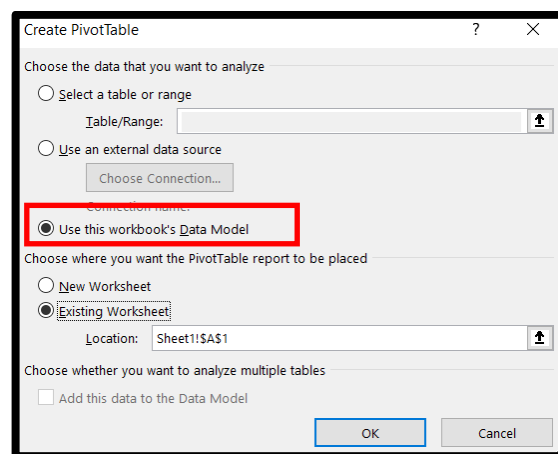
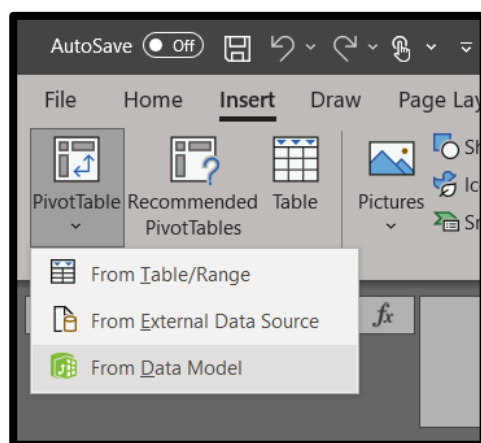
3a. Repeat Steps 2a. through 2f. above with your chosen data source (.txt file).

3b. Once the data has loaded into the PowerPivot Screen, select the “Value” column (or Value Min or Value Max depending on the source), then under the “Data Type” change it from “Text” to “Decimal Number”. If you’re working with the ERProductClassification.txt data, this step should be skipped.



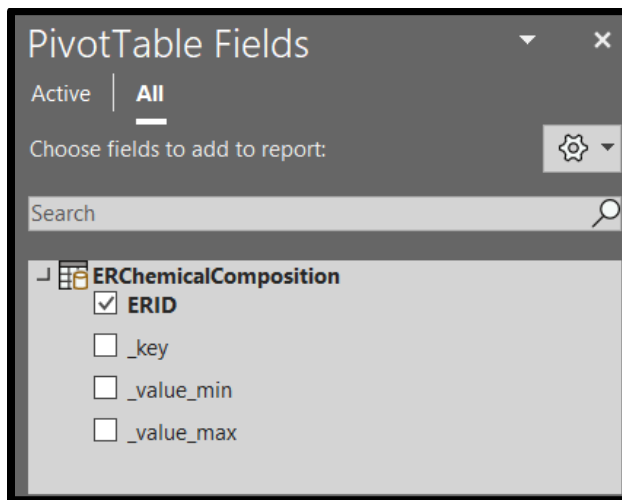
3c. Save the file at a specific location on your PC. Note that the Excel worksheet will seem blank.

3d. Under the “Insert” tab in the Ribbon, either select the drop down under “PivotTable” and then “From Data Model” or, click the PivotTable button and then in the dialogue box select “Use this workbook’s Data Model” depending on the version of Excel you have.

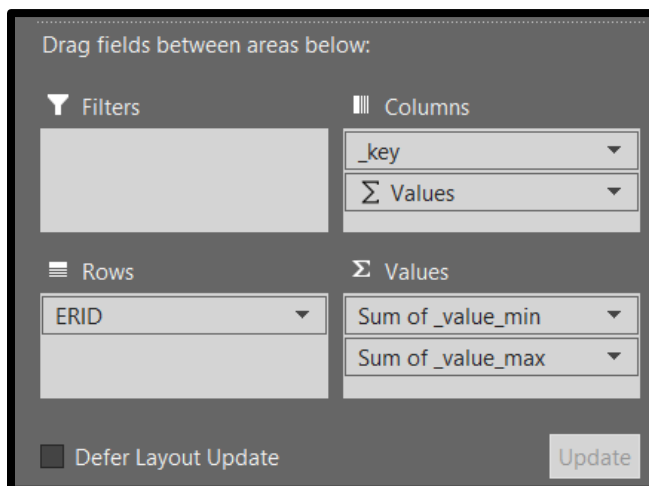


3e. In the dialogue box that pops up, click “Ok”

3f. In the PivotTable Fields Menu, expand the table to reveal the fields

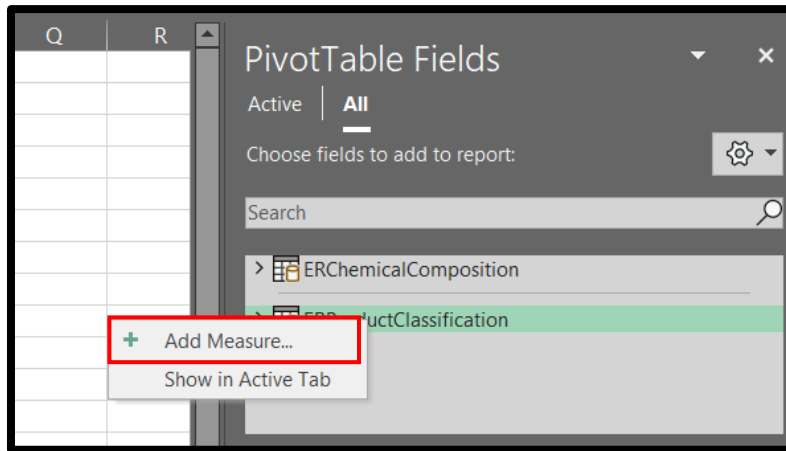


3g. Drag the ERID field into the “Rows” well, the “key” field into the “Columns” well, and the “value” field(s) into the “Values” well. If you’re working with the ERProductClassification.txt data, skip to step 3i. Note, this may move quicker if you filter for a specific ID or set of IDs prior to dragging the “value” field(s) into the “Values” well.



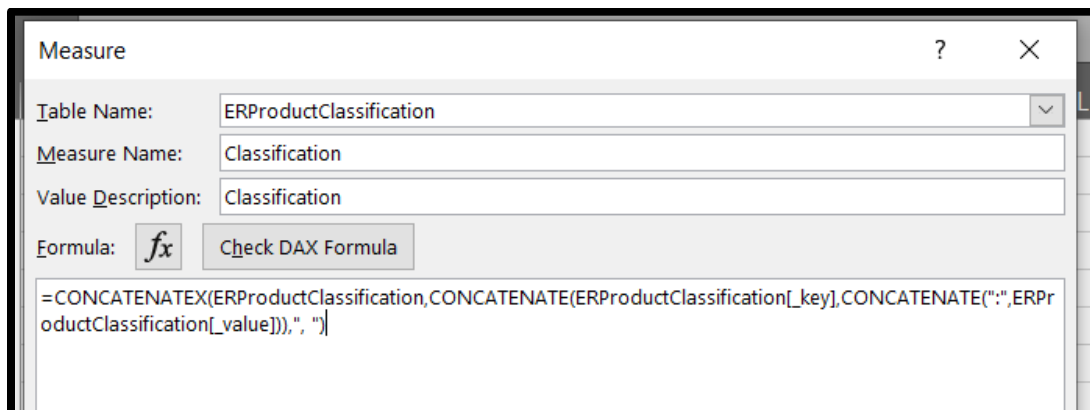
3h. Click save. The data has now been loaded into Excel.

3i. For the ER Product Classification.txt data, right click on “ERProductClassification” within the PivotTable Fields menu and select “Add Measure”



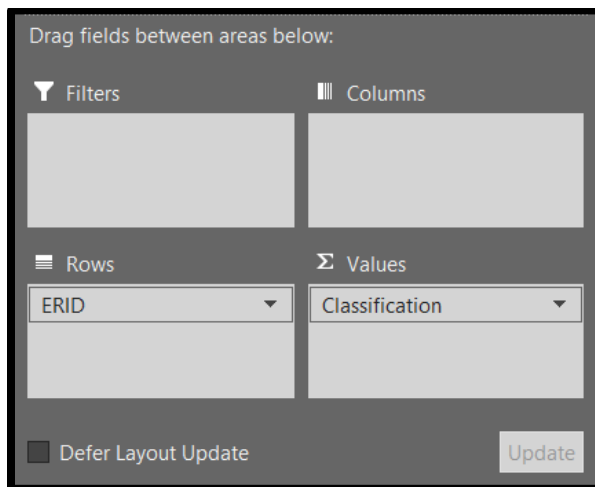
3j. In the dialogue box that pops up, enter “Classification” for the Measure Name and Value Description, and then paste the following formula into the Formula box:

```
=CONCATENATEX(ERProductClassification,CONCATENATE(ERProductClassification[_key],  
CONCATENATE(":",ERProductClassification[_value])),",")
```



3k. Select “Ok”

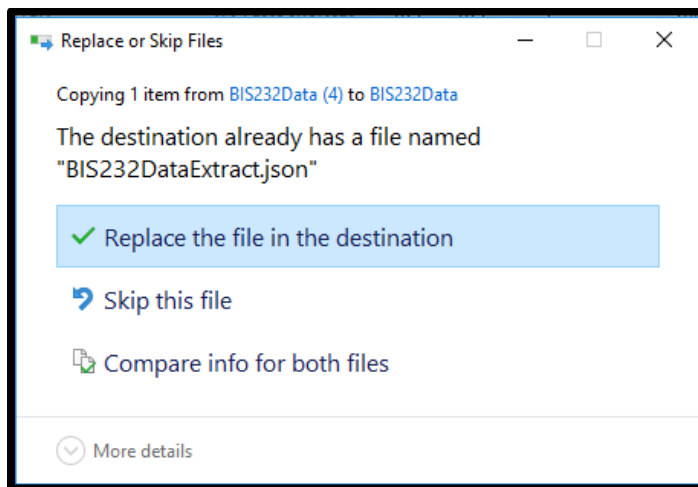
3l. In the PivotTable Fields, drag the ID field to the “Rows” well and the new Classification measure to the “Values” well. Note: this may move quicker if you filter to a specific ID or set of IDs prior to dragging the measure to the “Values” well.



3m. Click “Save”. All the product classifications will now be in a single cell for each ID.

STEP 4: REFRESHING THE DATA

4a. Repeat Step 1, saving the new .txt files in the same location and under the same name as the original file. If prompted to replace existing file, click ‘Replace the file in the destination’.



4b. Under the Data tab, click 'Refresh All'. This will update your Data.

